



9 Elm Green, Hailsham

Hailsham

£240,000



## 9 Elm Green

Hailsham, Hailsham

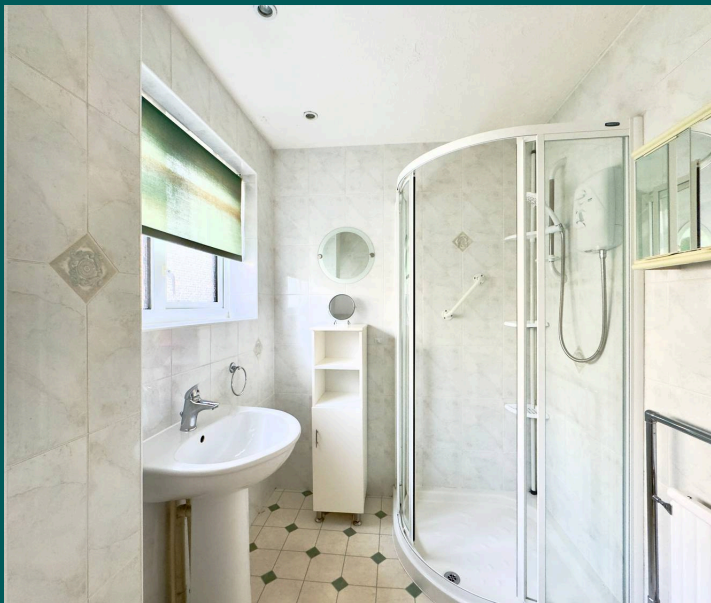
Set within the highly regarded Harmers Hay development at Elm Green, Hailsham, this well-presented semi-detached bungalow offers an ideal blend of comfort, practicality, and convenience. Council Tax band: C

Tenure: Freehold

EPC Energy Efficiency Rating: C

EPC Environmental Impact Rating: D

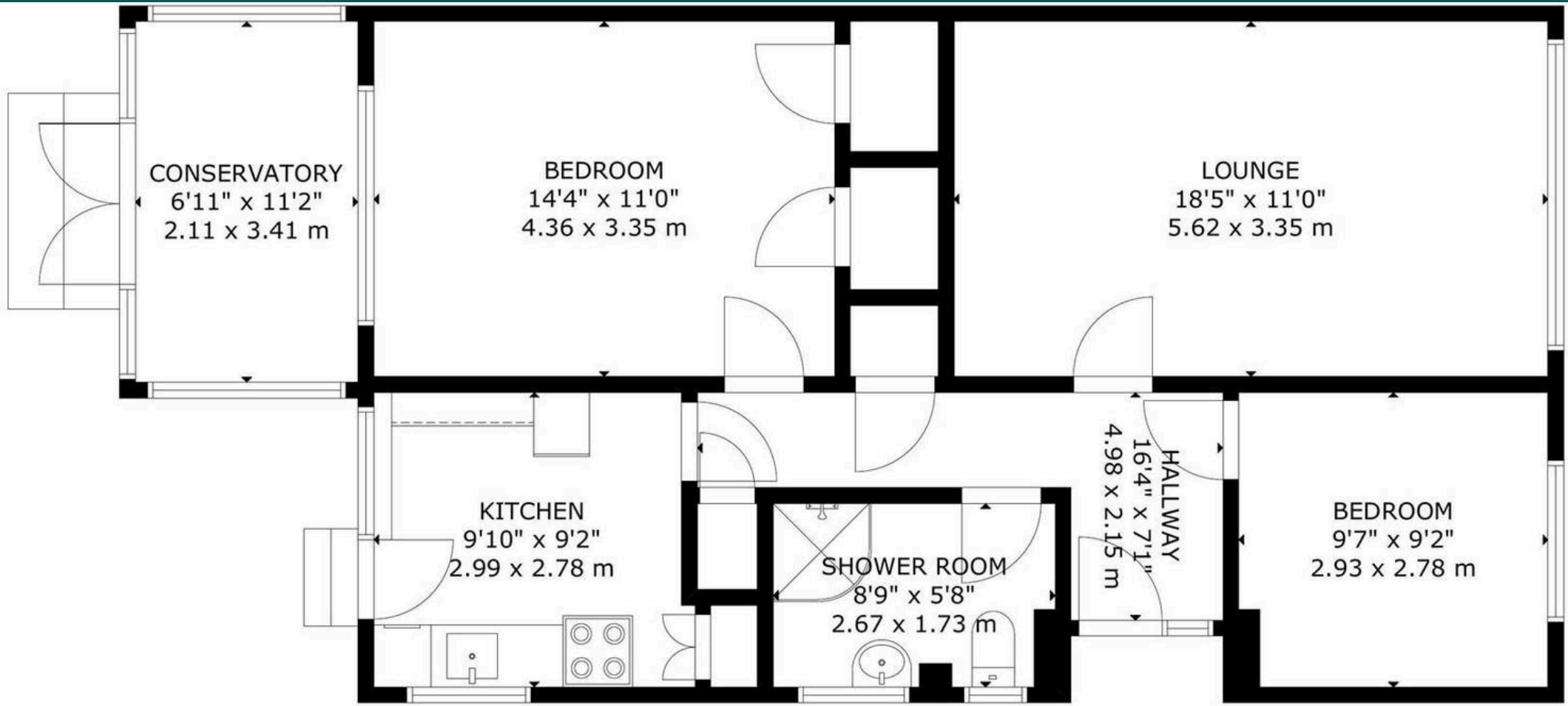
- Well-presented semi-detached bungalow within the popular Harmers Hay development
- Two spacious double bedrooms
- Bright and generously sized living room
- Low-maintenance private rear garden
- Off-road parking for one vehicle
- Chain-free sale and within walking distance of Hailsham town centre



Set within the highly regarded Harmers Hay development at Elm Green, Hailsham, this well-presented semi-detached bungalow offers an ideal blend of comfort, practicality, and convenience. The accommodation comprises two generous double bedrooms and a bright, well-proportioned living room, creating a welcoming space suitable for both relaxation and entertaining. Externally, the property benefits from a private, low-maintenance rear garden, perfectly suited to those seeking an easy-care outdoor area for enjoying warmer months. Off-road parking for one vehicle adds further convenience for both residents and guests. Offered to the market chain free, the bungalow allows for a straightforward and efficient purchase. Its location is a particular advantage, with the town centre, shops, and local amenities all within comfortable walking distance. Well suited to first-time buyers, downsizers, or those seeking a quiet yet well-connected home, this attractive property represents an excellent opportunity in a popular residential setting.







GROSS INTERNAL AREA  
TOTAL: 76 m<sup>2</sup>/823 sq.ft  
FLOOR 1: 76 m<sup>2</sup>/823 sq.ft

SIZE AND DIMENSIONS ARE APPROXIMATE, ACTUAL MAY VARY



## Charles Century Estate Agents

Unit 1 The Quintins North Street, Hailsham - BN27 1DP

01323302226 • [hailsham@charlescentury.co.uk](mailto:hailsham@charlescentury.co.uk) • [charlescentury.co.uk/](http://charlescentury.co.uk/)

CHARLES  
CENTURY  
ESTATE AGENTS