



Fursecroft

Brown Street, Marylebone, W1H 5LG

£1,400 Per Week

This is an extremely spacious four double bedroomed apartment located on the ninth floor (with lifts) of a popular portered mansion building close to Marble Arch and the world renowned Hyde Park. Also, Oxford street, Paddington station and Baker Street are within easy walking distance away. This property has been neutrally decorated throughout and comprises of:- Welcoming entrance hallway, Guest WC, bright large reception/dining room with fantastic views over the city and real dark oak flooring, two good sized double bedrooms and two further bedrooms, one bathroom/WC and one shower/WC. Large separate fitted kitchen and door to refuse depository area and Fire escape. The flat also benefits from having a communal heating/HW with ample storage, 24 hour porter and lifts access. The property is offered furnished and will be available from mid August - Highly suitable for 4 sharers and or family rental.

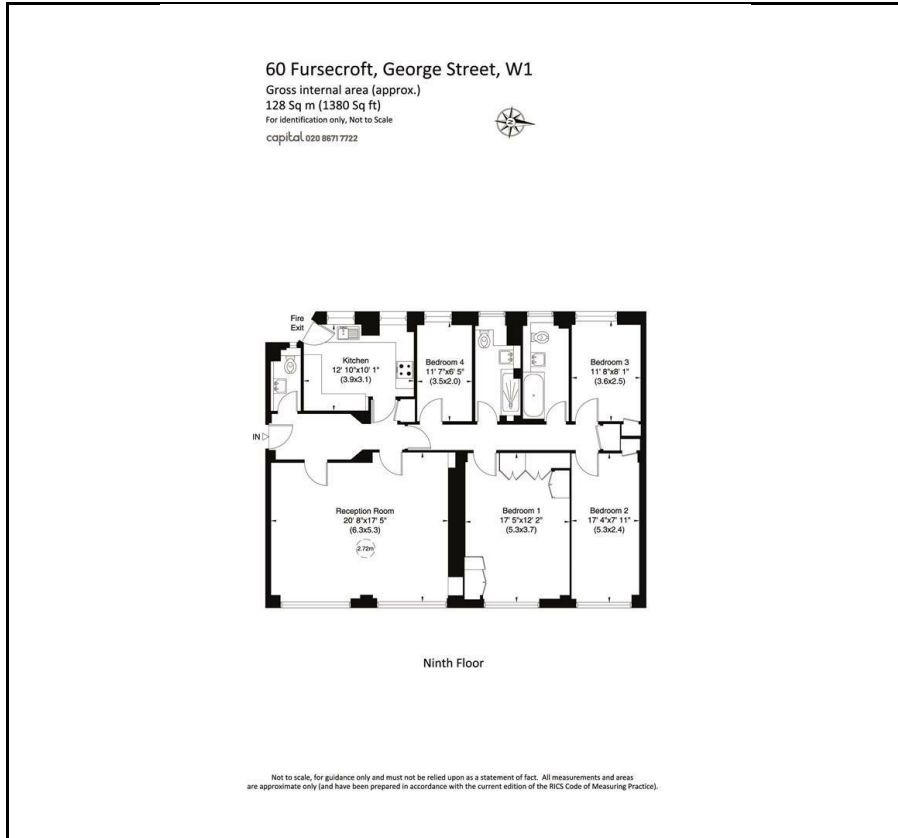
- Four Bedrooms
- Ninth Floor
- 24 Hour Porter
- Close to Marble Arch
- Wooden Flooring

Viewing

Please contact our Messila Residential Office on 020 7586 6699 if you wish to arrange a viewing appointment for this property or require further information.



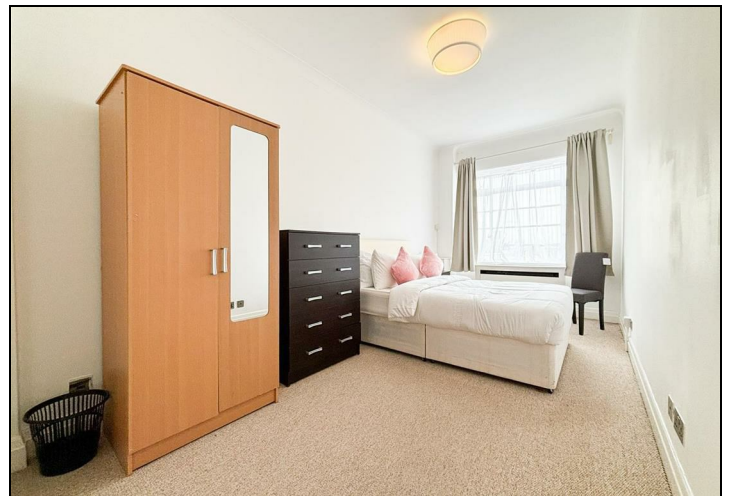
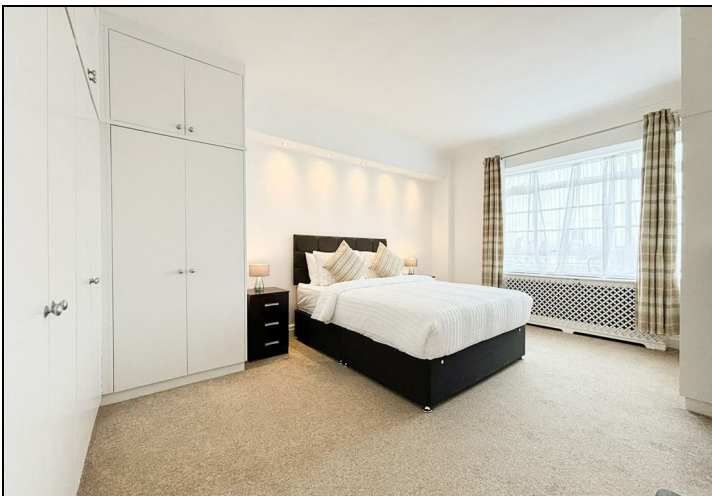
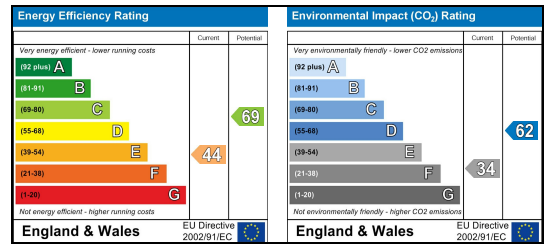
Floor Plan



Area Map



Energy Efficiency Graph



These particulars, whilst believed to be accurate are set out as a general outline only for guidance and do not constitute any part of an offer or contract. Intending purchasers should not rely on them as statements of representation of fact, but must satisfy themselves by inspection or otherwise as to their accuracy. No person in this firm's employment has the authority to make or give any representation or warranty in respect of the property.

Messila Residential

137 Park Road, London, NW8 7HT

T: 020 7586 6699 E: regentspark@messilaresidential.com W: messilaresidential.com