



Martlet Road, Minehead, TA24 5QE

welcome to

Northleigh, Martlet Road, Minehead

Located within the popular North Hill area of Minehead just below the historic war memorial is Northleigh, a welcoming three bedroom period home offering the perfect base for exploring the stunning Somerset coast and the nearby Exmoor National Park. NO ONWARD CHAIN



Front Door

Leading to

Entrance Hall

With exposed floorboards, radiator, staircase rising to first floor landing with built in understairs cupboard, open plan to study area, doors to

Study Area

6' 11" x 6' 5" (2.11m x 1.96m)

Window to rear, quarry tiled flooring.

Cloakroom

Window to rear, low level WC, wash hand basin, laminate flooring.

Sitting Room

14' 3" max x 13' max (4.34m max x 3.96m max)

Double glazed window to front, exposed floorboards, feature fireplace, radiator, telephone point, wall light points.

Kitchen

11' 3" x 9' 9" (3.43m x 2.97m)

Double glazed window to side, a range of fitted base and wall units, worktop surfaces, inset sink unit, space and plumbing for washing machine, integrated oven, inset hob with cooker hood over, space for fridge freezer, tiled flooring, breakfast bar, wall mounted gas fired boiler serving the domestic hot water and central heating systems, radiator, door to

Breakfast Room

12' 7" max x 10' 10" max (3.84m max x 3.30m max)

Double glazed door to side, tiled flooring, double glazed door to enclosed courtyard, inset ceiling spotlights, lantern light window.

First Floor Landing

Windows to front and rear, exposed floorboards, radiator, staircase rising to second floor landing with built in understairs cupboard, doors to

Bedroom One

14' 8" max x 13' 4" max (4.47m max x 4.06m max)

Double glazed windows to front and side, fitted carpet, radiator, picture rail, period fireplace.

Separate W.C.

Window to side, vinyl flooring, radiator, low level WC.

Bathroom

Window to side, a fitted suite comprising panelled bath with shower unit over and fitted shower screen, vanity wash hand basin with cupboard under, radiator, part tiled surrounds, vinyl flooring.

Second Floor Landing

Double glazed window to rear, fitted carpet, doors to

Bedroom Two

14' 7" max x 13' 4" max (4.45m max x 4.06m max)

Double glazed window to front, fitted carpet, radiator, period fireplace, built in eaves storage, access to roof space.

Bedroom Three

11' 10" x 8' 6" (3.61m x 2.59m)

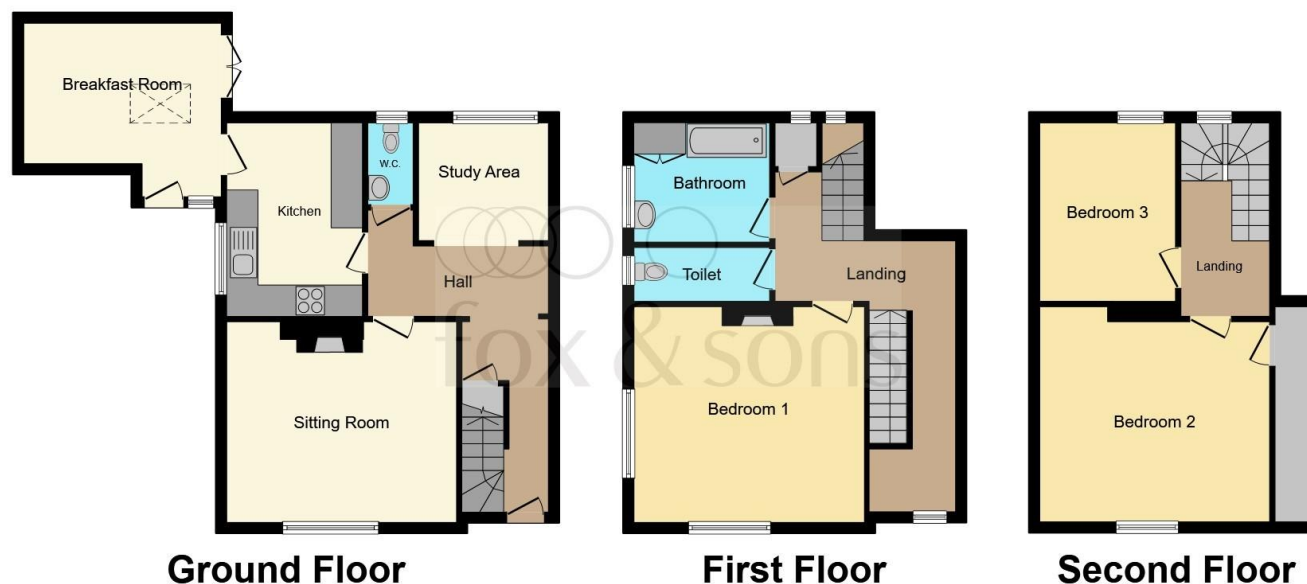
Double glazed window to rear, fitted carpet, access to roof space, radiator.

Outside

To the front & side is a mature tiered garden with shrubs and trees, steps lead up to a seating area with gate giving access to the off road parking area. To the rear of the breakfast room there is an enclosed courtyard area.

Location

The property is situated within the pretty coastal resort of Minehead, known as the gateway to Exmoor and the start of The South West Coast Path. Minehead offers a good range of day to day amenities, a hospital and schools for all ages including a sixth form college. The rolling hills of Exmoor, Quantock Hills and Brendon Hills are all within easy motoring distance as are the sandy beaches at Blue Anchor. The county town of Taunton is some 24 miles to the south and offers a further range of high street shops, public and state schools and great access links to both the M5 and A303. A direct train link to London Paddington is available from Taunton station in approximately two hours.



view this property online fox-and-sons.co.uk/Property/MIH107460



welcome to

Northleigh, Martlet Road, Minehead

- NO ONWARD CHAIN - Sought After North Hill Location
- Semi-Detached Period Home
- Three Bedrooms - Sitting Room - Kitchen - Study Area
- Breakfast Room - Gas Central Heating
- Front & Side Garden - Off Road Parking

Tenure: Freehold EPC Rating: D

Council Tax Band: D

£375,000



Please note the marker reflects the postcode not the actual property

view this property online fox-and-sons.co.uk/Property/MIH107460



Property Ref:
MIH107460 - 0006

1. MONEY LAUNDERING REGULATIONS Intending purchasers will be asked to produce identification documentation at a later stage and we would ask for your co-operation in order that there is no delay in agreeing the sale. 2. These particulars do not constitute part or all of an offer or contract. 3. The measurements indicated are supplied for guidance only and as such must be considered incorrect. Potential buyers are advised to recheck measurements before committing to any expense. 4. We have not tested any apparatus, equipment, fixtures or services and it is in the buyers interest to check the working condition of any appliances. 5. Where an EPC, or a Home Report (Scotland only) is held for this property, it is available for inspection at the branch by appointment. If you require a printed version of a Home Report, you will need to pay a reasonable production charge reflecting printing and other costs. 6. We are not able to offer an opinion either written or verbal on the content of these reports and this must be obtained from your legal representative. 7. Whilst we take care in preparing these reports, a buyer should ensure that his/her legal representative confirms as soon as possible all matters relating to title including the extent and boundaries of the property and other important matters before exchange of contracts.


fox & sons



01643 702281



minehead@fox-and-sons.co.uk



13 The Parade, MINEHEAD, Somerset, TA24 5NL



fox-and-sons.co.uk