

The Leaze, Chelworth, Malmesbury, Wiltshire, SN16 9SF

Immaculate detached house
Elegant updated interior
Peaceful village setting
4 double bedrooms
Large light-filled kitchen/family room
Living room with fireplace
Bathroom and en-suite
Double garage and private parking
Front and rear mature gardens



01666 840 886
jamespyle.co.uk



The Barn, Swan Barton, Sherston, Wiltshire, SN16 0LJ
James Pyle Ltd trading as James Pyle & Co. Registered in England & Wales No: 10927906

Price Guide: £775,000

Approximately 1,627 sq.ft excluding garage and outbuilding



‘With an elegant stylish interior, this detached family-house is set within a peaceful position with mature gardens’

The Property

Positioned down a private driveway within the peaceful rural village of Chelworth, The Leaze is an immaculate detached house offering a perfect blend of modern comfort and elegant style. Built in 1986, this inviting home has been significantly improved by the current owners, extending to around 1,627 sq.ft. of beautifully presented accommodation arranged over two floors.

At the heart of the ground floor lies a newly reconfigured open-plan kitchen/dining room, forming a versatile hub ideal for daily family life or entertaining guests. The kitchen features an extensive range of units fitted around a central breakfast bar, and is well-equipped with an integrated dishwasher, double oven, induction hob, and built-in bin storage. A useful utility room has convenient rear access. Across the entrance hall, there is a dual-aspect living room complete with an open fireplace.

The first floor hosts four good-sized double bedrooms, each benefiting from fitted storage. The principal bedroom suite is dual-aspect, providing tranquil views across the surrounding countryside and boasting an updated en-suite shower room. The equally well-appointed family bathroom, also recently updated, is located off the landing.

Externally, The Leaze benefits from ample off-street parking on a private gravelled driveway which leads to a double garage with power and a new electric door. Adjoining the garage is a versatile outbuilding, also with power connected, offering excellent potential for conversion into a home office or workshop. The gardens, situated at both the front and rear, are screened for a good degree of privacy and thoughtfully planted with an abundance of perennials, creating a serene outdoor environment.

Situation

Chelworth is an attractive rural hamlet, conveniently situated between the popular historic market towns of Malmesbury, Tetbury and Cirencester. The neighbouring village of Oaksey, which is within walking distance, has a shop and post office, a pretty church, the Wheatsheaf Inn pub and a highly sought-after primary school. To the south is the village of Crudwell which also has a primary school and a choice of pubs which includes the well-regarded Potting Shed for the food enthusiast. Malmesbury, Tetbury and Cirencester have a further range of facilities and schooling. The village is situated close to the Cotswold Water Park where a wide variety of activities can be enjoyed as well as a 9 hole golf course on the edge of Oaksey. There is easy access to the commercial centres of Swindon, Cheltenham, Bristol and beyond. The mainline rail services to London from nearby Kemble is only a 5 minute drive away (Paddington c.70 mins).

Additional Information

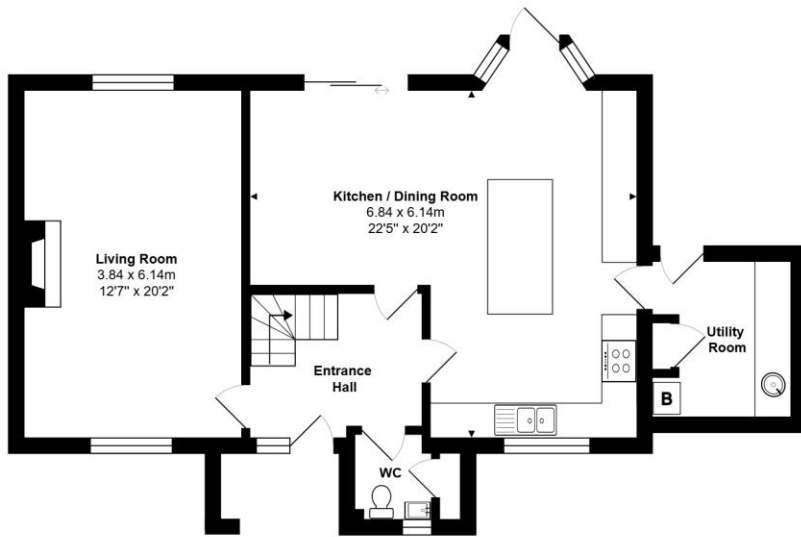
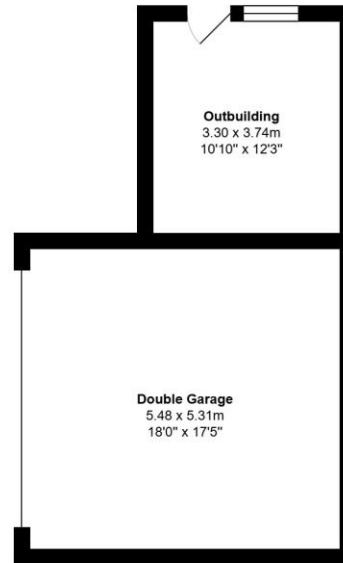
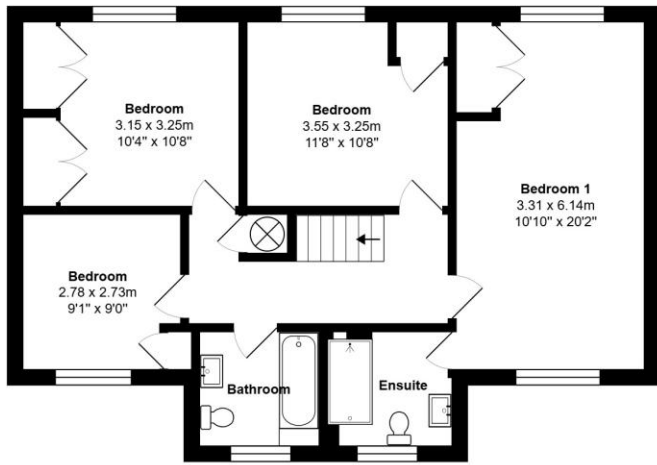
The property is Freehold with oil-fired central heating, private septic tank drainage shared with the neighbouring property, mains water and electricity. Ultrafast broadband is available. Information taken from the Ofcom mobile and broadband checker, please see the website for more information and mobile coverage. Wiltshire Council Tax Band F.

Directions

From Malmesbury, follow the A429 towards Cirencester. Pass through Crudwell, and take the next right hand turn signposted towards Chelworth. Follow the road into the village and bear left at the triangle to locate the driveway to the property as indicated on the right hand side.

Postcode SN16 9SF
What3words: ///jumpy.doses.cuts





Ground Floor

House Area: 151.2 m.sq. ... 1627 sq.ft.

Total Area: 193.6 m² ... 2084 ft²

All measurements are approximate and for display purposes only

Energy Efficiency Rating		Current	Potential
Very energy efficient - lower running costs			
A	(92-100)		
B	(81-91)		
C	(69-80)		71
D	(55-68)		
E	(39-54)	48	
F	(21-38)		
G	(1-20)		
Not energy efficient - higher running costs			
England & Wales		EU Directive 2002/91/EC	



James Pyle Holdings Ltd and any parties they are acting for hereby give notice that these details are for guidance only and cannot guarantee accuracy of any description, dimension, condition or any required permission for occupation and use. It is not company policy to test any services or appliances in properties offered for sale and these should be verified by the purchaser's solicitors. James Pyle Holdings Ltd will not be liable for any loss arising from the use of these details. No responsibility is taken for any errors, omissions or misstatements within these particulars. It should not be assumed that the property has all the necessary planning, building regulation or other consents. These particulars do not form any part of any offer or contract and must not be relied upon as statements or representations of fact. James Pyle & Co is a trading name of James Pyle Holdings Ltd, registered in England & Wales. Registered number 10927906

COTSWOLD & COUNTY (HEAD OFFICE)

The Barn, Swan Barton, Sherston SN16 0LJ

01666 840 886 or 01452 812 054

LONDON (ASSOCIATE OFFICE)

121 Park Lane, Mayfair W1k 7AG

0207 0791 577