



Let **UK** Home

2 Bedrooms

Flat

Located in London

£5,350 Per Month



info@letukhome.co.uk

<https://www.letukhome.co.uk/>

01795 358 886



10 Salutation Gardens London

WC1X 0EA



Let UK Home are excited to offer this spectacular two bedroom apartment in the heart of Watermark House part of the Postmark.

This property comprises a large bright open plan kitchen and living room leading to a large private balcony with great views, two double bedrooms with fitted wardrobes (master with en-suite & balcony), a large family sized bathroom and ample storage. A virtual viewing is provided.

Five-star luxury facilities 24-hour VIP concierge service, private living room, cinema, rooftop terrace and bar, gym, sauna, treatment room, luxury swimming pool, spa.

The area surrounding the development is dotted with places of great historical and cultural interest, including Farringdon and Clerkenwell that retain medieval architecture, the renovated and vibrant King's Cross central business district, the academically-rich Chancery Lane, and the East London Tech City on Old Street, which is comparable to Silicon Valley in the United States. In addition, a number of must-see cultural attractions such as the British Museum, British Library and Barbican Center are just a stone's throw away from the development.

The area where the development is located is within walking distance of two of London's top five universities: UCL and LSE, as well as the Central Saint Martins College of Art, making it a true cradle of education.

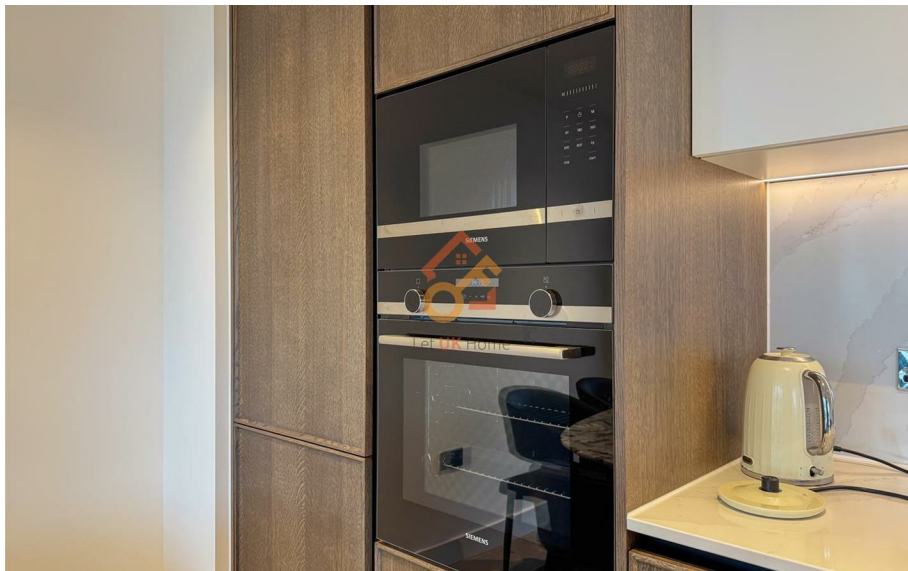
The Postmark development is located in the central block of London's Zone 1,

10 Salutation Gardens London

£5,350 Per Month



- 4th Floor
- Swimming Pool
- Cinema & Game Room
- Sauna & Steam Room
- Virtual Viewing Available
- 24h Security & Concierge Service
- The Gym
- The Spa
- EPC Rating: C
- Two Balconies



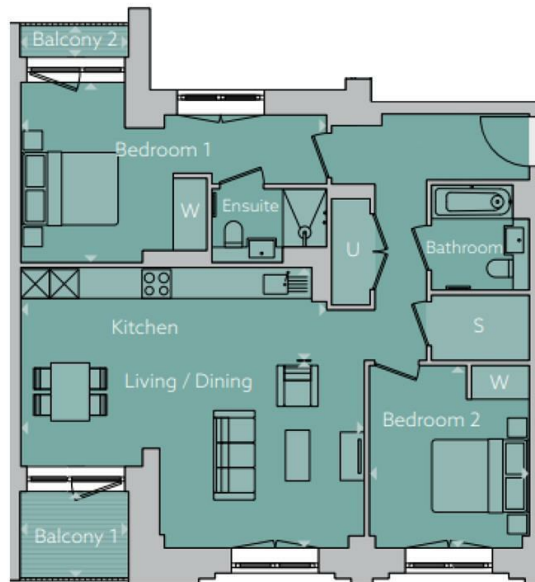


Let **UK** Home

3F 2 Eastbourne Terrace
Paddington
London
W2 6LG

01795 358 886

info@letukhome.co.uk



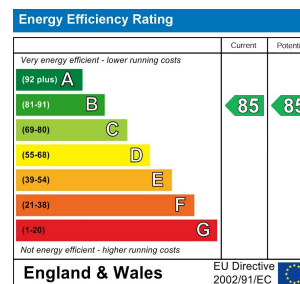
Living / Dining	3.85m x 7.10m
Kitchen	1.90m x 6.30m
Bedroom 1	3.70m x 6.30m
Bedroom 2	3.75m x 3.30m
Balcony 1	1.75m x 2.25m
Balcony 2	0.90m x 2.25m

Total floor area 92 square metres

Council Tax Band: F

Local Authority:

Agents Note: Whilst every care has been taken to prepare these particulars, they are for guidance purposes only. All measurements are approximate and are for general guidance purposes only and whilst every care has been taken to ensure their accuracy, they should not be relied upon and potential buyers/tenants are advised to recheck the measurements.



<https://www.letukhome.co.uk/>