



Gloucester Place, W1U

£795 Per week

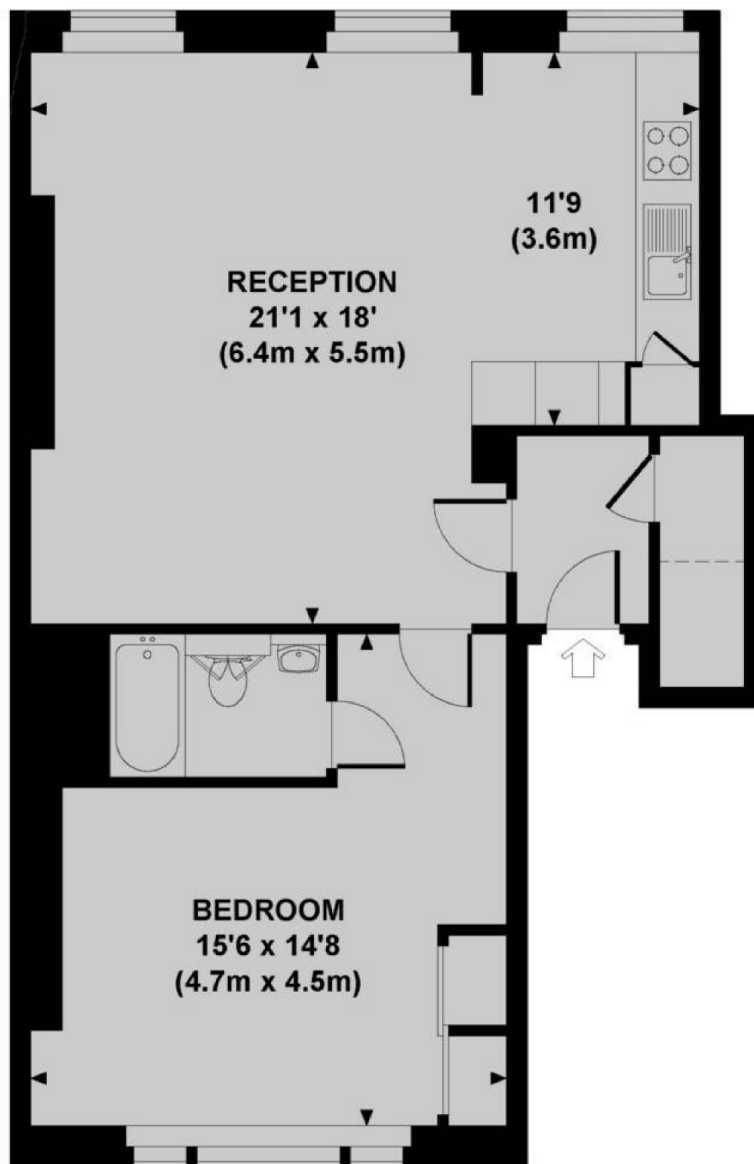
A one bedroom apartment on the second floor of this townhouse close to Regent's Park. The flat has an open-plan kitchen/reception, double bedroom and bathroom. Unfurnished.

Gloucester Place is a short walk from the vibrant shops, bars, cafes and restaurants of both Marylebone and Portman Villages. The open spaces of Regent's Park and Hyde Park are within easy reach and there are transport links from Marble Arch, Baker Street, Edgware Road and Bond Street stations.

Features

Second Floor Flat
One Bedroom
Bathroom
Kitchen/Reception
Unfurnished
The Portman Estate

Gloucester Place, London, W1U



SECOND FLOOR

GLOUCESTER PLACE, W1

Approx. gross internal area
625 Sq Ft. / 58 Sq M.

Dexters

Marylebone
53-55 Weymouth Street
London
W1G 8NJ
Lettings
0207 224 5545

Energy Rating: C. We aim to make our particulars both accurate and reliable. However they are not guaranteed; nor do they form part of an offer or contract. If you require clarification on any points then please contact us, especially if you're traveling some distance to view. Please note that appliances and heating systems have not been tested and therefore no warranties can be given as to their good working order.

 **RICS** | Regulated
Estate Agent
and Letting Agent

dexters.co.uk