



HEIDEGGER CRESCENT, SW13

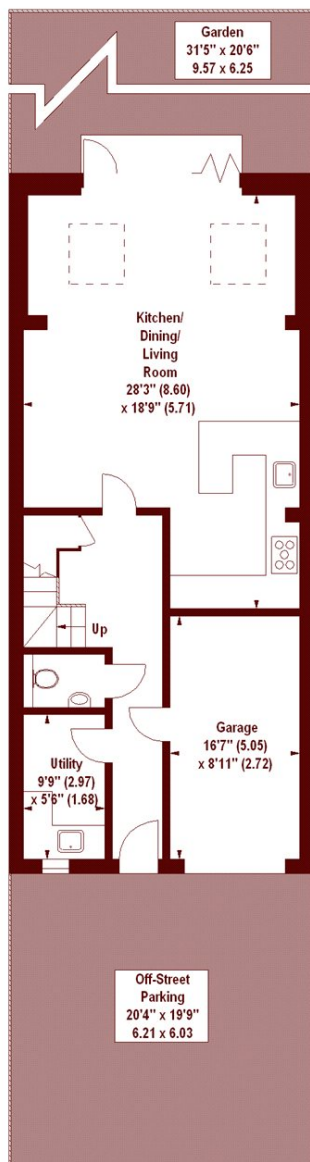
£2,150,000

Marsh & Parsons is delighted to bring this modern townhouse to the market which is located on a prestigious private crescent with spectacular views over the London Wetlands.

Four double bedrooms
Off-street parking
Private development

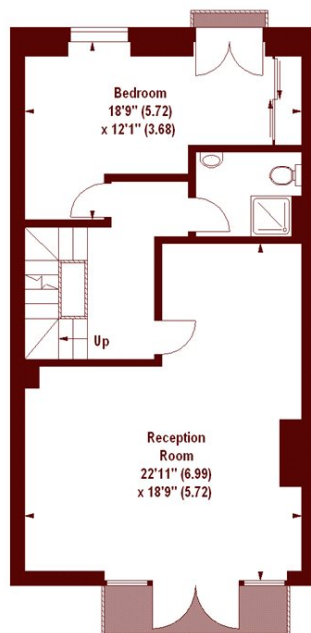
Open-plan kitchen/living room
Moments from the Thames
Barnes Waterside

STEP INSIDE HEIDEGGER CRESCENT

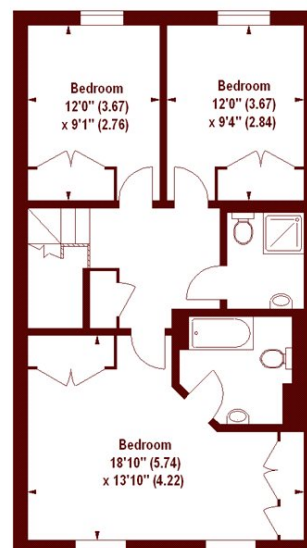


GROUND FLOOR

Heidegger Crescent, SW13
APPROX. GROSS INTERNAL FLOOR AREA 2200 SQFT / 204.38 SQM



FIRST FLOOR



SECOND FLOOR

Illustration For Identification Purposes Only. Not To Scale
*Floorplan Drawn According To RICS Guidelines
Copyright of FeaturePRO

Barnes & East Sheen
020 8563 8333

Energy Rating: C We aim to make our particulars both accurate and reliable. However, they are not guaranteed; nor do they form part of an offer or contract. If you require clarification on any points then please contact us, especially if you're traveling some distance to view. Please note that appliances and heating systems have not been tested and therefore no warranties can be given as to their good working order

**MARSH &
PARSONS**