

## Chelsea Crescent, SW10

£1,962 Per week

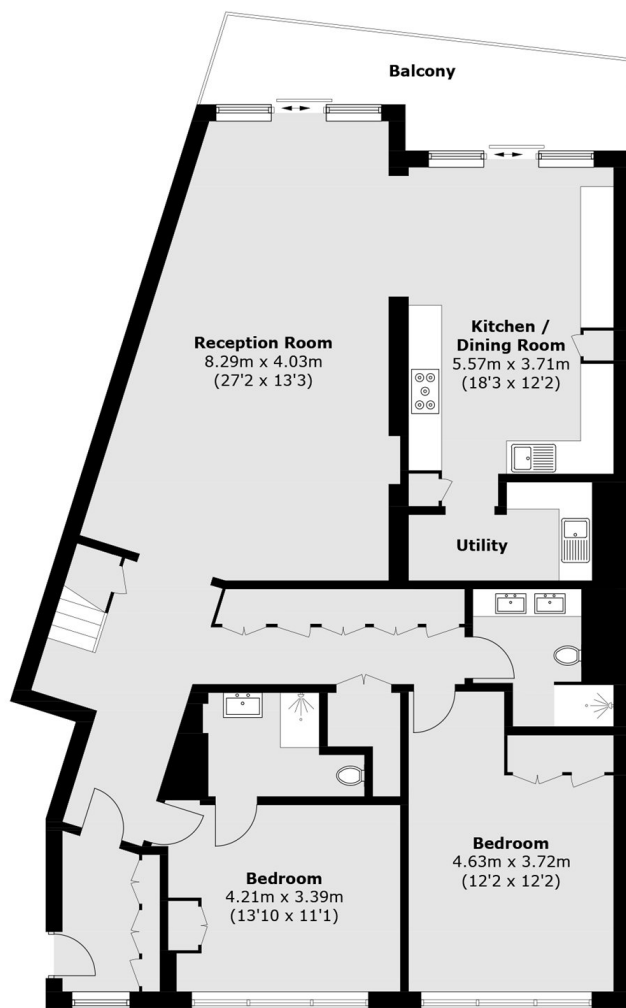
An exceptional 3 bedroom penthouse with fantastic views of The Thames from multiple private terraces. The property comes with secure underground parking.

Chelsea Harbour is an exclusive riverside development a short walk from the Kings Road.

### Features

- Exceptional Penthouse
- Stunning Interiors
- Private Terrace
- River Views
- Exclusive Development
- Extremely Spacious

# Chelsea Crescent, London, SW10



**Sixth Floor**



**Seventh Floor**

Total area (approx.): 256.0 sq. m (2,755.5 sq. ft)  
Balcony: 34.3 sq. m (369.2 sq. ft)