

Langley Road, Surbiton, KT6 6BA

Guide Price £550,000

🛏️ 2 🚗 2 🛋️ 1

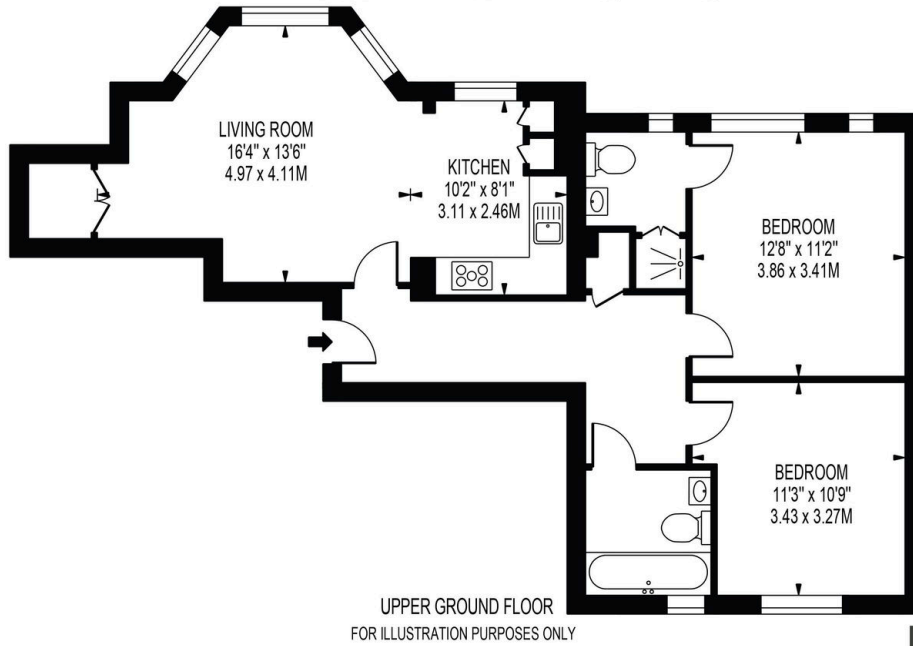


- Two bedroom, two bathroom apartment
- Moments from Surbiton Mainline Station
- High ceilings allowing an abundance of natural light to flow in
- Principle bedroom with en-suite
-
- Located within a landmark development
- High quality wooden flooring
- EPC C - Green
- Fob access for parking and entrance into building
-



**LONGWOOD HOUSE,
LANGLEY ROAD**

APPROXIMATE GROSS INTERNAL FLOOR AREA: 780 SQ FT - 72.4 SQ M



THIS FLOOR PLAN SHOULD BE USED AS A GENERAL OUTLINE FOR GUIDANCE ONLY AND DOES NOT CONSTITUTE IN WHOLE OR IN PART AN OFFER OR CONTRACT.
ANY INTENDING PURCHASER OR LESSEE SHOULD SATISFY THEMSELVES BY INSPECTION, SEARCHES, ENQUIRIES AND FULL SURVEY AS TO THE CORRECTNESS OF EACH STATEMENT.
ANY AREAS, MEASUREMENTS OR DISTANCES QUOTED ARE APPROXIMATE AND SHOULD NOT BE USED TO VALUE A PROPERTY OR BE THE BASIS OF ANY SALE OR LET.



A stunning two bedroom two bathroom raised ground floor luxury apartment located within a landmark development within easy reach of Surbiton mainline station and The River Thames.