



2, Clock House Place, Stanstead Abbots

SG12 8AW

Price Guide £1,100,000



stevenoates.com



2 Clock House Place, Stanstead Abbots, Herts, SG12 8AW

A impeccably well presented 4 bedroom detached family home located in a tucked away position giving a real sense of escapism, yet only a short distance from St. Margaret's mainline train station and the village high street. The stylish and renovated accommodation comprises of an entrance hall with downstairs wc, a dual aspect living room, play room/home office, large kitchen/diner. On the first floor, there are 4 bedrooms including a main bedroom suite with dressing room and en-suite, whilst there is an additional en-suite and a family bathroom. Externally, there is driveway parking, a double garage and beautiful, unoverlooked rear gardens which feature a number of entertaining areas and a sizable natural pond creating a tranquil environment.

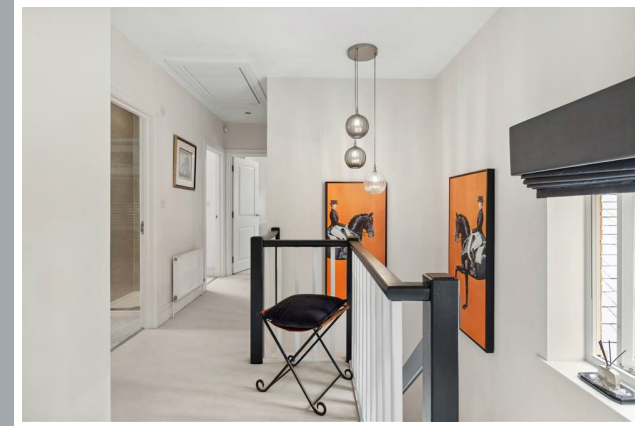
The property is located in an enviable position tucked away in a small cul de sac of just two houses, yet only a short distance from the thriving High Street of Stanstead Abbots and only a 'stone's throw' from St Margaret's mainline train station serving London's Liverpool Street. The village itself offering a great selection of shops, restaurants and takeaways, along with a choice of pubs, with the nearby towns of Hoddesdon and Ware are a short drive away providing excellent schooling and larger shopping facilities.



70 Fore Street, Hertford, Hertfordshire, SG14 1BY



70 Fore Street, Hertford, Hertfordshire, SG14 1BY



70 Fore Street, Hertford, Hertfordshire, SG14 1BY



70 Fore Street, Hertford, Hertfordshire, SG14 1BY



70 Fore Street, Hertford, Hertfordshire, SG14 1BY



70 Fore Street, Hertford, Hertfordshire, SG14 1BY



70 Fore Street, Hertford, Hertfordshire, SG14 1BY

**Approximate Gross Internal Area 1813 sq ft - 169 sq m
(Including Garage)**

Ground Floor Area 1029 sq ft – 96 sq m

First Floor Area 784 sq ft – 73 sq m



Floor plan produced in accordance with RICS Property Measurement 2nd Edition. Although Pink Plan Ltd ensures the highest level of accuracy, measurements of doors, windows and rooms are approximate and no responsibility is taken for error, omission or misstatement. These plans are for representation purposes only and no guarantee is given on the total square footage of the property within this plan. The figure icon is for initial guidance only and should not be relied on as a basis of valuation.



These particulars, whilst believed to be accurate are set out as a general outline only for guidance and do not constitute any part of an offer or contract. Intending purchasers should not rely on them as statements of representation of fact, but must satisfy themselves by inspection or otherwise as to their accuracy. No person in this firm's employment has the authority to make or give any representation or warranty in respect of the property.

