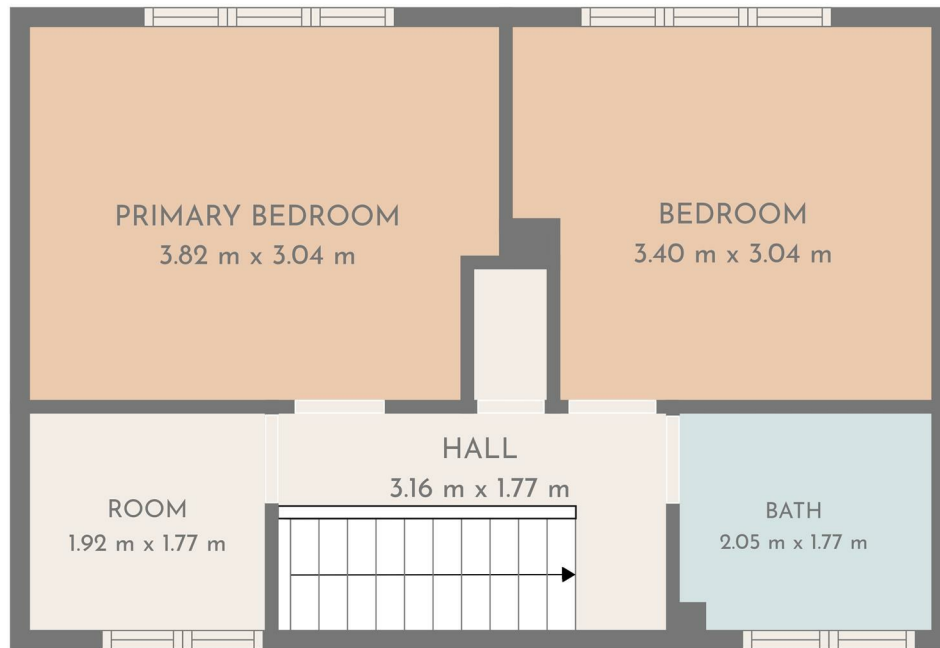




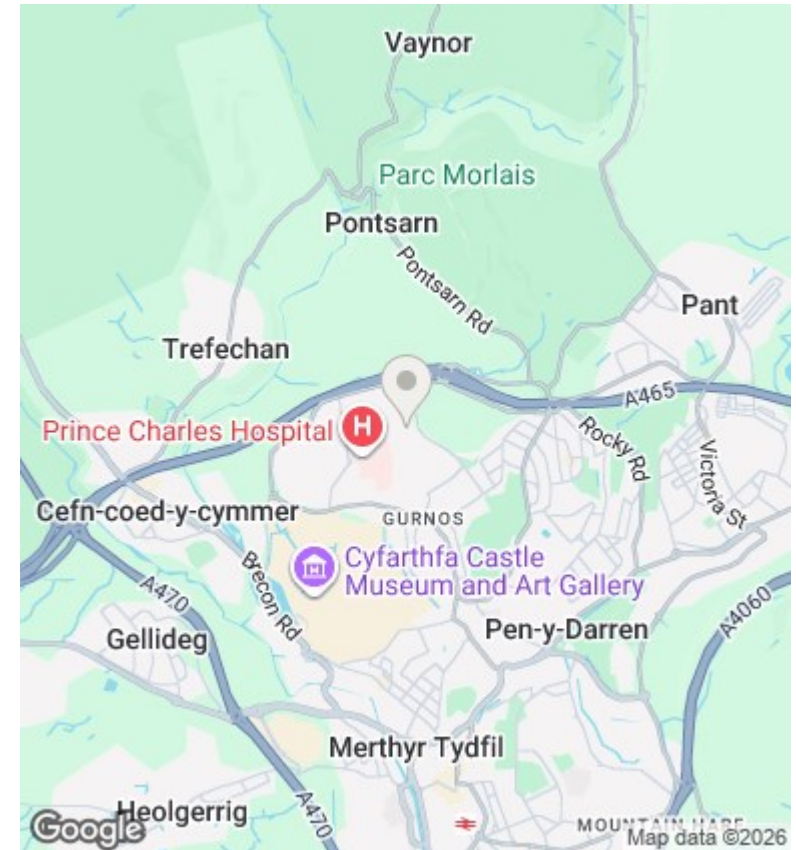
2 Cypress Close, Merthyr Tydfil, CF47 9BP

Offers in excess of £85,000

- 3 spacious bedrooms
- End terrace house
- Located in Merthyr Tydfil
- Ideal for families
- 1 modern bathroom
- Built in 1960
- Close to local amenities
- Cosy reception room
- 775 sq ft living space
- Quiet residential area



TOTAL: 72 m²
 Ground floor: 36 m², 1st floor: 36 m²
 EXCLUDED AREAS: SCREENED PORCH: 2 m², WALLS: 9 m²
FLOOR PLAN CREATED BY CUBICQA APP - MEASUREMENTS DEEMED HIGHLY RELIABLE BUT NOT GUARANTEED.



Directions

Viewings

Viewings by arrangement only. Call 029 211 22222 to make an appointment.

Council Tax Band

B

EPC Rating:

D

Energy Efficiency Rating		Current	Potential
<i>Very energy efficient - lower running costs</i>			
(92 plus) A			
(81-91) B			
(69-80) C			
(55-68) D		55	
(39-54) E			
(21-38) F			
(1-20) G			
<i>Not energy efficient - higher running costs</i>			
England & Wales		EU Directive 2002/91/EC	