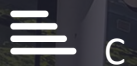




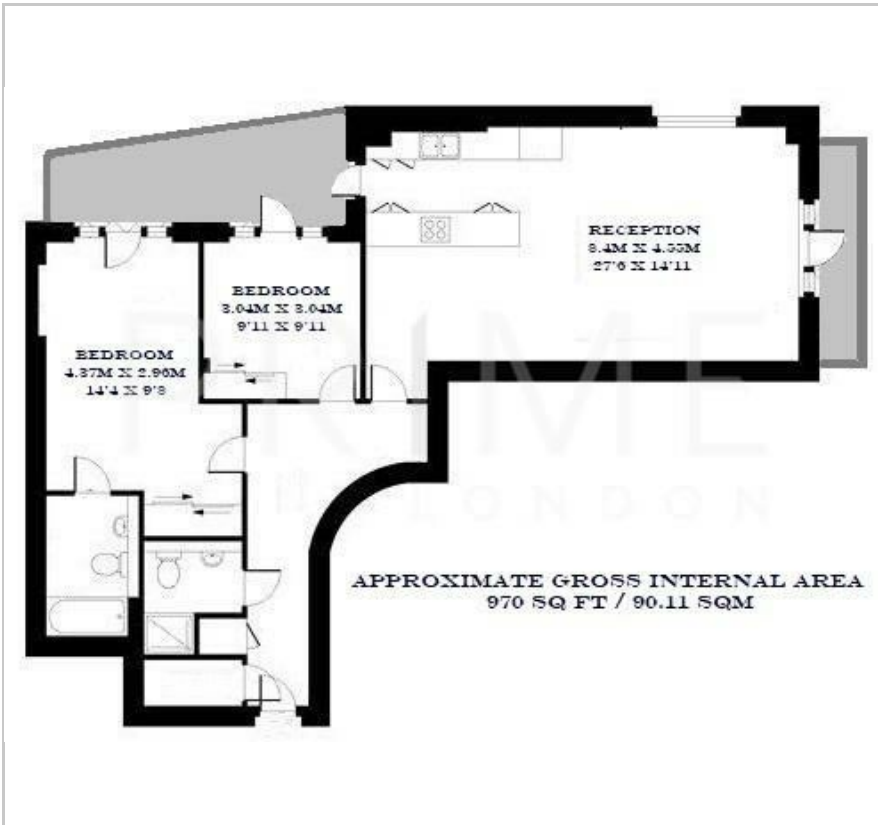
## One N One Building

8 Southgate Road, De Beauvoir Town, N1 3LY

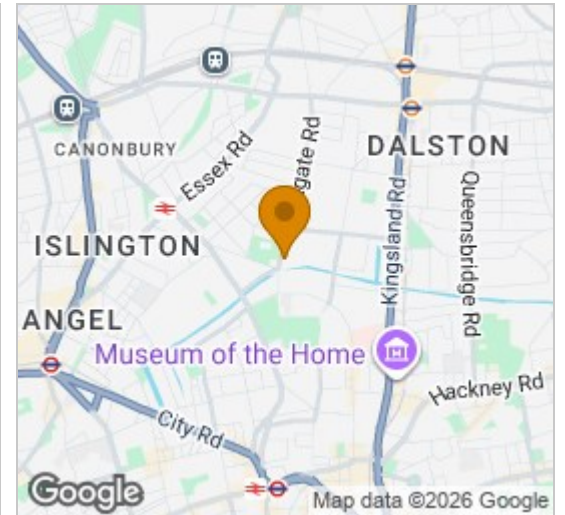
£695 Per Week



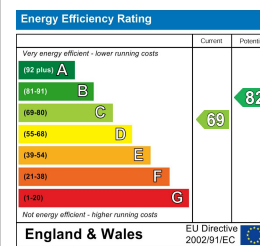
## Floor Plan



## Area Map



## Energy Efficiency Graph



## Viewing

By appointment. Contact us on 0207 052 1075 if you wish to arrange a viewing appointment for this property, or require further information.

- 970 sq ft (90.11 sqm)
- Residents' Gym and Cinema
- Ninth floor
- Porter



Totalling 970 sq ft (90.11 sqm) and situated on the ninth floor, this apartment is located within this modern development (with Porter, Gym and Cinema) on the banks of the Regents canal, and is available exclusively through Prime London.

The property offers contemporary living space with views over Rosemary Gardens and along the Regents canal, and comprises a bright and spacious living/dining space with fully integrated open plan kitchen, two large double bedrooms and two bathrooms.

Southgate Road is perfectly positioned opposite the green spaces of Rosemary Gardens and nestled within close proximity to vibrant Islington, Dalston and Shoreditch.

A number of transport links service the property including Haggerston (East London Line) and Essex Road (National Rail) as well as a number of bus links.



These particulars, whilst believed to be accurate are set out as a general outline only for guidance and do not constitute any part of an offer or contract. Intending purchasers should not rely on them as statements of representation of fact, but must satisfy themselves by inspection or otherwise as to their accuracy. No person in this firm's employment has the authority to make or give any representation or warranty in respect of the property.