



**GLOUCESTER STREET**  
PIMLICO

**JACKSON-STOPS** 

---

## GLOUCESTER STREET PIMLICO, SW1V

ASKING PRICE: £2,500 PCM

A charming ground floor flat in the Pimlico Grid.

The property is well-presented with French style furnishings, high ceilings and modern fittings. Just 0.4 miles from Pimlico Underground Station, 0.7 miles from Victoria Station, 0.8 miles from Sloane Square Underground Station and 0.6 miles from Battersea Park.



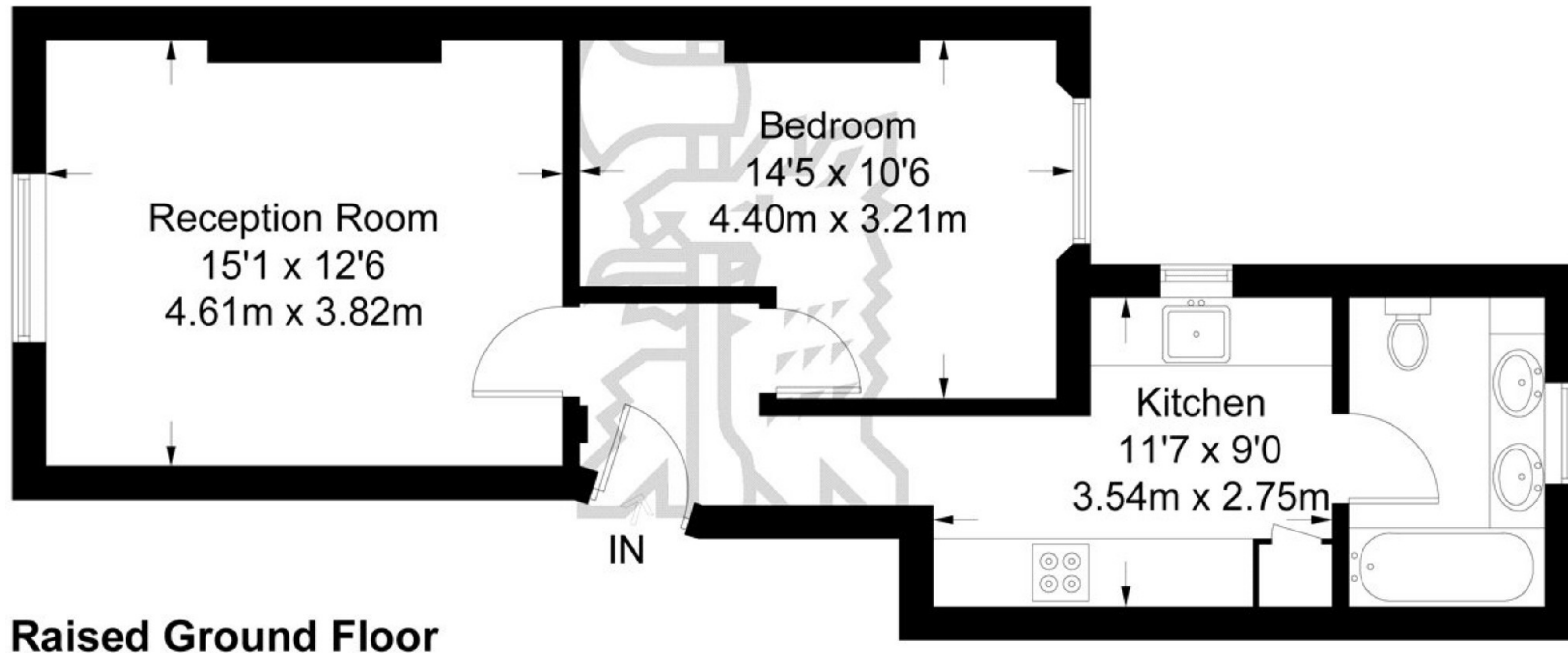
### KEY FEATURES

- Bedroom
- Bathroom
- Kitchen
- Reception
- Furnished
- Tax Band: E



# Gloucester Street

Approximate Gross Internal Area = 525 sq ft / 48.8 sq m



## Raised Ground Floor

Not to scale, for guidance only and must not be relied upon as a statement of fact.  
All measurements and areas are approximate only and have been prepared in accordance with the current edition of the RICS Code of Measuring Practice.

Energy Rating: D. We aim to make our particulars both accurate and reliable. However they are not guaranteed; nor do they form part of an offer or contract. If you require clarification on any points then please contact us, especially if you are travelling some distance to view. Please note that appliances and heating systems have not been tested and therefore no warranties can be given as to their good working order.

**ASKING PRICE: £2,500 PCM**

PIMLICO

020 7828 4243

pimlicolettings@jackson-stops.com

jackson-stops.co.uk

**JACKSON-STOPS** 