



**BEAUCHAMP
ESTATES**

Charles Street

MAYFAIR





A townhouse with a private entrance located in a boutique development.



Exterior

Welcome to Six Charles Street, a boutique collection of beautifully crafted homes at one of London's most prestigious postcodes. Situated just off the corner of Berkeley Square, these grand residences include lateral apartments, a mews townhouse and a stunning duplex penthouse. With interiors styled by the renowned 1508 studio, each home blends heritage features with contemporary elegance – the perfect setting for your own Mayfair story.

Highlights

- Garage
- Newly developed by REDD
- Interior design in collaboration with 1508
- Originally built in 1849
- Concierge





Interiors

Accessed via the main entrance of Six Charles Street or through its own private front door on Hay's Mews, this three-bedroom townhouse offers a private secure parking space as well as 1,553 sq ft of living space.

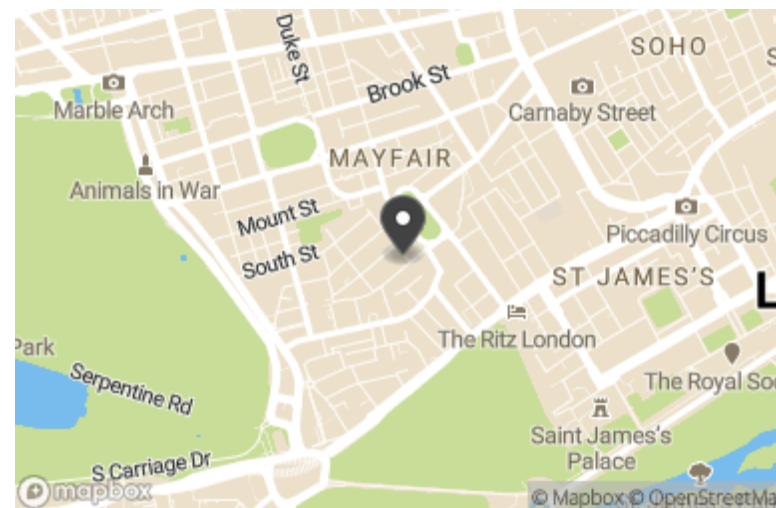


Features

- 24/7 Concierge
- Garage

Location

One of the capital's most sought-after addresses, Mayfair offers the very best of London. The finest museums and galleries; vibrant restaurants and nightlife; and iconic fashion and architecture. Discover local secrets, explore open green spaces and experience the world's most famous shops and hotels.



Terms

Price: £5,800,000

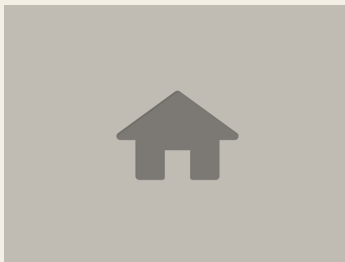
Tenure: Leasehold, 998 years remaining

Ground Rent:

Service Charge: £31,060.00

Local Authority: Westminster

Council Tax: H



Beauchamp Estates, their clients and any joint agents give notice that: 1. They are not authorised to make or give any representation or warranties in relation to the property either here or elsewhere, either on their own behalf or on behalf of their client or otherwise. They assume no responsibility for any statement that may be made in these particulars. These particulars do not form part of any offer or contract and must not be relied upon as statements or representations of fact. 2. Any Areas, measurements or distances are approximate. The text photographs and plans are for guidance only and are not necessarily comprehensive. It should not be assumed that the property has all necessary planning, building regulation or other consents and Beauchamp Estates have not tested any services, equipment or facilities. Purchasers must satisfy themselves by inspection or otherwise.

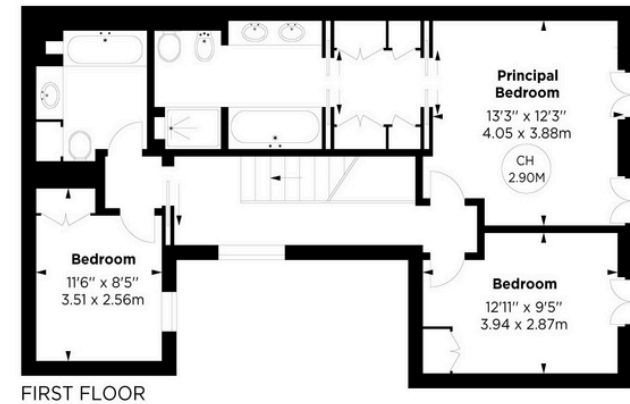
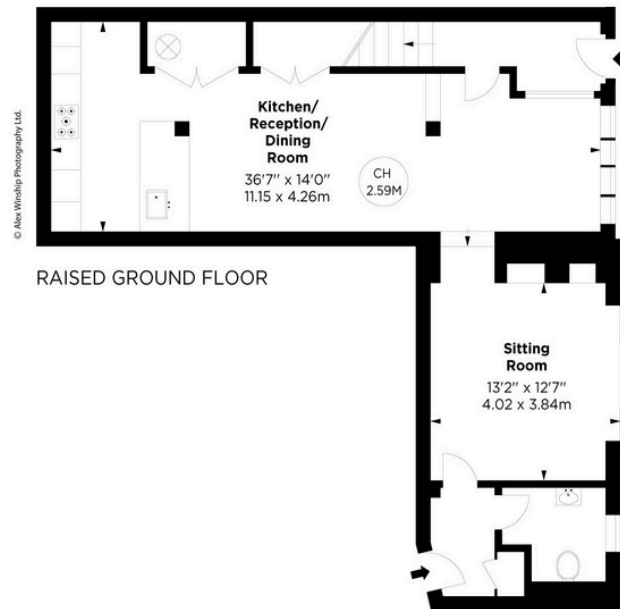
Charles Street, W1

APPROX. GROSS INTERNAL AREA *
1553 Sq Ft - 144.27 Sq M



This floorplan is for GUIDANCE ONLY and NOT FOR VALUATION purposes.

Key :
CH - Ceiling Height



* Floorplan for guidance only, not to scale or valuation purposes. It must not be relied upon as a statement of fact. All measurements and areas are approximate and have been prepared in accordance with the current edition of the RICS Code of Measuring Practice.





**BEAUCHAMP
ESTATES**

Beauchamp Estates - Mayfair

24 Curzon Street,
London, W1J 7TF

020 7499 7722

londoninformation@beauchampestates.com

www.beauchampestates.com