

OVER 60?

Secure this property
for up to **59% less!**



Guide Price

£825,000

Freehold

5x  2x  3x 

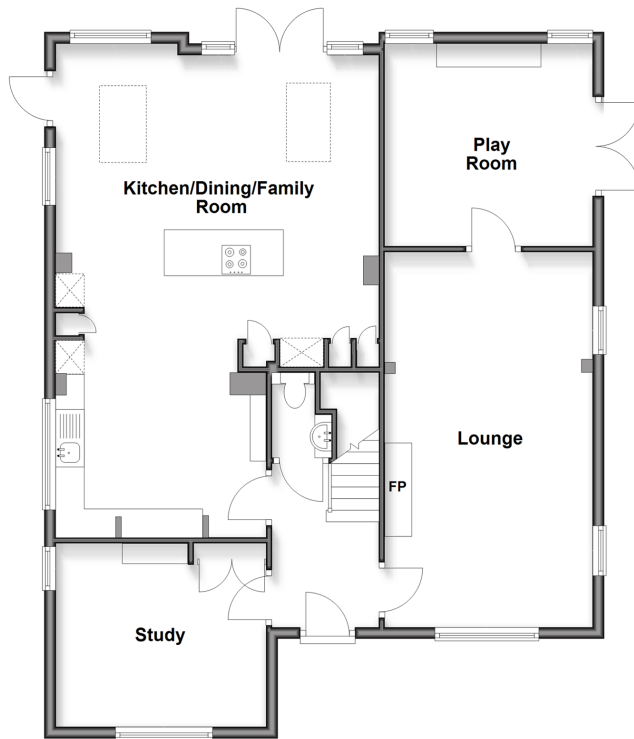
Pheasant Lane, Maidstone, Kent, ME15

Wards

Helping you move forwards

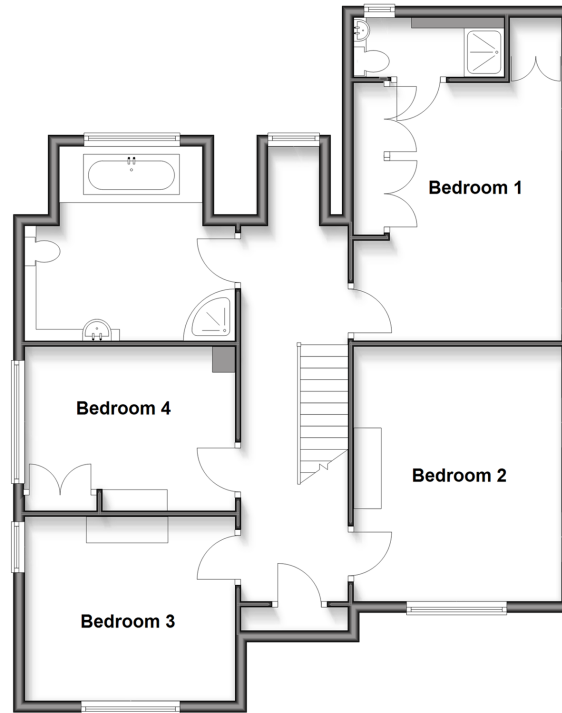
Ground Floor

Approx. 101.8 sq. metres (1095.9 sq. feet)



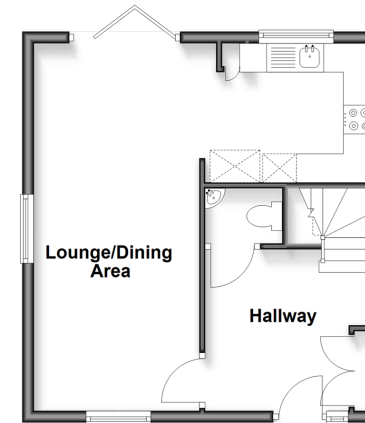
First Floor

Approx. 86.8 sq. metres (934.7 sq. feet)



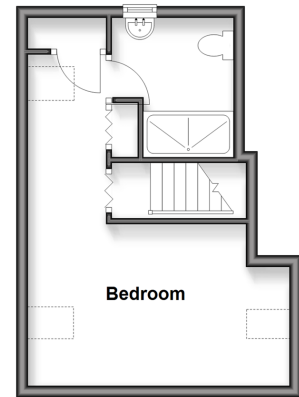
Annexe Ground Floor

Approx. 37.8 sq. metres (407.2 sq. feet)



Annexe First Floor

Approx. 25.5 sq. metres (274.3 sq. feet)



Accommodation

GROUND FLOOR

Entrance Hall
Downstairs Cloakroom
Study: 13'1 x 11'1 (3.99m x 3.38m)
Lounge: 21'0 x 11'0 (6.41m x 3.36m)
Play Room: 11'6 x 11'5 (3.51m x 3.48m)
Kitchen/Dining/Family Room: 28'3 x 18'3 (8.62m x 5.57m)

FIRST FLOOR

Landing
Bedroom 1: 14'8 x 12'2 (4.47m x 3.71m)
En Suite Shower Room
Bedroom 2: 15'3 x 12'0 (4.65m x 3.66m)
Bedroom 3: 12'0 x 10'6 (3.66m x 3.20m)
Bedroom 4: 12'0 x 8'1 (3.66m x 2.47m)
Bathroom: 11'1 x 10'4 (3.38m x 3.15m)

ANNEXE GROUND FLOOR

Hallway
Cloakroom
Lounge/Dining Area: 20'1 x 19'3 (6.13m x 5.87m)
Kitchen

ANNEXE FIRST FLOOR

Landing
Bedroom: 18'9 x 14'5 (5.72m x 4.40m)
En Suite Shower Room

OUTSIDE

Driveway
Front and Rear Gardens
Cabin



Main features

- Set on a generous plot of 0.357 of an acre
- Spacious, open plan kitchen/dining/family room, forming the central hub of the home
- Spacious and flexible accommodation
- Quiet tree lined, no through road setting, conveniently located for the town centre, schools and the Loose Valley conservation area
- Self contained, detached two storey annexe, perfect for family, guests, or as a rental income



Nearest Schools

Primary Schools: Tiger Primary 0.2 miles, Loose Primary 1.0 miles
Secondary Schools: New Line Learning Academy 0.2 miles, Maidstone Grammar School 1.9 miles, St Simon Stock Catholic School 2.1 miles



Transport Information

Train Stations: Maidstone West 1.5 miles, Maidstone East 1.9 miles, Maidstone Barracks 1.9 miles



Address

Pheasant Lane, Maidstone, Kent, ME15



Directions

For directions to this property please contact us.



Wards
Helping you move forwards

Call Loose Branch 01622 744067 ■ wardsofkent.co.uk



■ Through a Homewise Home For Life Plan people aged 60+ can secure this property for up to 59% less, by purchasing a Lifetime Lease



13019787/20260330/AT/VMK