



Connells

Rivendell Marsh Green Road
Marsh Green Edenbridge



Property Description

A beautifully presented and spacious five bedroom detached family home, finished to an exceptional standard throughout and perfectly positioned along the sought after Marsh Green Road.

This stunning property offers versatile and contemporary living, centred around a superb open plan kitchen and dining space the true heart of the home ideal for both everyday family life and entertaining. The kitchen is stylishly designed with modern fittings, generous workshop space and seamless flow into the dining and living areas, creating a bright and sociable environment.

The ground floor further benefits from a separate study, perfect for home working, a private gym space, and excellent additional reception areas providing flexibility for modern lifestyles.

Upstairs, five well-proportioned bedrooms offer comfortable accommodation for the whole family, with the principal bedroom enjoying its own en-suite shower room. The remaining bedrooms are served by a well-appointed family bathroom.

Externally, the property continues to impress with a dedicated outside office ideal for remote working or creative use alongside a well maintained garden space perfect for relaxing or entertaining.

Entrance Hall

Cloakroom

Study

11' 7" x 10' 1" (3.53m x 3.07m)

Reception Room

18' 10" x 14' 2" (5.74m x 4.32m)

Kitchen/Dining Room

23' 8" x 19' 7" (7.21m x 5.97m)

Utility Room

9' 1" x 6' 9" (2.77m x 2.06m)

Gym

17' 10" x 14' 11" (5.44m x 4.55m)

Landing

Bedroom 1

23' x 11' 2" (7.01m x 3.40m)

En Suite

Bedroom 2

13' 1" x 9' 7" (3.99m x 2.92m)

Bedroom 3

9' 7" x 8' 8" (2.92m x 2.64m)

Bedroom 4

9' x 9' (2.74m x 2.74m)

Bedroom 5

11' 9" x 10' 1" (3.58m x 3.07m)

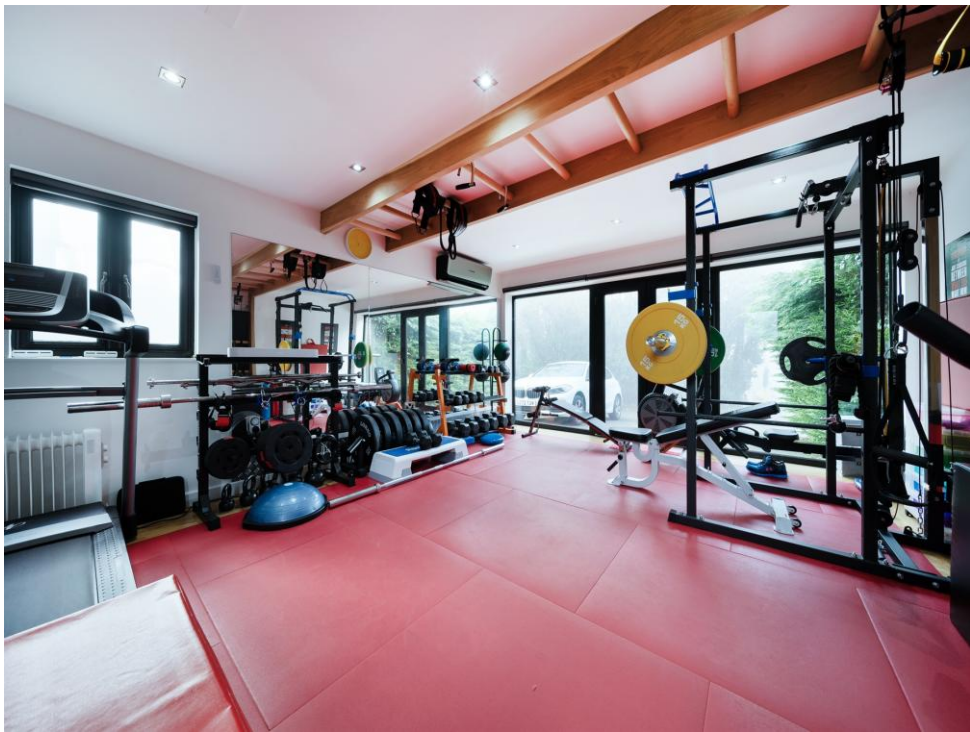
Family Bathroom

Garden

Office

13' 1" x 9' 8" (3.99m x 2.95m)







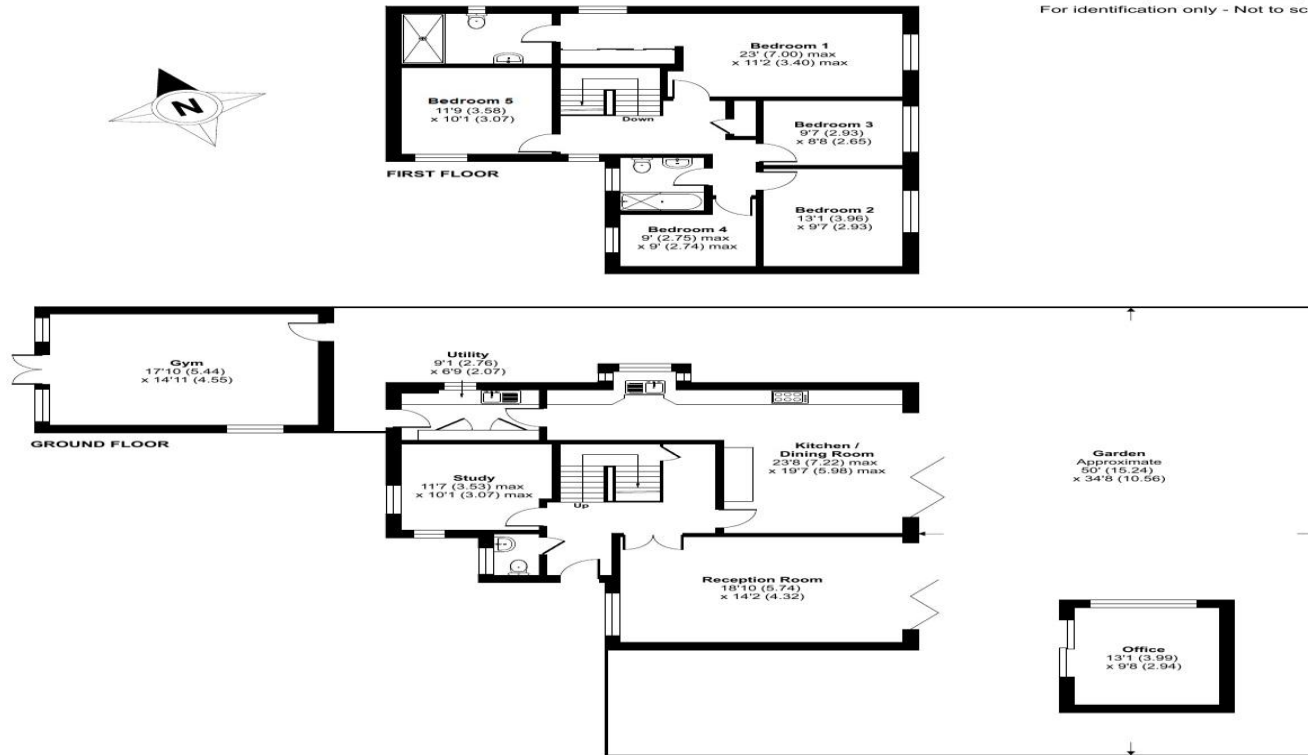
Rivendell, Marsh Green Road, Marsh Green, Edenbridge, TN8

Approximate Area = 1885 sq ft / 175.1 sq m

Outbuilding = 392 sq ft / 36.4 sq m

Total = 2277 sq ft / 211.5 sq m

For identification only - Not to scale



Floor plan produced in accordance with RICS Property Measurement 2nd Edition, incorporating International Property Measurement Standards (IPMS2 Residential). © nichecom 2026. Produced for Flyp Homes Limited. REF: 1397870

To view this property please contact Connells on

T 01342 325 911
E eastgrinstead@connells.co.uk

90 London Road
EAST GRINSTEAD RH19 1EP

EPC Rating: C Council Tax
Band: G

Tenure: Freehold

view this property online [connells.co.uk/Property/EGR405530](https://www.connells.co.uk/Property/EGR405530)



1. MONEY LAUNDERING REGULATIONS Intending purchasers will be asked to produce identification documentation at a later stage and we would ask for your co-operation in order that there will be no delay in agreeing the sale. 2. These particulars do not constitute part or all of an offer or contract. 3. The measurements indicated are supplied for guidance only and as such must be considered incorrect. Potential buyers are advised to recheck measurements before committing to any expense. 4. We have not tested any apparatus, equipment, fixtures, fittings or services and it is in the buyers interest to check the working condition of any appliances.

Connells Residential is registered in England and Wales under company number 1489613, Registered Office is Cumbria House, 16-20 Hockliffe Street, Leighton Buzzard, Bedfordshire, LU7 1GN. VAT Registration Number is 500 2481 05.

See all our properties at www.connells.co.uk | www.rightmove.co.uk | www.zoopla.co.uk

Property Ref: EGR405530 - 0004