



Onslow Gardens  
South Kensington, SW7

CHESTERTONS





Set on one of South Kensington's most sought-after garden squares, this beautifully designed studio apartment is positioned on the raised ground floor of an elegant period building on Onslow Gardens.

The property has been refurbished with meticulous attention to detail and thoughtfully configured to maximise both space and functionality. Owing to the 3.74m ceilings, there is a well-executed mezzanine sleeping area with excellent built-in storage, allowing for clear separation between living and sleeping areas. The main reception space benefits from impressive ceiling heights, wooden flooring and a modern kitchen with high end appliances. There is a beautiful bathroom and plenty of storage space throughout, creating a bright and stylish living environment.

The apartment further benefits from access to the communal gardens and is superbly located for the amenities, restaurants and transport links of South Kensington.

Please note the property is held on a short lease of approximately 22 years remaining and is therefore suitable for cash buyers only.

Offers in excess of £350,000

Score	Energy rating	Current	Potential
92+	A		
81-91	B		
69-80	C		79 C
55-68	D	58 D	
39-54	E		
21-38	F		
1-20	G		

**Tenure:** Leasehold 22 years remaining  
**Service Charge:** £4,300 p.a. + £500 p.a. for communal gardens  
**Ground Rent:** £1,688 p.a.  
**Local Authority:** Royal Borough of Kensington & Chelsea  
**Council Tax Band:** D

*Chestertons South Kensington Sales*

44-48 Old Brompton Road  
 London  
 SW7 3DY

southkensington@chestertons.co.uk

020 7589 1234

chestertons.co.uk

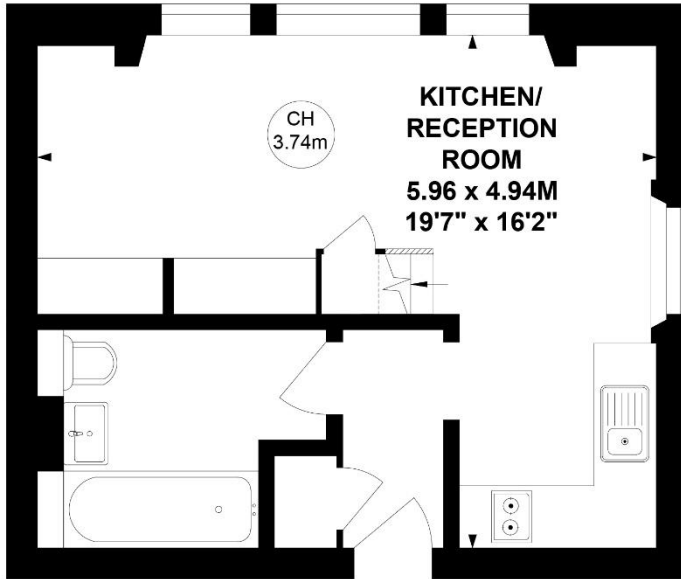
# Onslow Gardens, SW7

Approximate Gross Internal Area

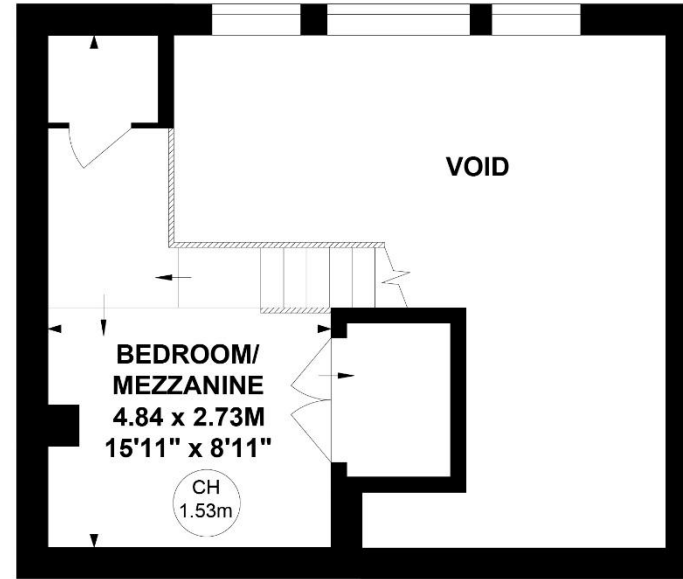
41.60 sq m / 448 sq ft  
(Excluding Void)



Key :  
CH - Ceiling Height



**Raised Ground Floor**



**Mezzanine**

**Not to scale, for guidance only and must not be relied upon as a statement of fact.  
All measurements and areas are approximate only**

