



**Valnay Street, SW17**

£1,200,000

**Dexters**



## Valnay Street, SW17

A truly remarkable and stunning fully extended mid terrace home in the heart of Tooting spanning three storeys with a superb open-plan kitchen/dining room with access onto a landscaped garden, a double reception room, four generous double bedrooms, three bathrooms, a w/c and a utility room.

Having been lovingly maintained and extended by the current owners, the property welcomes you in via a large and well arranged double reception room furnished with bespoke cabinetry, plantation shutters, solid wooden floors and ample space for seating with a through lounge. To the rear of the home, there is a stunning open-plan fitted kitchen with wall and base units, a breakfast island, integrated appliances and great space for dining with doors opening onto a private garden.

Over the first and top floor, there are four generous double bedrooms with three bathrooms and a separate utility room with the principal bedroom furnished with an en-suite.

Valnay Street is a sought after residential road in the heart of Tooting with it's many shops, bars and restaurants on the doorstep, with Tooting Broadway Underground and Tooting Railway stations also a short stroll away.

### Features

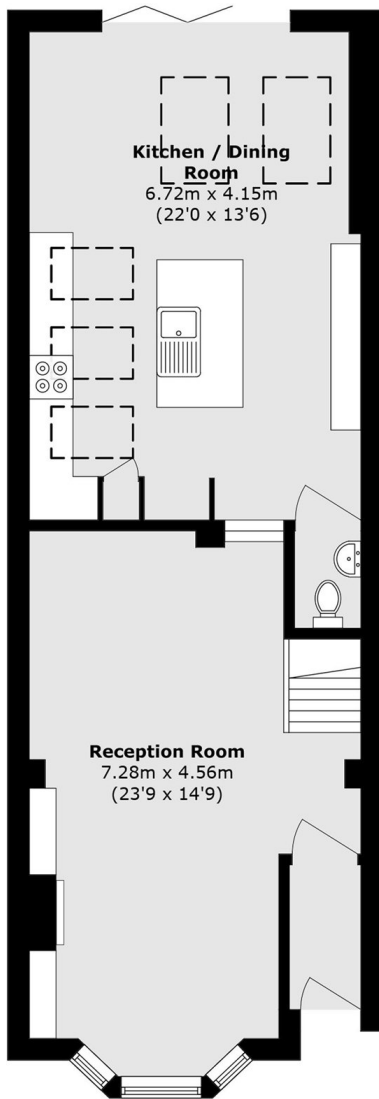
- Extended Home
- Immaculate Interior
- Central Location
- Open-Plan Kitchen
- Double Reception Room
- Four Bedrooms



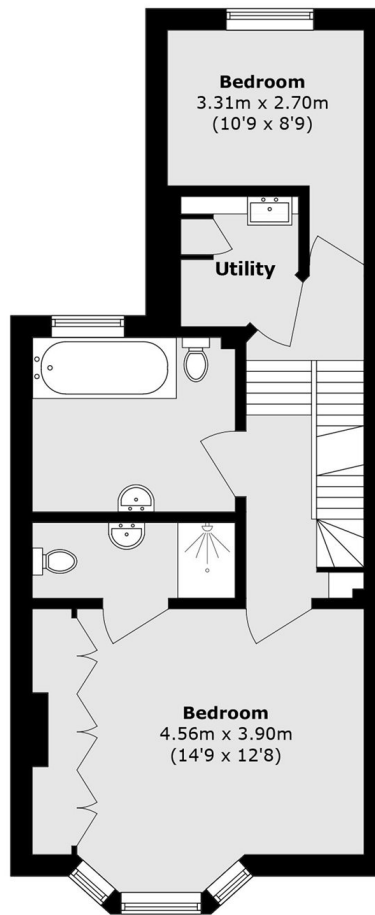




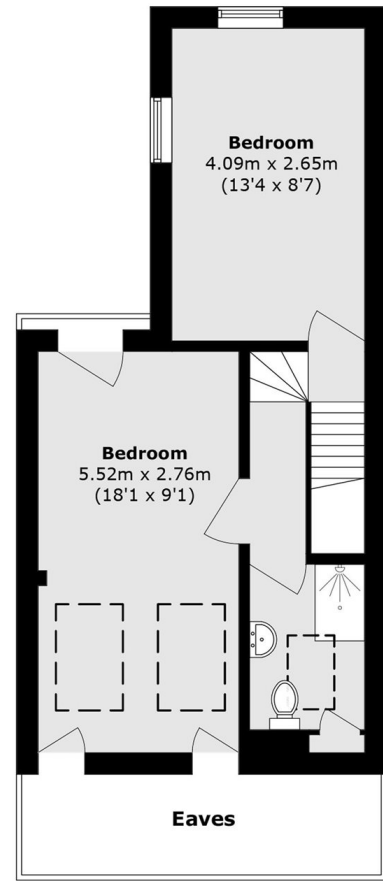
# Valnay Street, London, SW17



**Ground Floor**



**First Floor**



**Second Floor**

Total area (approx.): 145.0 sq. m (1560.8 sq. ft)