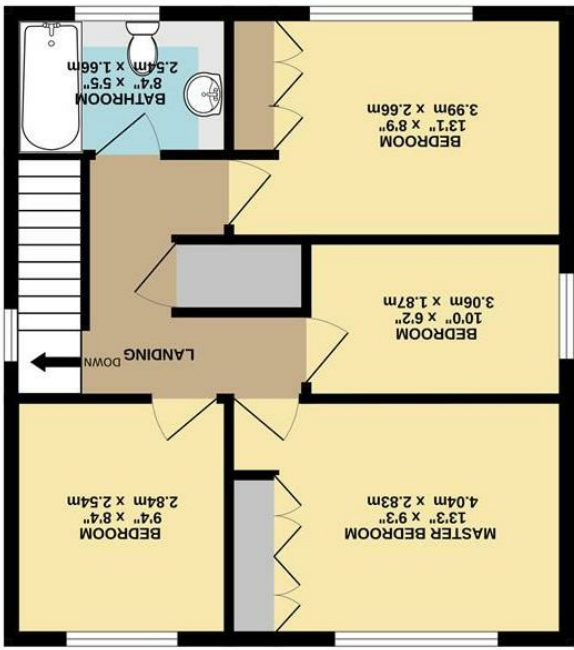


These particulars are believed to be accurate but they are not guaranteed and do not form a contract. Neither Jordan Fishwick nor the vendor or lessor accept any responsibility in respect of these particulars, which are not intended to be statements or representations of fact and any intending purchaser or lessee must satisfy himself by inspection or otherwise as to the correctness of each of the statements contained in these particulars. Any floorplans on this brochure are for illustrative purposes only and are not necessarily to scale.

Whilst every attempt has been made to ensure the accuracy of the floorplan contained here, measurements of doors, windows, rooms and any other items are approximate and no responsibility is taken for any error, omission or mis-statement. This plan is for illustrative purposes only and should be used as such by any prospective purchaser. The services, systems and appliances shown have not been tested and no guarantee as to their operability or efficiency can be given.  
Made with Metropix ©2024



1ST FLOOR

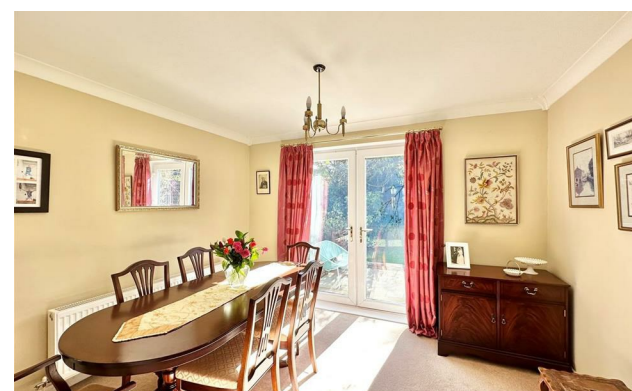


GROUND FLOOR



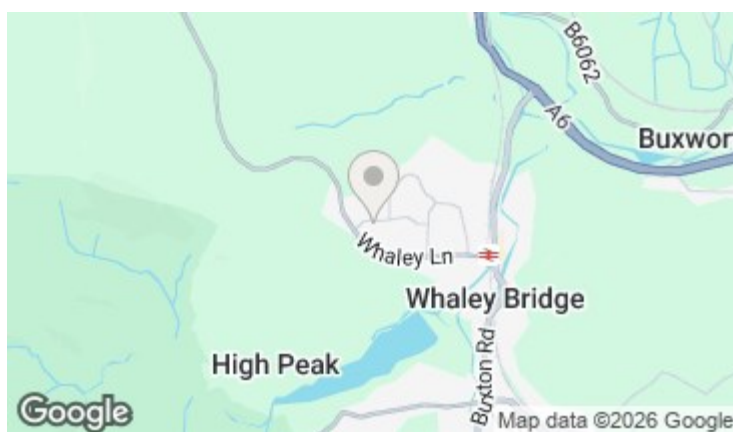
13 Meadowfield, Whaley Bridge, High Peak, SK23 7AX

Guide Price £450,000



### The Property

\*\*\* Guide Price £450,000 to £465,000 \*\*\* Occupying an elevated position within a popular, established residential development in Whaley Bridge, a superbly appointed, detached family home. Offered for sale with no chain, this fabulous property is an ideal family home. Pvc double glazing, gas central heating and comprising: entrance porch, hallway, wc, through living and dining room, fitted kitchen with breakfast room, four first floor bedrooms and a family bathroom. Lots of storage, an attached garage, Indian stone paved double driveway and enclosed private gardens. Viewing highly recommended. \*\*\*NO ONWARD CHAIN\*\*\*



- Well Appointed Family Home
- Detached Four Bedrooms
- Excellent Position
- Sought After Location
- Balanced Accommodation
- Indian Stone Paving
- Double Driveway and Garage
- Enclosed Private Gardens
- No onward Chain
- Guide Price £450,000 to £465,000

Postcode - SK23 7AX  
EPC Rating - C  
Local Authority - High Peak  
Council Tax - D

