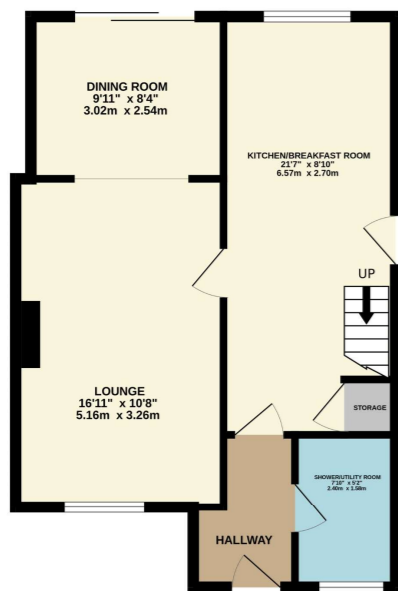
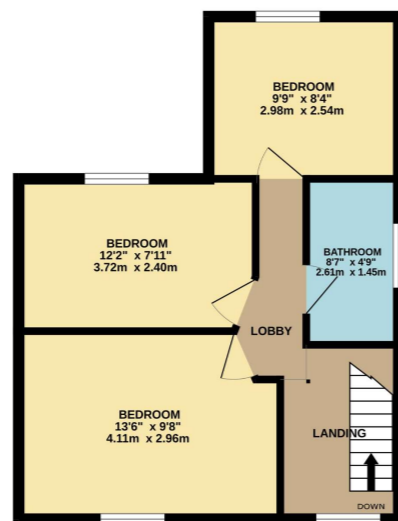


GROUND FLOOR
528 sq.ft. (49.0 sq.m.) approx.



1ST FLOOR
426 sq.ft. (39.6 sq.m.) approx.



ST JAMES AVENUE WEST
TOTAL FLOOR AREA - 954 sq.ft. (88.6 sq.m.) approx.
Whilst every attempt has been made to ensure the accuracy of the floorplan contained here, measurements of doors, windows, rooms and any other items are approximate and no responsibility is taken for any error, omission or mis-statement. This plan is for illustrative purposes only and should be used as such by any prospective purchaser. The services, systems and appliances shown have not been tested and no guarantee as to their operability or efficiency can be given.
Made with Metropix ©2026

THINKING OF SELLING OR TRYING TO SELL?

- Family Firm Established since 1980
- Extensive Buyer Register
- All Homes Visibly Marketed from Team Agencies in Essex & LONDON
- Accompanied Viewings
- Excellent photography & Floorplans
- Highly Experienced Agency, 1000's successfully SOLD



JOHNCOTTIS ESTATE AGENTS

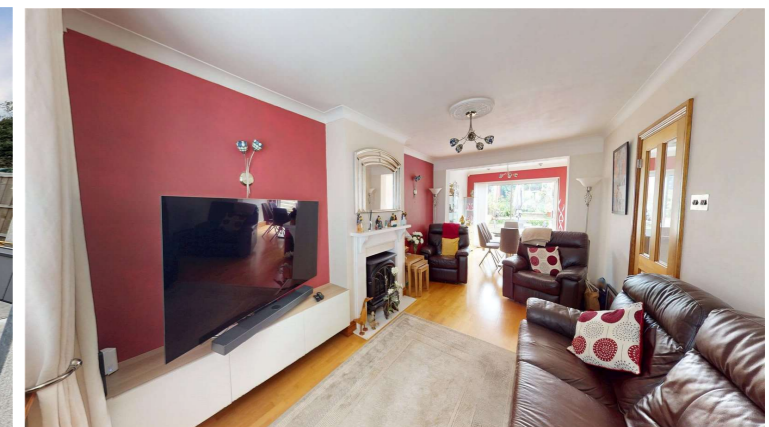
SELL YOUR HOME WITH US >

SMALL ENOUGH TO CARE BUT BIG ENOUGH TO SUCCEED IN SELLING YOUR HOME



St. James Avenue West, Stanford-Le-Hope, SS17 7BB | Offers Over £395,000

- Dual level Extended 3 Bedroom Semi detached House
- Beautifully presented 90ft approx Garden
- Garage/Parking included
- Ground Floor Shower room and First floor Bath/shower room



19 Kings Parade, King Street, Stanford-le-Hope, Essex, SS17 0HP

01375 676655 sales@johncottis.co.uk

www.johncottis.co.uk

Registered Proprietors Temp-Green LTD., Trading as John Cottis & Co. Registered in England No. 1534107
Registered Office: 21 Lodge Lane, Grays, Essex, RM17 5RY

The Consumer Protection from Unfair Trading Regulations 2008 (CPRs). These details are for guidance only and complete accuracy cannot be guaranteed. If there is any point, which is of particular importance, verification should be obtained. They do not constitute a contract or part of a contract. All measurements are approximate. No guarantee can be given with regard to planning permissions or fitness for purpose. No apparatus, equipment, fixture or fitting has been tested. Items shown in photographs are NOT necessarily included. Interested Parties are advised to check availability and make an appointment to view before travelling to see a property.

Extended Semi-detached 3-bedroom house with modern, stylish, and spacious interiors. This bright and homely property boasts a 90ft garden, Gf Shower room + FF Bath/shower room, Kitchen breakfast, lounge/dining. Parking, Garage. Perfect for a family looking for an affordable and accessible home.

Introducing this charming and generously sized 3 bedroom semi-detached house located in a sought-after neighbourhood well positioned for schools, shops and public transport. The Ground floor includes Lounge with open plan design to rear Dining room, very impressive modern Kitchen Breakfast room and a Ground floor Shower room/utility. The first floor impressive also with 3 great bedrooms and a Stylish bath/shower room. The beautifully well-maintained garden measuring approx 90' provides the perfect space for outdoor gatherings or simply enjoying some fresh air. Perfect for a family looking for an affordable and accessible home.

Click on our 360 Virtual tour for instant visual access of layout and home whilst booking your viewing.

Dont miss out on this highly impressive home, offered with no onward chain.

