

Burlington House

Park West • West Drayton • UB7 9FE

PCM: £1,700 PCM



coopers
est 1986



A modern and contemporary TWO DOUBLE BEDROOM luxury Apartment is situated in a private development with concierge and Gymnasium. Located within a short walk to West Drayton Train station and high street. Heathrow, The M4 and the M25 are just a few minutes drive. Accommodation; Two bedrooms (Master with En-suite), Large lounge with doors leading to large terrace area, Fully fitted kitchen with appliances. Benefits; Double glazing, Entry-phone system, Beautiful communal gardens, Parking.

FURNISHED

Concierge

Gymnasium

Ground Floor

Allocated Parking

Close To West Drayton Station

Easy Access To Heathrow Airport

Communal Gardens

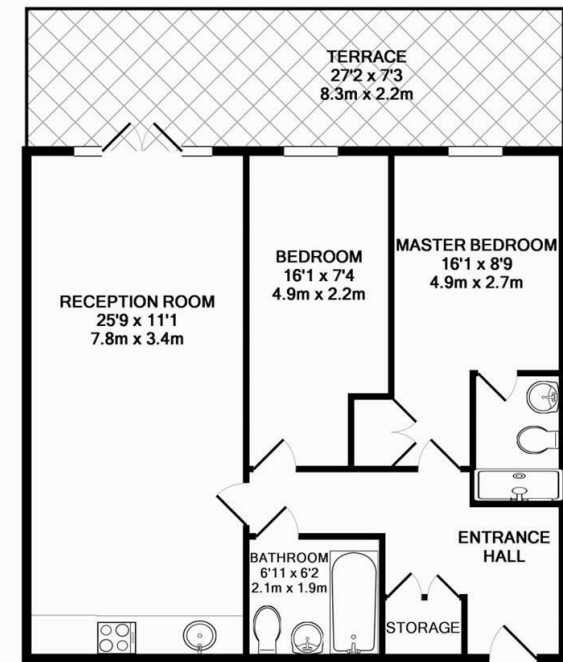
Close To Stockley Business Park

Local Amenities

Council Tax Band C

Available Date

7th August 2026



TOTAL APPROX. FLOOR AREA 700 SQ.FT. (65.0 SQ.M.)

Whilst every attempt has been made to ensure the accuracy of the floor plan contained here, measurements of doors, windows, rooms and any other items are approximate and no responsibility is taken for any error, omission, or mis-statement. This plan is for illustrative purposes only and should be used as such by any prospective purchaser. The services, systems and appliances shown have not been tested and no guarantee as to their operability or efficiency can be given
Made with Metropix ©2015



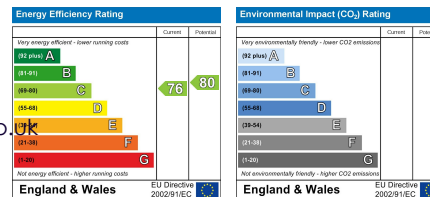
coopers
est 1986

01895 230 103

**109 Hillingdon Hill, Hillingdon Village,
Middlesex, UB10 0JQ**

propertymanagement@coopersresidential.co.uk

CoopersResidential.co.uk



Important Notice: These particulars, whilst believed to be accurate are set out as a general outline only for guidance and do not constitute any part of an offer or contract. Intending purchasers should not rely on them as statements or representation of fact, but must satisfy themselves by inspection or otherwise has the authority to make or give any representation or warranty in respect of the property.