



Knollys Road, SW16  
£565,000

**Dexters**



## Knollys Road, SW16

This charming period conversion offers over 796 sq ft of thoughtfully designed living space, featuring two generous double bedrooms and a bright, open plan layout ideal for modern living. The property boasts a contemporary, fully fitted kitchen and opens onto a private garden split over two levels, accessed via bi-fold doors. The bathroom is finished to a high standard and includes a spacious walk-in double shower. Additional benefits include secure bicycle storage and private off-street motorcycle parking.

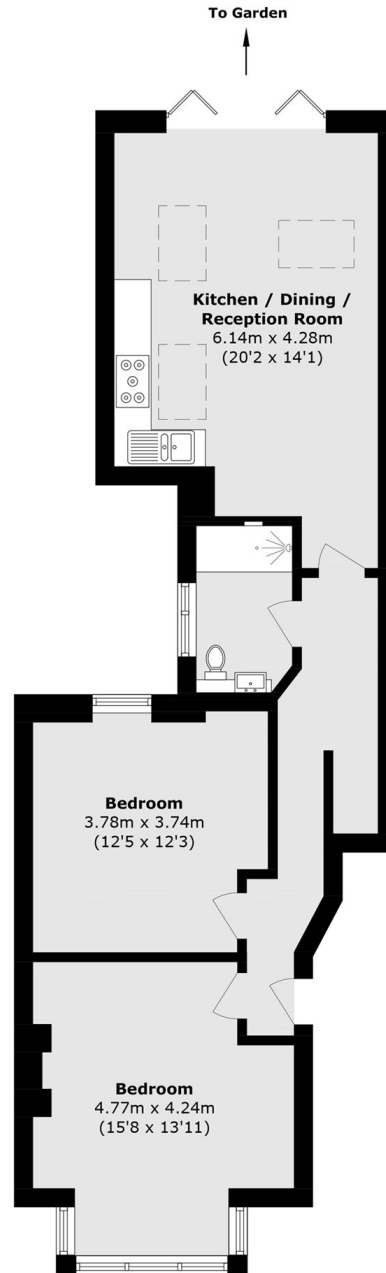
Ideally located on Knollys Road, the property is within easy reach of both Streatham town centre and Norwood High Street, offering a wide range of shops, bars, restaurants, and leisure facilities. Excellent transport links are available nearby, with Tulse Hill, West Norwood and Streatham Hill mainline stations providing convenient access into central London.

### Features

- Two Double Bedrooms
- Period Conversion
- Modern Kitchen
- Over 796 Sq Ft
- Parking
- Private Garden



# Knollys Road, London, SW16



Total area (approx.): 74.0 sq. m (796.5 sq. ft)