



Vesta Road, SE4

£575,000

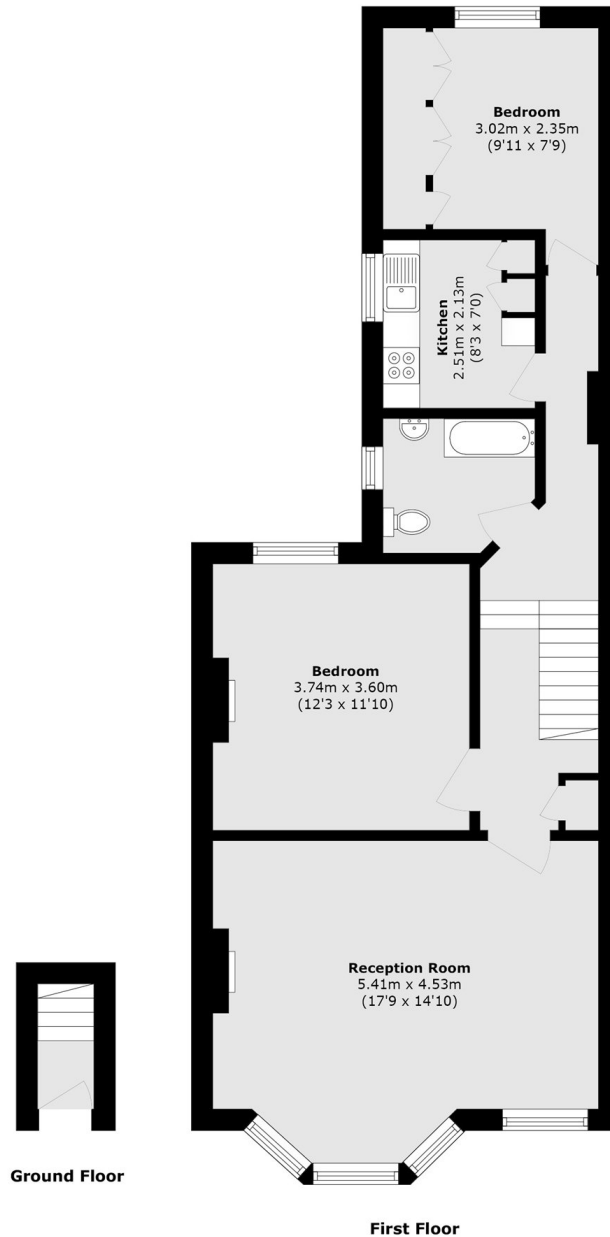
Charming two bedroom period flat on sought-after Vesta Road, SE4 .Boasting elegant high ceilings and beautiful original features throughout. Bright, well-proportioned living spaces perfect for modern living with a Victorian charm. Private section of garden for your own peaceful outdoor retreat.

Quietly positioned between Brockley and New Cross, Vesta Road enjoys a prime SE4 setting. Within easy reach of Brockley Station and New Cross Gate Station for swift links into the City. Surrounded by green open spaces including Blythe Hill Fields and Hilly Fields.

Features

- Two Bedrooms
- Private Section Of Garden
- Freehold
- Period Features
- Close To Stations

Vesta Road, London, SE4



Total area (approx.): 67.1 sq. m (722.2 sq. ft)