



**Guide Price**  
**£210,000**

**Leasehold**

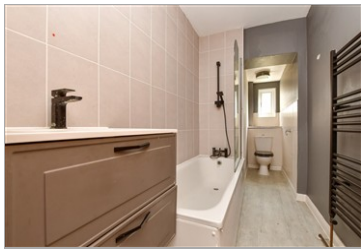
1x  1x  1x 

**Clyde Road, Croydon,  
Surrey, CR0**

**OVER 60?**

Secure this property  
for up to **59% less!**

**cubitt & west**  
Helping you move forwards



## Main features

- Private entrance
- Generous double bedroom
- Bright and airy open-plan kitchen/reception
- Direct access to a large private garden
- Excellent transport links via East Croydon station & tram stops

## Accommodation

### GROUND FLOOR

Hall

Lounge/Kitchen/Diner: 18'11 x 10'11  
(5.77m x 3.33m)

Bedroom: 14'10 x 12'6 (4.52m x 3.81m)

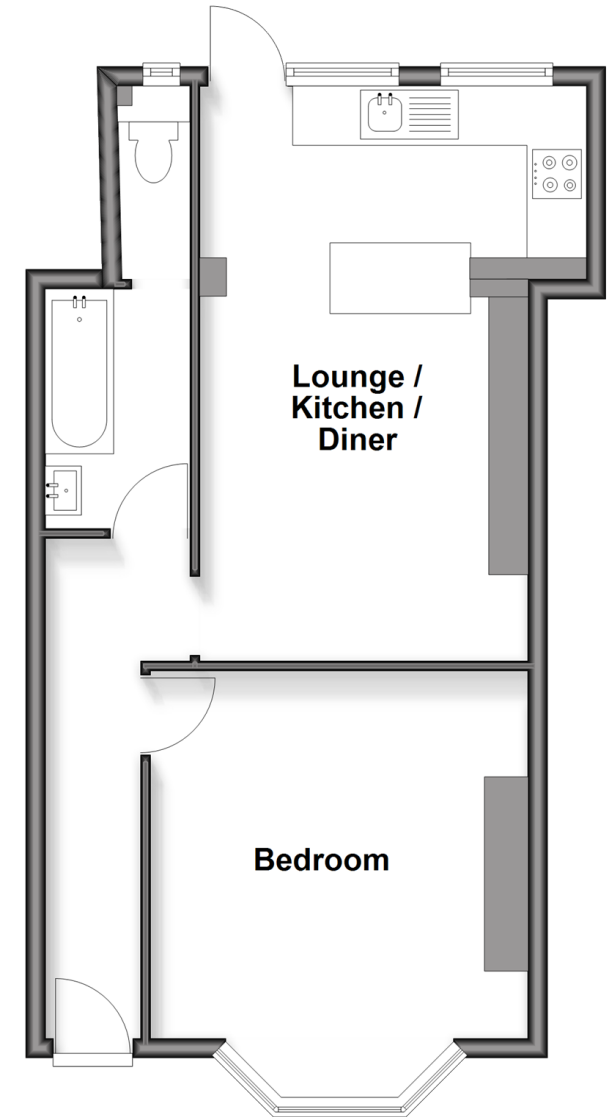
Bathroom

### OUTSIDE

Rear Garden

## Ground Floor

Approx. 47.9 sq. metres (515.4 sq. feet)



Call Shirley - 020 8654 3037 ■ [cubittandwest.co.uk](http://cubittandwest.co.uk)

- Legal advice should be taken to verify fixtures/fittings, planning, alterations and/or lease details
- Appliances & services are untested, dimensions are approximate and floor plans are not to scale
- Through a Homewise Home For Life Plan people aged 60+ can secure this property for up to 59% less, by purchasing a Lifetime Lease



21712032/20260210/SR/PH