



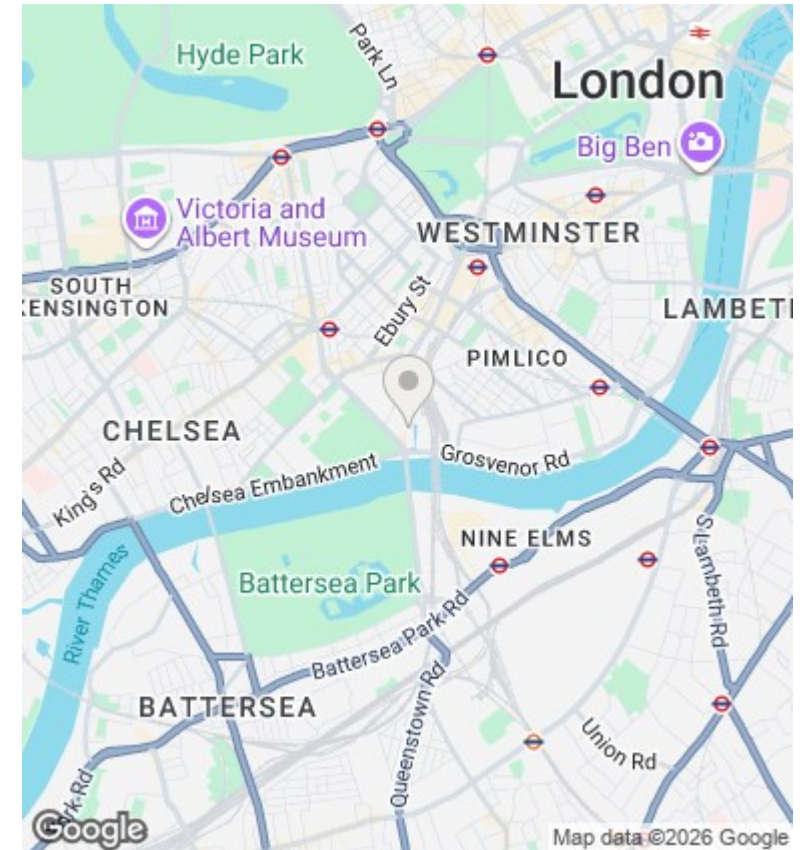
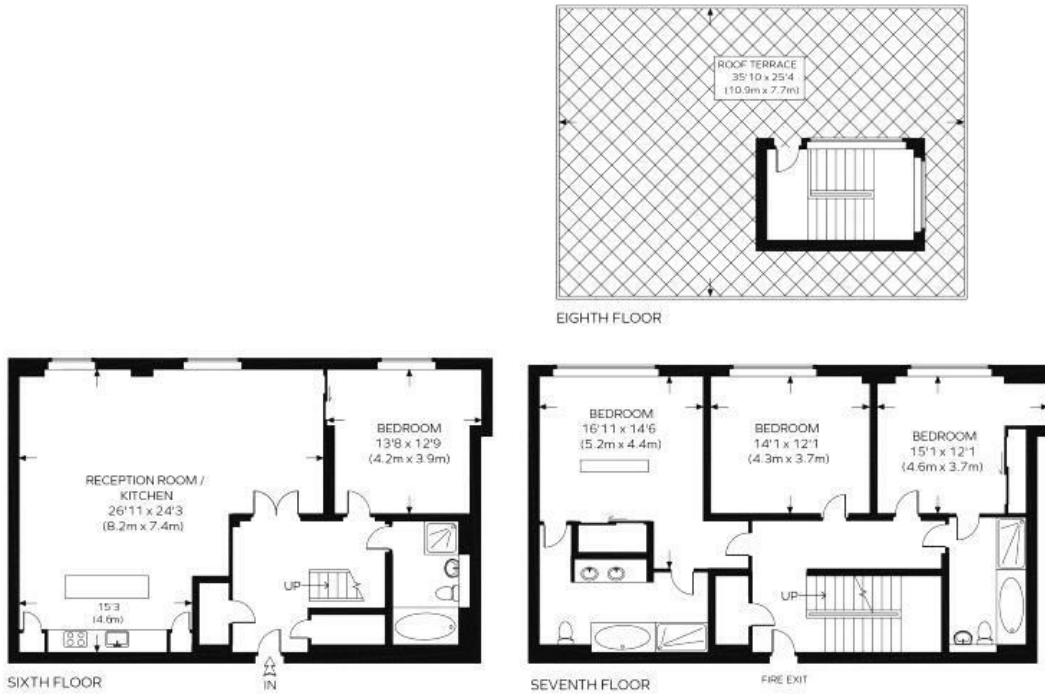
Hirst Court, Grosvenor Waterside, Gatliff Road, Sloane Square SW1W 8QD

£3,200,000

- 24H CONCIERGE
- 4 BEDROOM 3 BATHROOMS
- AIR COOLING AND UNDERFLOOR HEATING
- ONSITE RESTAURANT AND FOOD SHOP
- PENTHOUSE
- GYM AND SPA
- WALKING DISTANCE TO SLOANE SQUARE , KINGS ROAD AND KNIGHTSBRIDGE
- PRIVATE TERRACE WITH RIVER VIEWS
- ALLOCATED PARKING SPACE
- MOMNETS AWAY FROM BATTERSEA PARK

HIRST COURT

Approximate Gross Internal Area = 2164 sq. ft. (201 sq. m.)



Viewings

Viewings by arrangement only.
Call 02077225022 to make an appointment.

Council Tax Band

B

EPC Rating:

B

| Energy Efficiency Rating | | Current | Potential |
|---|--|----------------------------|-----------|
| Very energy efficient - lower running costs | | | |
| (92 plus) A | | | |
| (81-91) B | | 81 | 81 |
| (69-80) C | | | |
| (55-68) D | | | |
| (39-54) E | | | |
| (21-38) F | | | |
| (1-20) G | | | |
| Not energy efficient - higher running costs | | | |
| England & Wales | | EU Directive 2002/91/EC | |