



Ormesby Road, Badersfield NR10 5LB

welcome to

Ormesby Road, Badersfield

Boasting panoramic field views and a serene location, this two-bedroom ground floor residence offers the perfect blend of tranquility and practicality. Ideally suited for first time buyers, the home features designated parking, guest spaces, and handy outdoor storage. Book your viewing today!



Enjoy peaceful field views from this stylishly updated two bedroom ground floor apartment. Highlights include a bright, dual-aspect lounge, a contemporary kitchen-diner, and two spacious double bedrooms.

Complete with convenient parking and access to leafy communal grounds, this property is move-in ready.

Nestled within a welcoming community, this home offers the perfect balance of rural serenity and modern convenience. With nature trails just steps away, it's an ideal sanctuary for first-time buyers or downsizers eager to experience the timeless appeal of Badersfield. The charming market towns of North Walsham and Aylsham are just four miles away, home to a variety of shops and restaurants. Whether heading to work or exploring further afield, Worstead Railway Station is a convenient 2.7-mile drive, keeping you well-connected to Norwich and beyond.

Don't miss out - Call the office to book your viewing today!

Lounge

Double-glazed dual windows to rear and side aspect, carpeted flooring.

Kitchen

Fitted kitchen with a range of wall and base units with work surfaces over, double-glazed windows to side aspect, stainless steel sink/drainage, space for fridge/freezer, larder, vinyl flooring.

Landing

Storage cupboard, carpeted flooring.

Bedroom One

Double-glazed window to rear window, electric storage heater, carpeted flooring.

Bedroom Two

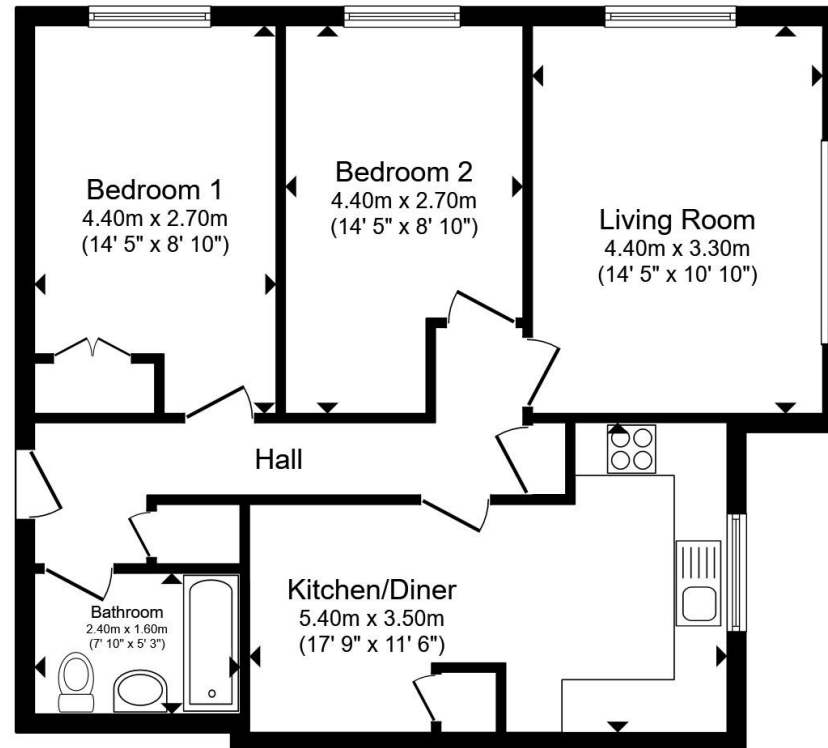
Double-glazed window to rear aspect, radiator, built in wardrobes.

Bathroom

WC, wash hand basin, bath with shower over, partially tiled, vinyl flooring.

Outside

Access to communal gardens, allocated parking space for one car, shed.



Total floor area 67.2 m² (724 sq.ft.) approx

This floor plan is for illustrative purposes only. It is not drawn to scale. Any measurements, floor areas (including any total floor area), openings and orientation are approximate. No details are guaranteed, they cannot be relied upon for any purpose and they do not form part of any agreement. No liability is taken for any error, omission or misstatement. A party must rely upon its own inspection(s). Powered by www.propertybox.io



view this property online williambrown.co.uk/Property/NWM110135



welcome to

Ormesby Road, Badersfield Norwich

- Secure Communal Entrance
- Field Views
- Kitchen Diner
- Two Double Bedrooms
- Allocated Parking
- Storage Shed

Tenure: Leasehold EPC Rating: D

Council Tax Band: A Service Charge: 3456.00

Ground Rent: Ask Agent

This is a Leasehold property. We are awaiting further details about the Term of the lease. For further information please contact the branch. Please note additional fees could be incurred for items such as Leasehold packs.

£130,000



Please note the marker reflects the postcode not the actual property

view this property online williamhbrown.co.uk/Property/NWM110135



Property Ref:
NWM110135 - 0003

1. MONEY LAUNDERING REGULATIONS Intending purchasers will be asked to produce identification documentation at a later stage and we would ask for your co-operation in order that there is no delay in agreeing the sale. 2. These particulars do not constitute part or all of an offer or contract. 3. The measurements indicated are supplied for guidance only and as such must be considered incorrect. Potential buyers are advised to recheck measurements before committing to any expense. 4. We have not tested any apparatus, equipment, fixtures or services and it is in the buyers interest to check the working condition of any appliances. 5. Where an EPC, or a Home Report (Scotland only) is held for this property, it is available for inspection at the branch by appointment. If you require a printed version of a Home Report, you will need to pay a reasonable production charge reflecting printing and other costs. 6. We are not able to offer an opinion either written or verbal on the content of these reports and this must be obtained from your legal representative. 7. Whilst we take care in preparing these reports, a buyer should ensure that his/her legal representative confirms as soon as possible all matters relating to title including the extent and boundaries of the property and other important matters before exchange of contracts.

William H Brown is a trading name of Sequence (UK) Limited which is registered in England and Wales under company number 4268443, Registered Office is Cumbria House, 16-20 Hockliffe Street, Leighton Buzzard, Bedfordshire, LU7 1GN. VAT Registration Number is 500 2481 05.


william h brown



01692 402861



NorthWalsham@williamhbrown.co.uk



16 Market Street, NORTH WALSHAM, Norfolk,
NR28 9BZ



williamhbrown.co.uk