

High Street

Northwood • • HA6 1EB

Asking Price: £550,000



coopers
est 1986

High Street

Northwood • • HA6 1EB

Situated in a highly desirable neighbourhood, this delightful semi detached property originally a Metroland Cottage offers three well-proportioned bedrooms, a spacious lounge and separate dining room area, and a bathroom—ideal for families or professionals alike. The property radiates a welcoming charm, built in 1889 with some original features. Well maintained and wonderfully comfortable. Generous living spaces provide the perfect setting for both relaxing and entertaining.

Family Bathroom

Lounge

Rear Garden

Kitchen

Utility with Shower

Three Bedroom

Dining Room

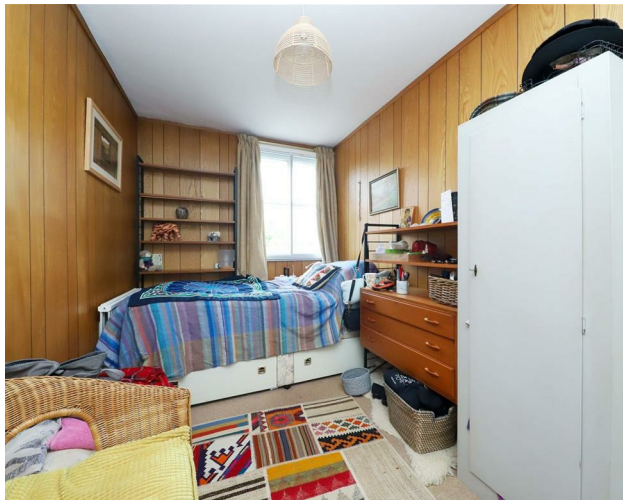
End of Terraced House

Downstairs W/C

919 sq .ft

These particulars are intended as a guide and must not be relied upon as statements of fact. Your attention is drawn to the Important Notice on the last page.





Description

Step through the front door into a welcoming hallway that leads you into a spacious and comfortable living room, perfect for relaxing or entertaining guests. Moving through, you enter a generously sized dining room that provides a great setting for family meals or dinner parties. At the rear of the home is a kitchen with direct access to a convenient Utility room with Shower, adding extra practicality to everyday living.

Upstairs, the first floor features three bedrooms. The principal bedroom spans the full width of the property, offering a bright and airy retreat with plenty of space. The second bedroom is ideal as a guest room or children's room, while the third room works well as a home office or nursery. A family bathroom completes the upper floor, featuring both bath and shower facilities.

This thoughtfully laid-out home combines character and functionality, ideal for both families and professionals seeking comfort and convenience.

Outside

The exterior of the property features a charming front garden filled with a variety of plants and shrubs, adding to its welcoming kerb appeal. From the front there is also a communal passageway to the back garden area. To the rear, a notably long garden offers fantastic potential—whether for landscaping, outdoor entertaining, or creating your own green haven.

Location

Ideally positioned near a range of local amenities, well-regarded schools, and excellent transport connections, this property presents an exceptional lifestyle opportunity. Whether you're a family or a professional, this inviting home is ready to welcome its next owners.



Schools:

Hillside Infant School 0.3 miles
Frithwood Primary School 0.5 miles
St Helen's School 0.5 miles



Train:

Northwood Station 0.4 miles
Northwood Hills Station 0.5 miles
Pinner Station 1.7 miles



Car:

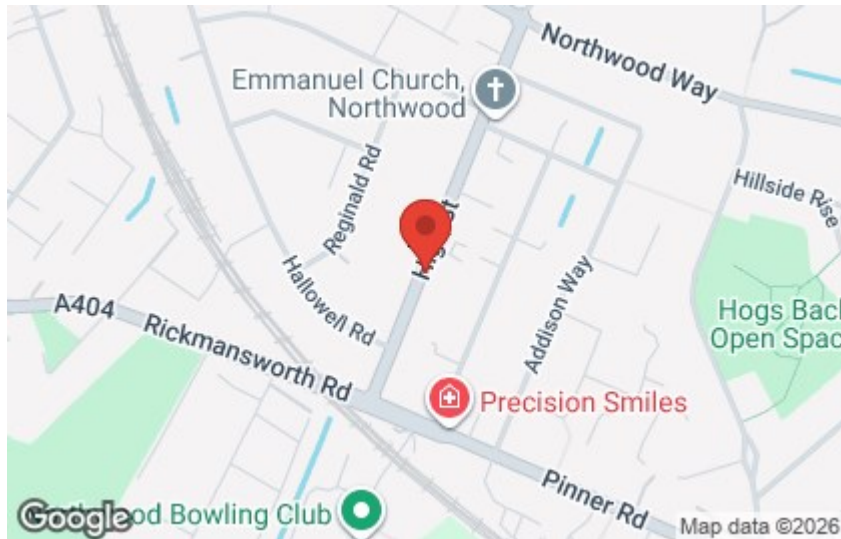
M4, A40, M25, M40



Council Tax Band:

E

(Distances are straight line measurements from centre of postcode)



GROUND FLOOR
483 sq.ft. (44.9 sq.m.) approx.



1ST FLOOR
436 sq.ft. (40.5 sq.m.) approx.



coopers
est 1986

TOTAL FLOOR AREA: 919 sq.ft. (85.4 sq.m.) approx.

Whilst every attempt has been made to ensure the accuracy of the floorplan contained here, measurements of doors, windows, rooms and any other items are approximate and no responsibility is taken for any error, omission or mis-statement. This plan is for illustrative purposes only and should be used as such by any prospective purchaser. The services, systems and appliances shown have not been tested and no guarantee as to their operability or efficiency can be given.
Made with Memphis 12/2025



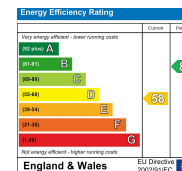
coopers
est 1986

0208 017 6000

18 Bridge Street, Pinner,
Middlesex, HA5 3JF

pinner@coopersresidential.co.uk

CoopersResidential.co.uk



Important Notice: These particulars, whilst believed to be accurate are set out as a general outline only for guidance and do not constitute any part of an offer or contract. Intending purchasers should not rely on them as statements or representation of fact, but must satisfy themselves by inspection or otherwise has the authority to make or give any representation or warranty in respect of the property.