



Glenview Road, Boxmoor, Hemel Hempstead, HP1 1TB

Asking Price £325,000

Located in highly sought after Boxmoor is this character split level flat. Boasting two bedrooms, 12'0 living room, 12'1 x 11'0 modern fitted kitchen/breakfast room, utility room, double glazing, gas central heating, newly fitted bathroom suite, private rear garden and allocated parking. Situated within easy reach of Hemel Hempstead train station and the M1, M25 and A41 road links.

Communal Hall

Front door

Living Room 12'0 x 10'10 (3.66m x 3.30m)



Double glazed window, radiator, TV point and wood flooring.

Kitchen/Breakfast Room 12'1 x 11'1 (3.68m x 3.38m)



Modern fitted kitchen with wall and base units with work surfaces to compliment, tiled splash backs, stainless steel sink with drainer, cupboard housing boiler, gas hob with cooker hood over, electric oven, plumbing for dishwasher, integrated fridge freezer and stairs down to lower ground floor.

Utility Room 7'7 x 2'10 (2.31m x 0.86m)

Double glazed window and plumbing for washing machine.

Landing

Understairs storage cupboard, radiator and double glazed door to garden.

Bedroom One 12'8 x 11'0 (3.86m x 3.35m)



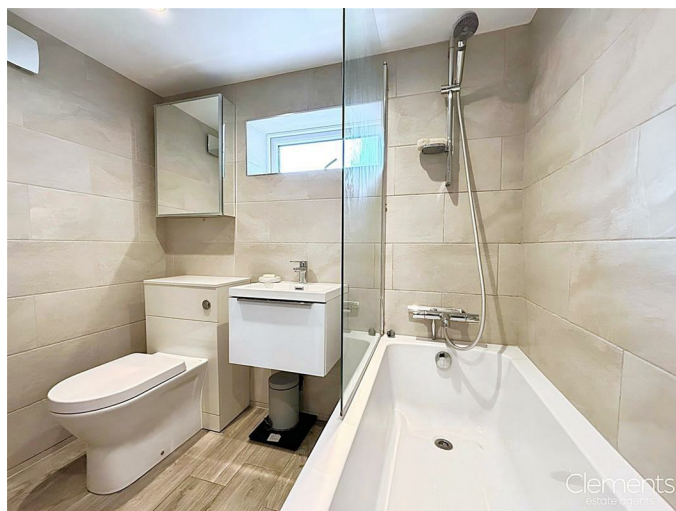
Double glazed window and radiator.

Bedroom Two



Double glazed window and radiator.

Bathroom



Double glazed window, panelled bath with mixer taps and shower over, low level wc,

wash hand basin with vanity unit, fully tiled walls and flooring.

Private Garden

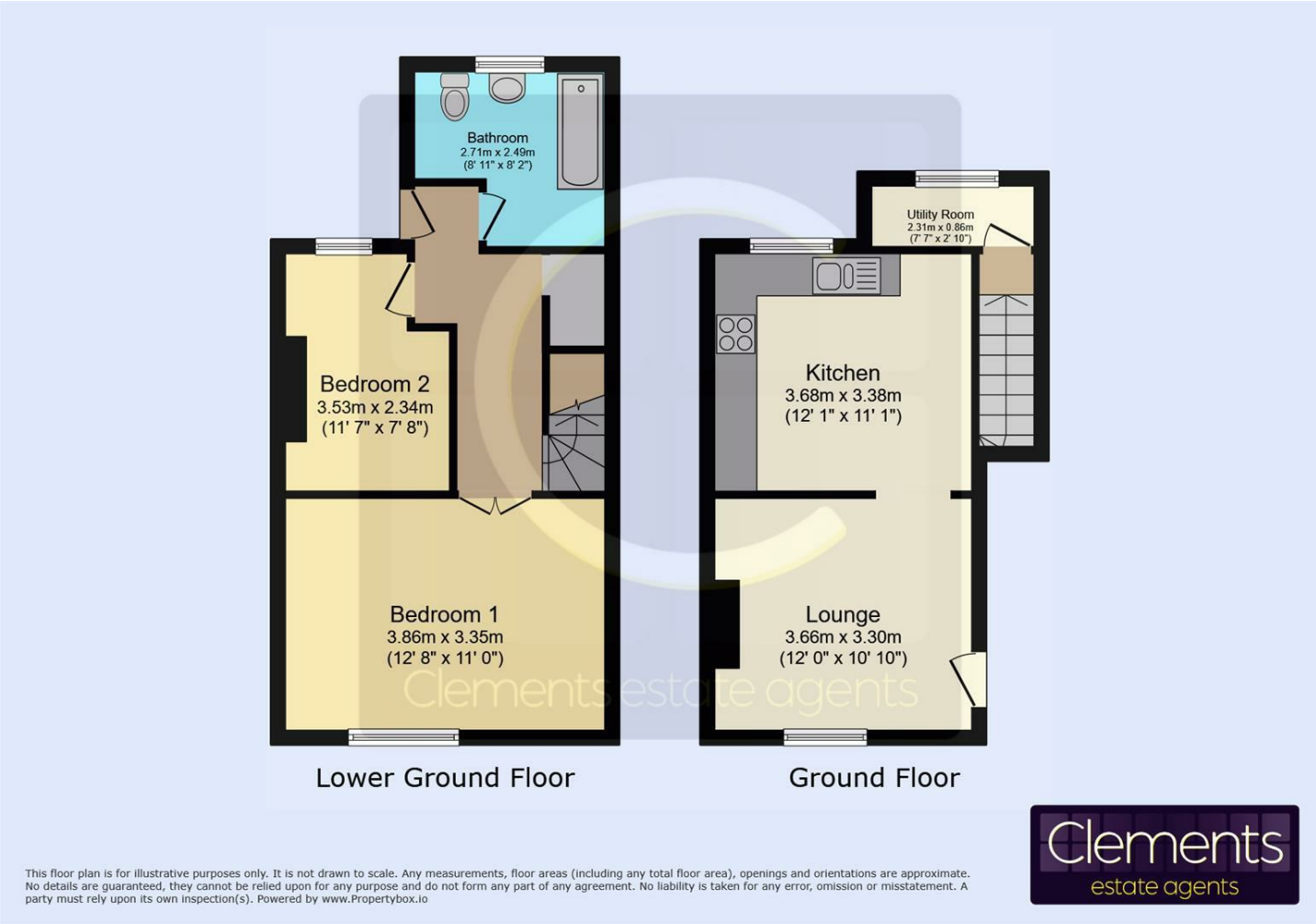


Paved with rear access.

Allocated Parking

One allocated parking space.

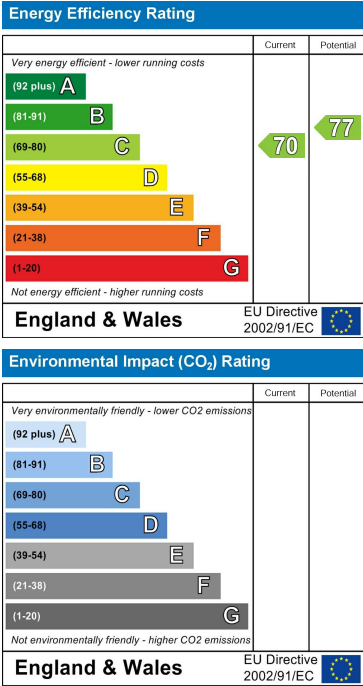
Floor Plan



Area Map



Energy Efficiency Graph



These particulars, whilst believed to be accurate are set out as a general outline only for guidance and do not constitute any part of an offer or contract. Intending purchasers should not rely on them as statements of representation of fact, but must satisfy themselves by inspection or otherwise as to their accuracy. No person in this firms employment has the authority to make or give any representation or warranty in respect of the property.