



Corben Mews, SW8

£2,000 Per calendar month

A stylish one bedroom house, split over two floors. The property comes with a generous open plan reception and integrated kitchen, a modern en suite and a pretty courtyard garden.

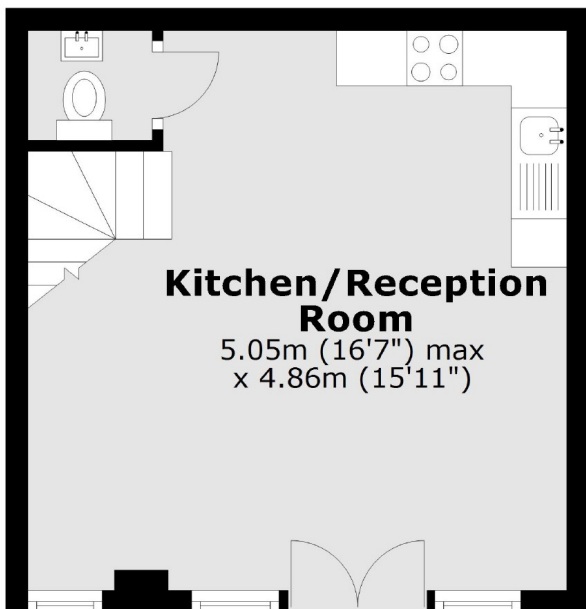
Located just off of Wandsworth Road and close to Clapham Old Town. Along with Clapham Common and Stockwell tubes. With many vibrant cafés and restaurants also nearby.

Features

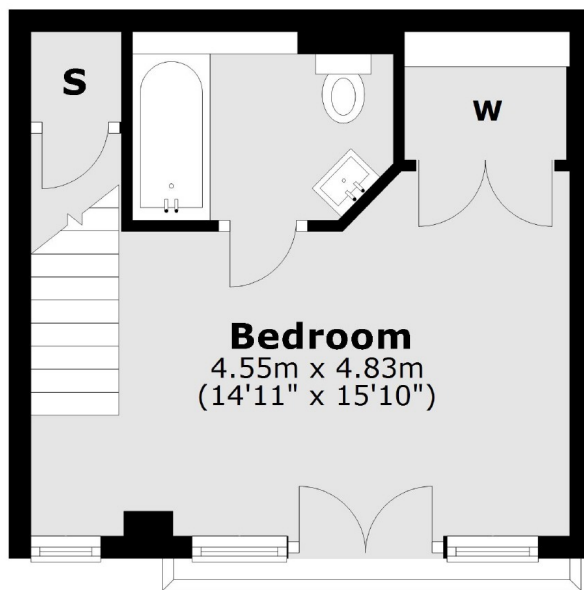
- Mews House
- One Double Bedroom
- Open Plan Reception
- Split-Level
- Modern Interior
- Private Courtyard Garden

Corben Mews, London, SW8

Ground Floor



First Floor



Total area: approx. 46.7 sq. metres (502.3 sq. feet)