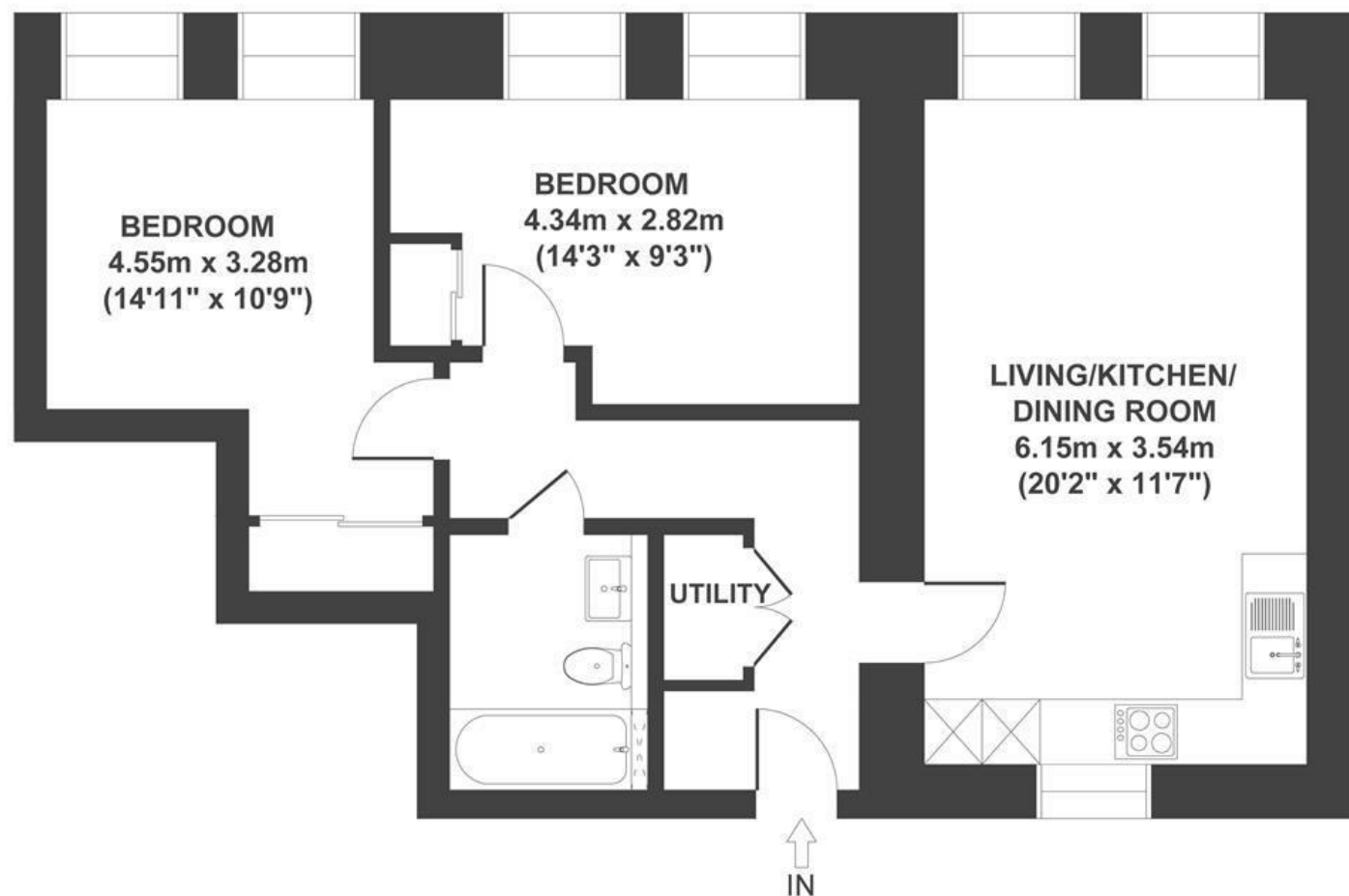


Regent House

BEDMINSTER

APPROXIMATE FLOOR AREA
62 SQM / 668 SQFT



Boardwalk

Lombard Street , BRISTOL

£

£375,000



BS3 1FT

zzz

2 Bedrooms



1 Bathrooms

"This peaceful two-bedroom flat overlooks a beautiful garden, offering a quiet retreat in the heart of the city - allocated parking is a real game changer!"

