

OVER 60?

Secure this property
for up to **59% less!**



Guide Price
£450,000
Share of Freehold

2x  1x  1x 

Ground Floor Flat, Chichester Terrace,
Brighton, East Sussex, BN2

cubitt&west
Helping you move forwards



Main features

- Exclusive Regency apartment
- Direct sea views from your impressive living space
- Beautifully blend of historic charm with modern versatility
- Access to the famous Lewes Crescent enclosures
- Private rear sunny terrace
- Chain free

Accommodation

GROUND FLOOR

Lounge : 26'2 x 17'1 (7.98m x 5.21m)

Kitchen : 14'6 x 13'5 (4.42m x 4.09m)

Bedroom 2: 12'6 x 7'0 (3.81m x 2.14m)

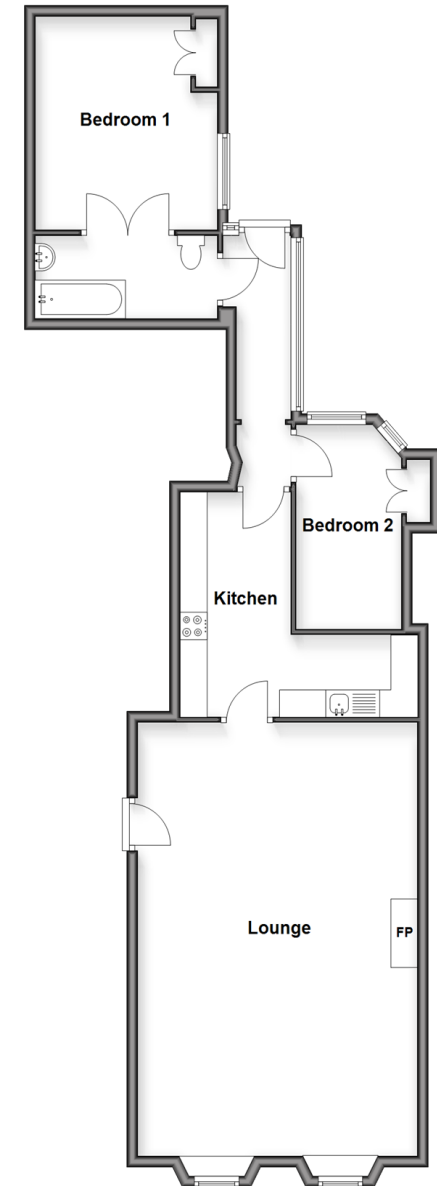
Bathroom

Bedroom 1: 12'9 x 11'3 (3.89m x 3.43m)

OUTSIDE

Private Roof Terrace

Ground Floor
Approx. 86.6 sq. metres (931.9 sq. feet)



Call Lewes Road Brighton - 01273 604377 ■ cubittandwest.co.uk

- Legal advice should be taken to verify fixtures/fittings, planning, alterations and/or lease details
- Appliances & services are untested, dimensions are approximate and floor plans are not to scale
- Through a Homewise Home For Life Plan people aged 60+ can secure this property for up to 50% less, by purchasing a Lifetime Lease.



30510747/20251201/AF/JR