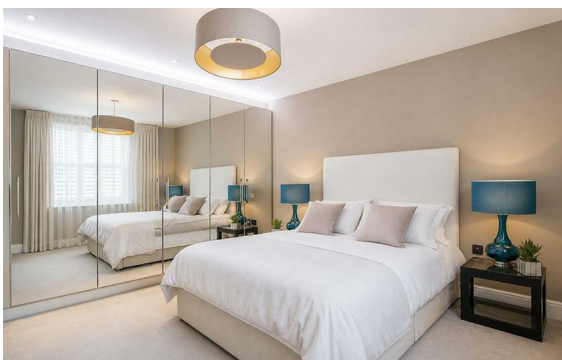


Castlereagh Street, Marylebone, London, W1H

Rent £3,200 Per Month

5 Bed | 5 Bath | 1 Reception

*Please call us on 020 7724 2233 or email us [info@newingtonstates.com](mailto:info@newingtonstates.com) to book a viewing.*



60 Upper Montagu Street

London

W1H 1SN

020 7724 2233

[info@newingtonstates.com](mailto:info@newingtonstates.com)

A recently refurbished five-bedroom apartment offering generous living space and modern finishes in a highly convenient central London setting. The property features a large reception/dining room, a fully fitted kitchen, and five well-proportioned bedrooms. Three en-suite shower rooms are complemented by an additional shower room and guest WC, providing flexible accommodation. A private terrace/balcony and air conditioning throughout enhance comfort and practicality.

Ideally located close to Marble Arch Station and Edgware Road Station, with Hyde Park and Oxford Street nearby.

EPC Rating: C

## Energy Efficiency Rating: C

Agents Note: Whilst every care has been taken to prepare these particulars, they are for guidance purposes only. All measurements are approximate and are for general guidance purposes only and whilst every care has been taken to ensure their accuracy, they should not be relied upon and potential buyers/tenants are advised to recheck the measurements.

<http://www.newingtonstates.com>