

**\*\*BRAND NEW HOME\*\***



# 716 ASHTED WHARF, GLASSWATER LOCKS BELMONT ROW, BIRMINGHAM, B4 7RQ

## £1,750 PCM

### FEATURES

- LUXURY FURNISHINGS THROUGHOUT
- Onsite Gym, Concierge, Library, Games Room & More!
- Dual Aspect- Floor-To-Ceiling Windows
- Zero Deposit Option Available
- Ample Built-In Storage Throughout
- Available NOW
- Uninterrupted 7th Floor Views



# 2 Bedroom Apartment located in Birmingham

**\*\*ZERO DEPOSIT OPTION AVAILABLE - ENQUIRE FOR DETAILS\*\***

Step into modern luxury with this brand-new apartment at Glasswater Locks, a landmark canalside development in the heart of Eastside, Birmingham, just moments from Aston University and Birmingham City University.

Completed in 2025, this stylish two-bedroom, two-bathroom home spans 678 sq ft of carefully considered living space. Every detail has been designed to maximise light and functionality, creating a bright and inviting home you'll love from the moment you arrive.

The apartment is fully furnished with high-quality, interior-designed pieces included in the price, meaning you can move straight in without the hassle of furnishing.

The open plan living and dining area features floor-to-ceiling windows with Juliette balconies, giving you fresh air and a direct connection to the vibrant canalside setting. Two sleek bathrooms finished to a high specification add a touch of everyday luxury.

As a resident, you'll enjoy access to premium on-site facilities including a concierge, state-of-the-art gym, private cinema room, stylish coffee lounge and tranquil library — perfect for work, relaxation or entertaining guests.

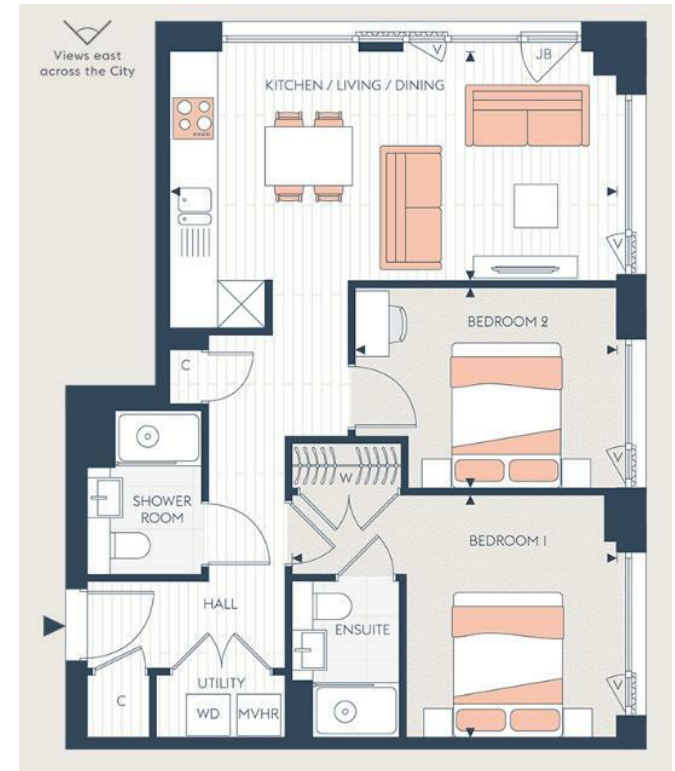
Beyond your apartment, Eastside offers a buzzing lifestyle with cafés, bars and cultural hotspots on your doorstep, while Birmingham city centre is only a short stroll or tram ride away.

Call us on

**0121 667 0343**

[hello@swift-property.co.uk](mailto:hello@swift-property.co.uk)

[www.swift-property.co.uk](http://www.swift-property.co.uk)



Agents Note: Whilst every care has been taken to prepare these particulars, they are for guidance purposes only. All measurements are approximate and are for general guidance purposes only and whilst every care has been taken to ensure their accuracy, they should not be relied upon and potential buyers are advised to recheck the measurements.