



## Royal Crest Avenue, E16

£590,000

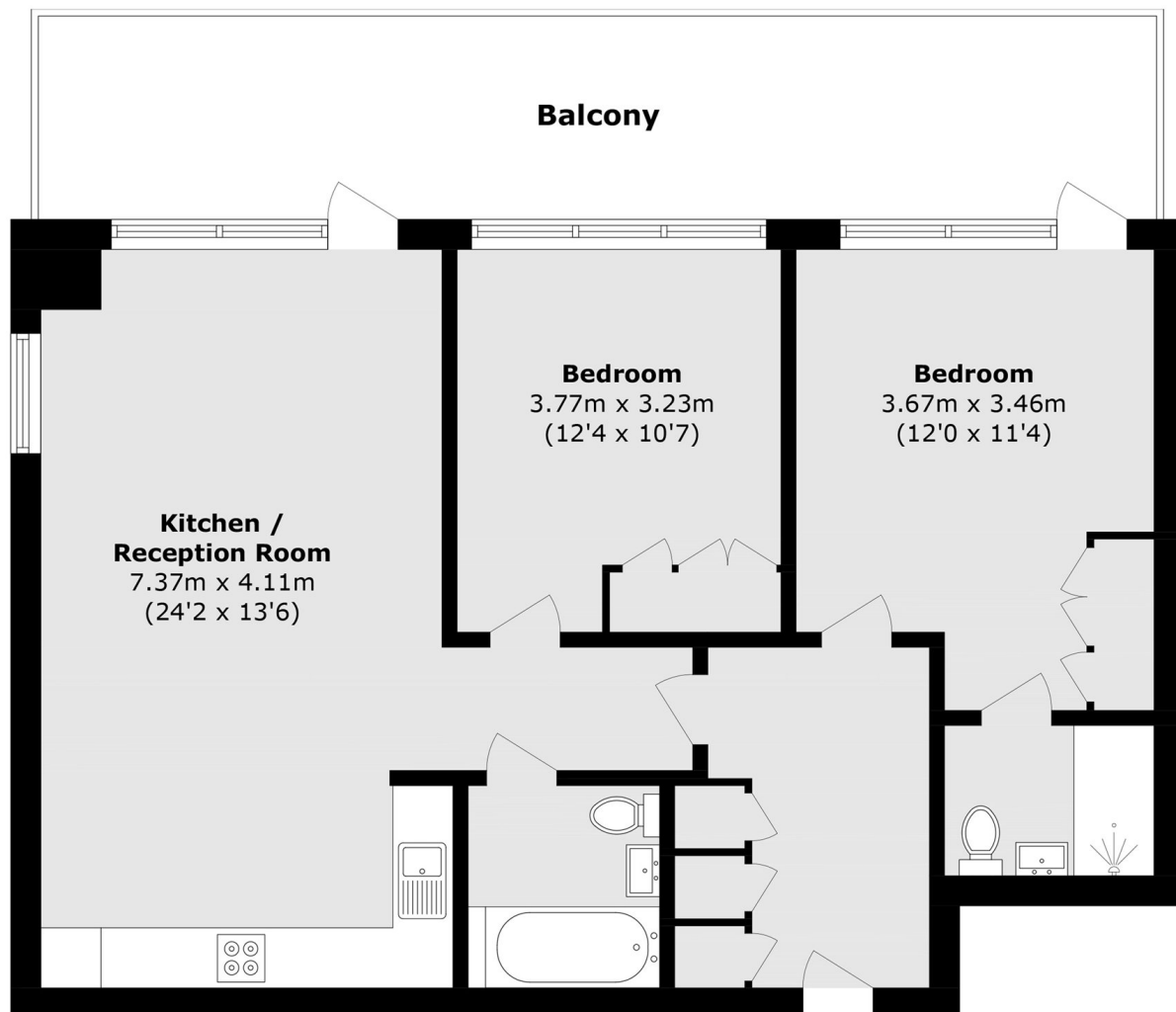
We are pleased to present this two-bedroom apartment. The property boasts floor-to-ceiling windows throughout, allowing an abundance of natural light, a contemporary specification, and fully integrated kitchen appliances. A generous 243 sq ft private terrace is accessible from both the reception room and the principal bedroom. Residents also benefit from a 24-hour concierge service, a fully equipped gym, sauna, steam room, and swimming pool.

Flagship House is conveniently located just 0.2 miles from Pontoon Dock DLR, providing excellent transport links into the City and Canary Wharf. Royal Wharf offers a wide range of local amenities, including restaurants, cafés, and grocery stores. Thames Barrier Park, just 0.1 miles away, provides residents with an expansive green space to enjoy.

### Features

- Private Concierge
- Residents' Leisure Facilities
- Natural Light
- 852 Square Feet
- Large Terrace
- Modern Specification

# Royal Crest Avenue, London, E16



Total area (approx.): 79.2 sq. m (852.5 sq. ft)  
Balcony total (approx.): 22.6 sq. m (243.2 sq. ft)