



5 Ollerton Walk
Corby, NN18 0HR



Simpson West

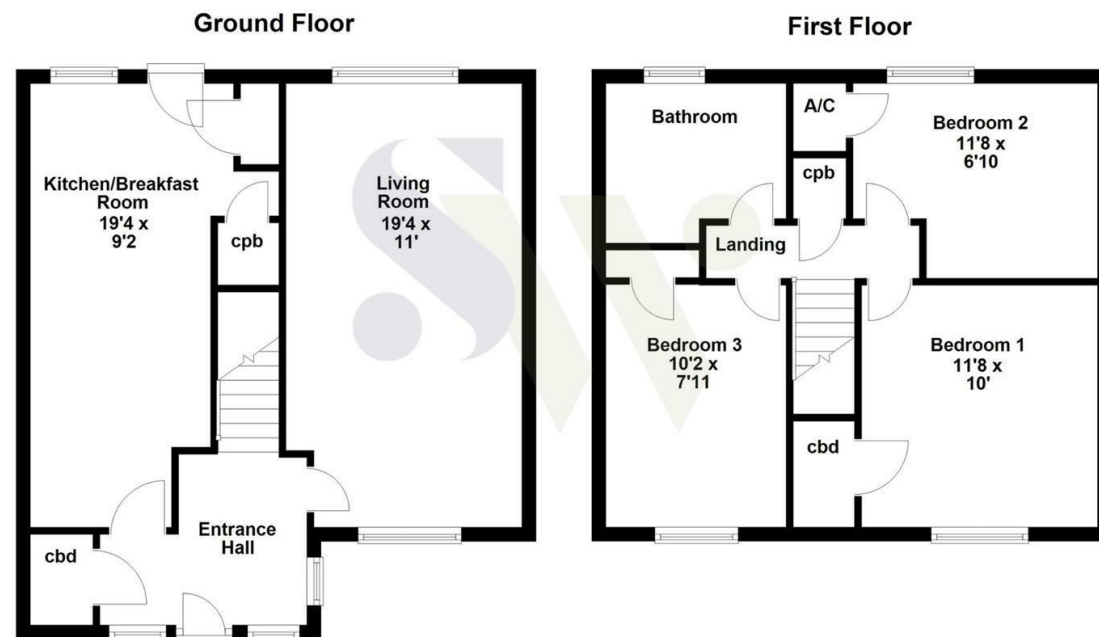
Being perfectly situated within the much sought after Beanfield area, is this rarely available family home that is being offered for sale with NO CHAIN. Providing deceptively spacious accommodation to include a porch extension that also includes the potential to convert a large storage area that could be converted to a cloakroom/WC, there is also a 20'ft living/dining room, and a kitchen/breakfast room. The first floor offers THREE BEDROOMS all with built in storage and there is also a family bathroom. Outside, there is an enclosed easy maintenance frontage, whilst the rear is also designed as a patio style garden. We strongly recommend an early visit is highly recommended to this property which has been priced to sell!


Energy Rating D. Council Tax A.



£164,950





Energy Efficiency Rating		
	Current	Potential
Very energy efficient - lower running costs		
(92 plus) A		84
(81-91) B		
(69-80) C		
(55-68) D	55	
(39-54) E		
(21-38) F		
(1-20) G		
Not energy efficient - higher running costs		
England & Wales	EU Directive 2002/91/EC	



When you buy with Simpson West, you know **you'll be in safe hands**. From the moment you walk through our doors, we'll make you **feel truly welcome**. Our sales consultants and financial advisors will take you through **every step of the process**, offering **free expert advice** along the way, from help choosing the right mortgage and insurance through to finding your conveyancer. And if you need help selling your home too, **with over 20 years of local experience, you can trust us to get you moving**.



**Simpson
West**

Making Every
Journey Personal



01536 202007

info@simpsonwest.co.uk

<https://www.simpsonwest.co.uk/>

64 Corporation Street, Corby, Northants, NN17 1NH