





\*GUIDE PRICE: £300,000 - £325,000\*

Situated in the ever-popular Hilsea area, this well-presented three/four-bedroom townhouse offers flexible and spacious accommodation arranged over multiple floors, making it an ideal home for families, professionals, or those seeking versatile living space. Benefitting from excellent transport links, local amenities, and easy access to Portsmouth and surrounding areas, the property combines convenience with comfortable modern living.

The ground floor comprises of a converted garage space currently used as a Gym, with a downstairs W.C. and kitchen / diner, with a spacious entrance hall and useful storage. To the rear, there is access to the private garden. The property also benefits from off-road parking for two vehicles and rear access.

The first floor features a generous lounge filled with natural light, providing the perfect space for relaxing and entertaining. The separate room is currently used as a fourth bedroom but could easily be changed to manoeuvre an upstairs kitchen.

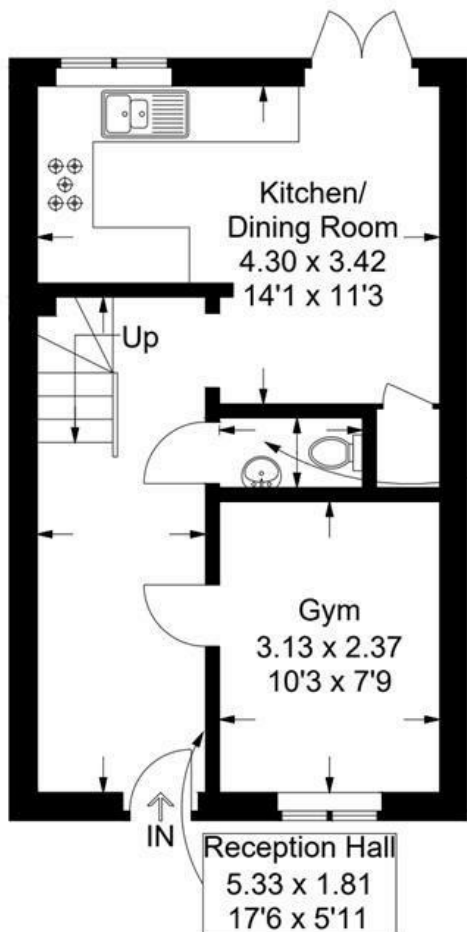
On the upper floor are three well-proportioned bedrooms and a family bathroom. The principal bedroom enjoys a pleasant outlook while the additional bedrooms offer flexibility for children, guests, or home working. The property is perfectly positioned to take advantage of Hilsea's excellent transport connections, including road, rail, and bus links.



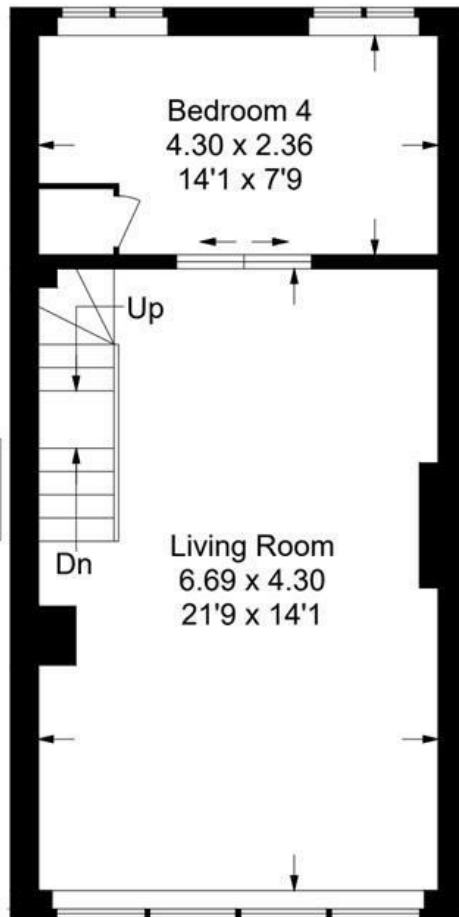
- GUIDE PRICE: £300,000 - £325,000
- THREE / FOUR BEDROOM TOWNHOUSE
- PARKING FOR TWO CARS
- POPULAR LOCATION
- EXCELLENT TRANSPORT LINKS
- SPACIOUS FIRST FLOOR LOUNGE
- REAR ACCESS
- FLEXIBLE ACCOMODATION

# Rampart Gardens, Hilsea

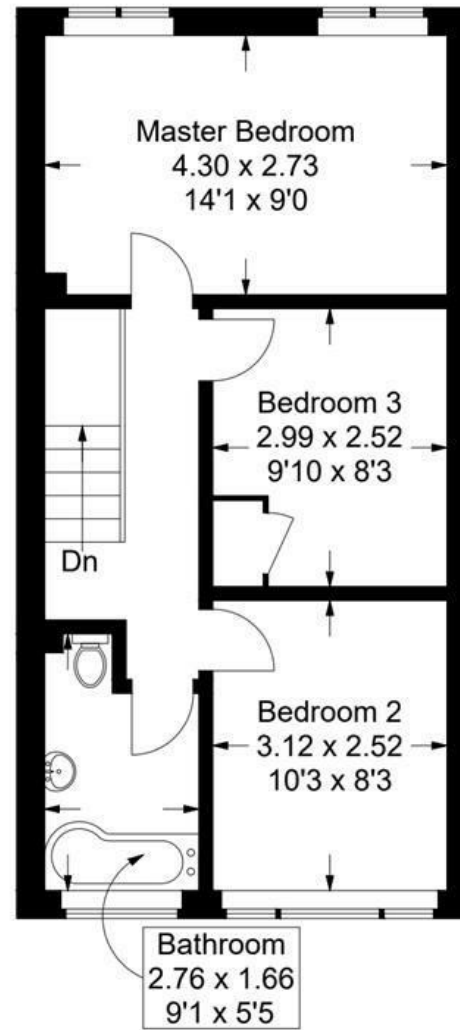
Approximate Gross Internal Area = 112.7 sq m / 1213 sq ft



Ground Floor



First Floor



Second Floor

This plan is for layout guidance only. Not drawn to scale unless stated. Windows and door openings are approximate. Whilst every care is taken in the preparation of this plan, please check all dimensions, shapes and compass bearings before making any decisions reliant upon them.