



**Price**  
**£500,000**

**Freehold**

3x  1x  2x 

**Newport Road, Cowes,  
Isle of Wight, PO31**

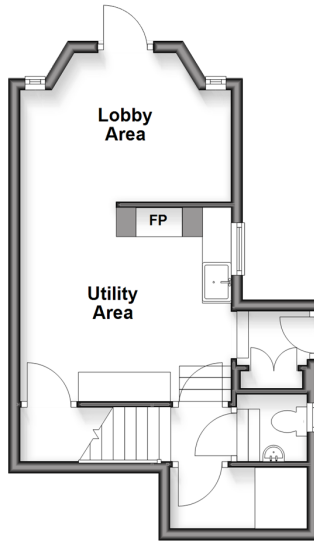
**OVER 60?**

Secure this property  
for up to **59% less!**

**Pittis**   
Helping you move forwards

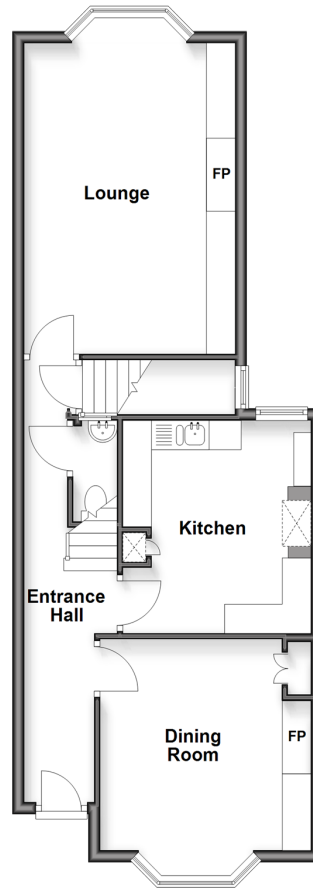
### Lower Split Level Ground Floor

Approx. 30.9 sq. metres (332.5 sq. feet)



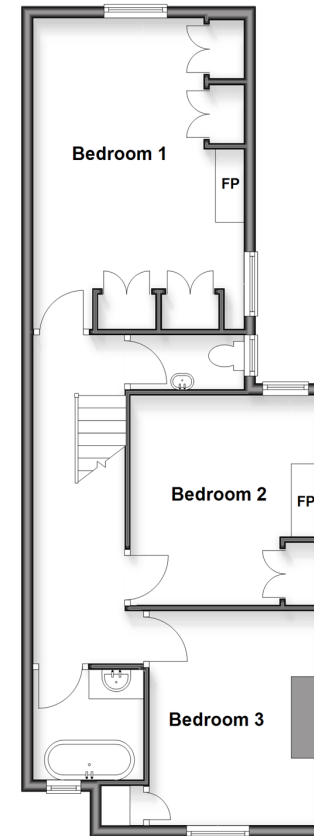
### Ground Floor

Approx. 59.9 sq. metres (645.1 sq. feet)



### First Floor

Approx. 59.6 sq. metres (641.2 sq. feet)



## Accommodation

### LOWER GROUND FLOOR

Lobby Area / Snug  
Utility Room  
Cloakroom

Kitchen: 11'11 x 10'9 (3.63m x 3.28m)  
Cloakroom  
Lounge: 13'5 x 11'11 (4.09m x 3.63m)

Bedroom 2: 13'3 x 11'1 (4.04m x 3.38m)  
Cloakroom  
Bedroom 1: 17'7 x 12'1 (5.36m x 3.69m)

### GROUND FLOOR

Entrance Hall  
Dining Room: 13'3 x 12'1 (4.04m x 3.69m)

### FIRST FLOOR

Landing  
Bathroom  
Bedroom 3: 13'1 x 10'0 (3.99m x 3.05m)

### OUTSIDE

Driveway  
Rear Garden  
Summer House / Garden Room





## Main features

- Semi-detached period property spread over 3 floors
- Off road parking
- Bathroom plus 3 cloakrooms, Ideal home for family life
- Beautifully presented throughout
- Great views and easy access to Cowes and plenty of amenities



### Nearest Schools

Primary Schools: Somerton Middle School 0.6 miles, Solent Middle School 1.4 miles, Christ the King College 4.2 miles

Secondary Schools: Cowes High School 0.8 miles,



### Transport Information

Train Stations: Sandown 9.0 miles, Lake 9.5 miles, Shanklin 9.8 miles



### Address

Newport Road, Cowes, Isle of Wight, PO31



### Directions

For directions to this property please contact us.







**Pittis**  
Helping you move forwards

Call Cowes Branch 01983 292345 ■ [pittis.co.uk](http://pittis.co.uk)



■ Through a Homewise Home For Life Plan people aged 60+ can secure this property for up to 59% less, by purchasing a Lifetime Lease



60902912/20260415/MB/TB