



www.jeffreygross.co.uk

CARDIFF

VALE

CAERPHILLY

BRISTOL

Watkiss Way



Comments by Miss Lauren King



Property Specialist
Miss Lauren King
Lettings Negotiator

lauren.king@jeffreycross.co.uk



Picton, Victoria Wharf, Cardiff Bay



Total Area: 46.6 m² ... 501 ft² (excluding balcony)

All measurements are approximate and for display purposes only

Comments by the Homeowner





Energy Efficiency Rating		Current	Potential
Very energy efficient - lower running costs			
(92 plus) A			
(81-91) B		84	87
(69-80) C			
(55-68) D			
(39-54) E			
(21-38) F			
(1-20) G			
Not energy efficient - higher running costs			
England & Wales	EU Directive 2002/91/EC		



Watkiss Way

, Cardiff, CF11 0SG

£950



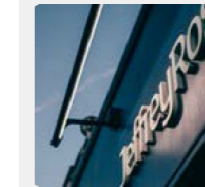
1 Bedroom(s)



1 Bathroom(s)



505.90 sq ft



Contact our
Penarth Branch

02920415161

Within the gated development of Victoria Wharf, on the fifth floor, a short walk to amenities, the International Sports Village and the Cogan train station. Internally the property comprises of an entrance hallway, living/dining room, kitchen (with white goods), one double bedroom (with built in wardrobes) and bathroom with shower above bath. Property available furnished. One allocated parking space.

Council Tax Band D
EPC Rating B

A holding fee of one weeks' rent will be payable to secure the dwelling. This will be deducted from the final balance payable upon moving into the dwelling, subject to a successful application. Jeffrey Ross Limited reserves the right to retain this payment should the applicant have provided false or misleading information at the time of applying for the dwelling or failed to take reasonable steps to enter into the Standard Occupation Contract.





CARDIFF

VALE

CAERPHILLY

BRISTOL

www.jeffreygross.co.uk