



NEW RELEASES OF
1,1,3 BEDROOM
APARTMENTS
COUNTRYSIDE

BREENS

3 Alma Road

Enfield · EN3

ASKING PRICE

£375,000

LEASEHOLD



BREENS

THE HOME

3 Alma Road

Enfield · EN3

KEY FEATURES

- Lease: 250 Years (Less Three Days) Commencing On And Including 18 August 2017 (Approximately 240 Years Remaining)
- Service Charge: £3598.70 Per Annum
- Ground Rent: £350 Per Annum
- Offered Chain-Free
- Third Floor Apartment with Lift Access
- Two Double Bedrooms, The Principal Benefitting From An En-Suite
- Open-Plan Kitchen, Dining and Reception Space
- Separate Family Bathroom
- Tastefully Decorated Throughout
- Benefitting From a Private Balcony

EPC RATING

B

COUNCIL TAX BAND

C

2

BEDROOMS

2

BATHROOMS

1

RECEPTIONS

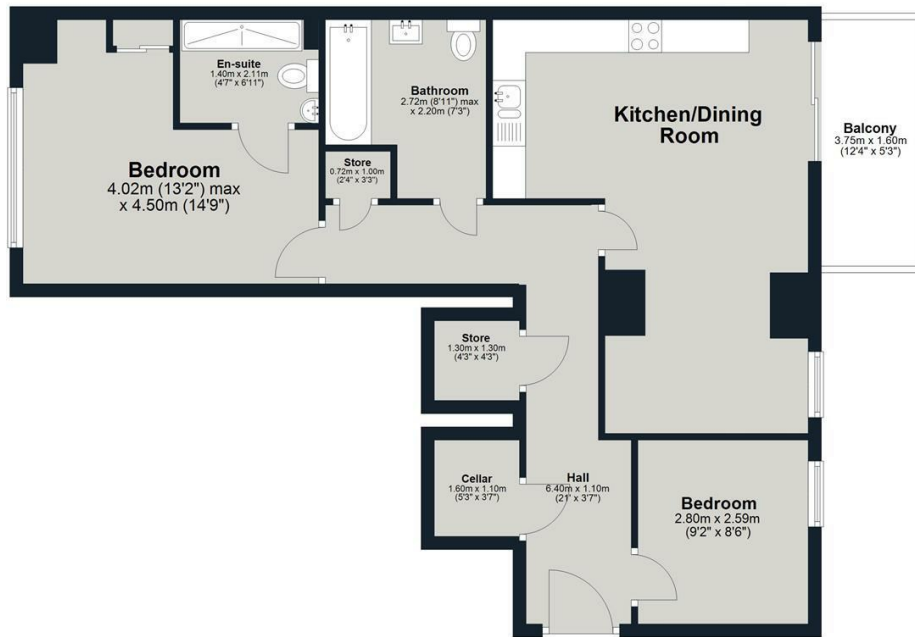


BREENS

BREENS



Ground Floor
 Approx. 73.0 sq. metres (785.5 sq. feet)
 (excluding Balcony)



Total area: approx. 73.0 sq. metres (785.5 sq. feet)

Peregrine Point

GET IN TOUCH

020 8804 8989

enfield@breens.property

www.breens.property

VISIT US

557- 559 Hertford Road, Enfield, EN3 5UQ

These particulars are intended as a general guide and are believed to be correct, but their accuracy is not guaranteed and they do not form part of any offer or contract. All measurements are approximate and for guidance only. The Agent has not tested any apparatus, equipment, fixtures, fittings or services and cannot verify they are in working order or fit for purpose. Photographs are for illustration only and may depict items that are not for sale or included in the sale price. References to tenure are based on information supplied by the vendor; the Agent has not seen the title documents, and buyers should obtain verification from their solicitor or surveyor. Under the Money Laundering Regulations 2017, intending purchasers will be asked to produce identification and documentation at a later stage. These particulars are issued on the condition that all negotiations are conducted through Breens Estate Agents. Subject to contract and availability.