



# Abbey Gardens

St John's Wood, NW8

£4,000 per month  
(£923.08 per week)

A modern two bedroom split level maisonette with parking space, private garden and modern interior set in the heart of St John's Wood.

**CHESTERTONS**



# Abbey Gardens

## St John's Wood, NW8

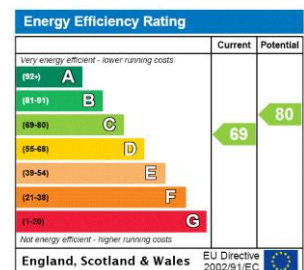
- Split Level Maisonette
- 2 Bedrooms, 2.5 Bathrooms
- Private Garden, Parking Space
- In the Heart of St John's Wood



A modern two bedroom split level maisonette with parking space, private garden and modern interior set in the heart of St John's Wood.

The property comprises two double bedrooms, two bathrooms and another WC, large open plan reception room/kitchen with integrated appliances and private rear garden.

**Minimum Term:** 6 months  
**Deposit Required:** £4,615.38  
**Local Authority:** Westminster  
**Council Tax Band:** G  
**EPC Rating:** C  
**Furnished, Part Furnished, Unfurnished**



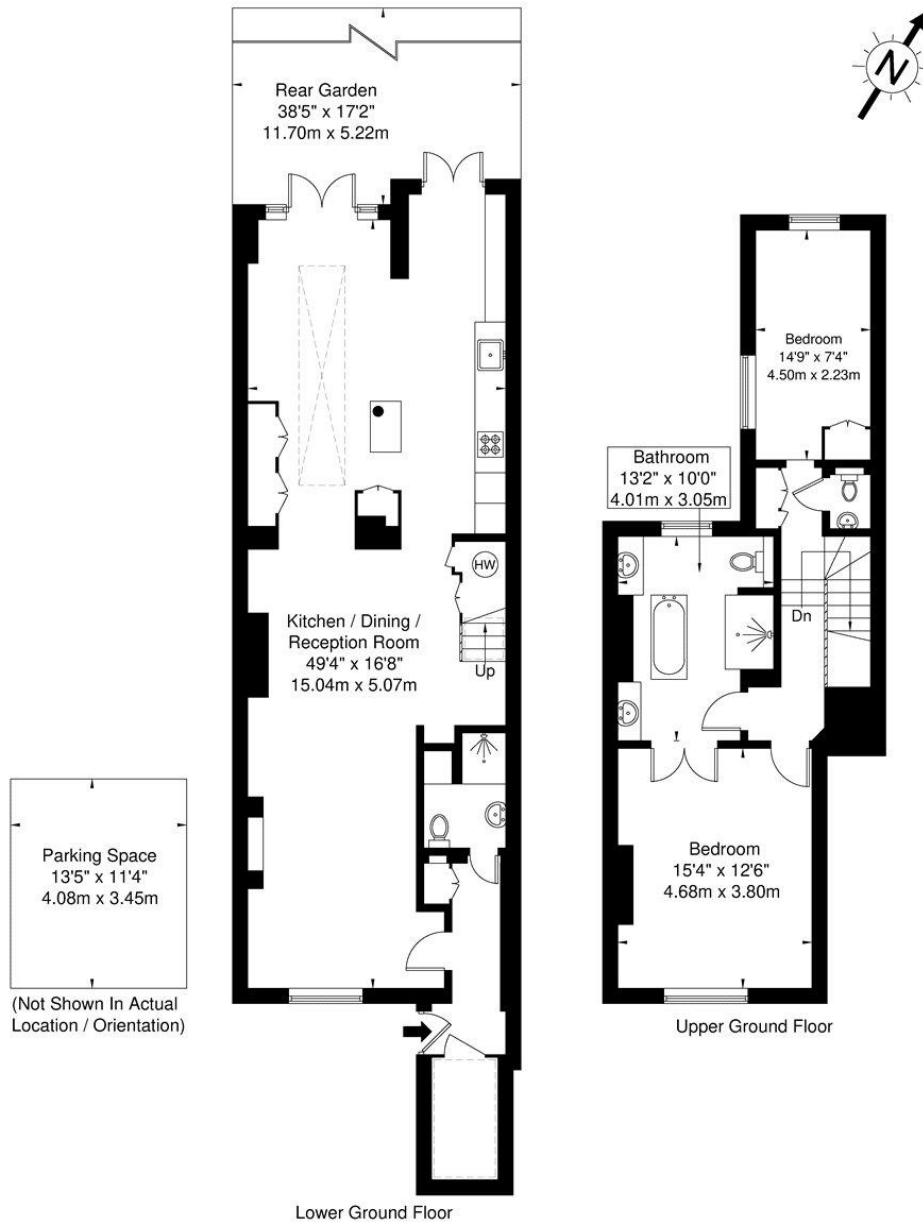
### *Chestertons St John's Wood Lettings*

105 St. John's Wood Terrace  
 London  
 NW8 6PL  
 stjohslettingsusers@chestertons.co.uk  
 02030408622  
 chestertons.co.uk

Additional tenant charges apply (fees apply to non-AST tenancies only)  
 Tenancy Agreement Fee: £300  
 References per Tenant/Guarantor: £60  
 Inventory check (approx. £100 – £250 inc. VAT)  
 chestertons.co.uk/property-to-rent/applicable-fees

# Abbey Gardens NW8 9AT

Approx. Gross Internal Area = 133.8 sq m / 1440 sq ft



Ref

Copyright

**BLEU  
PLAN**

The Floor plan is not to scale and measurements and areas shown are approximate and therefore should be used for illustrative purposes only. The plan has been prepared in accordance with the RICS code of Measuring Practice and whilst we have confidence in the information produced it must not be relied on. If there is any aspect of particular importance, you should carry out or commission your own inspection of the property.

Copyright © BLEUPLAN

