



15 Dorset Road, London, SE9 4QY

Offers Over £425,000

- Two Double Bedrooms
- Popular Location
- Four Piece Bathroom Suite
- Downstairs W.C
- Period House
- EPC Rating D

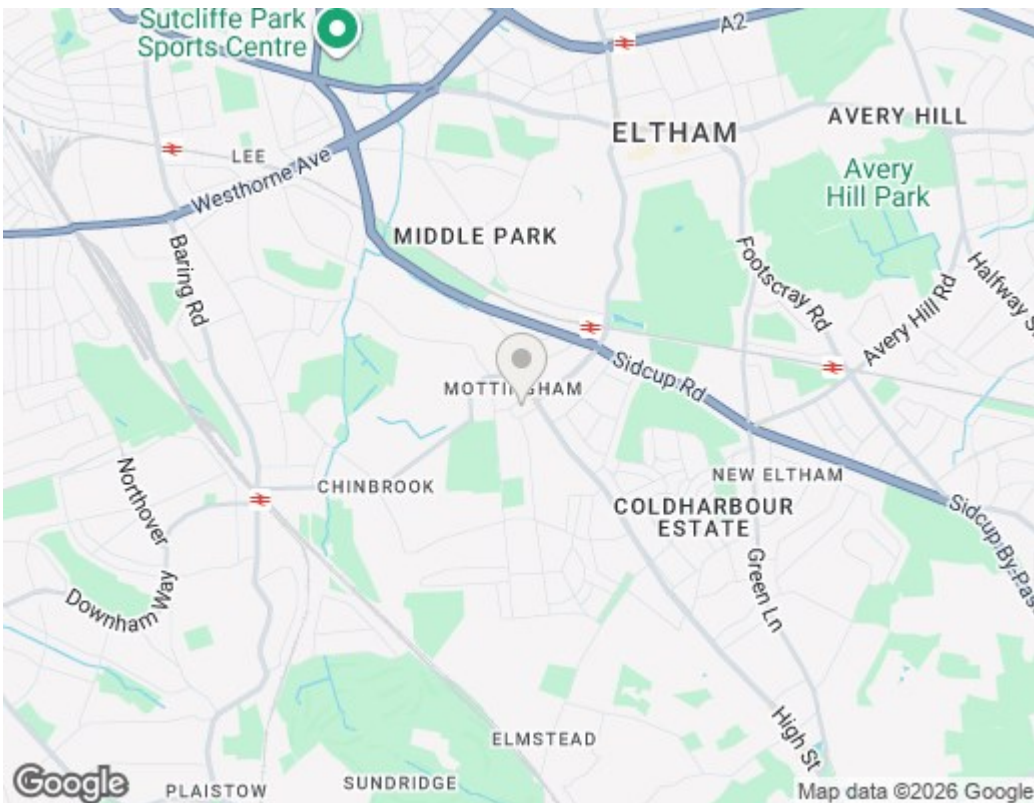
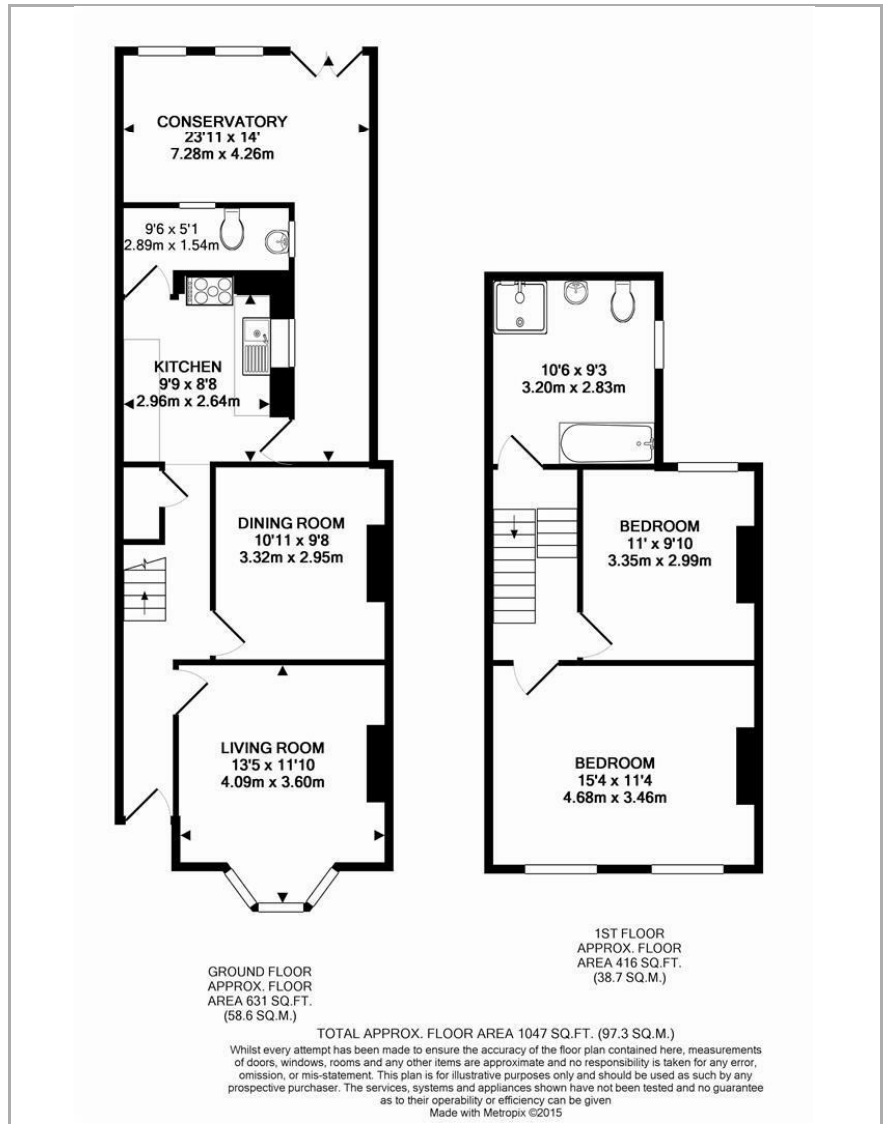
15 Dorset Road, London SE9 4QY

Situated within the heart of Mottingham Village is this TWO DOUBLE BEDROOM PERIOD HOUSE. The property comprises of two reception rooms, a conservatory, 9'7 fitted kitchen and downstairs w.c. The first floor has two double bedrooms plus a large four piece bathroom. Homes on this road are proving to be very popular and having all the local amenities on your doorstep is a huge benefit, offered with vacant possession and no onward chain.



Council Tax Band: D





Viewings

Viewings by arrangement only.
Call 0208 859 1100 to make an appointment.

EPC Rating:

D

Energy Efficiency Rating		Current	Potential
Very energy efficient - lower running costs			
(92 plus)	A		
(81-91)	B		
(69-80)	C		80
(55-68)	D	59	
(39-54)	E		
(21-38)	F		
(1-20)	G		
Not energy efficient - higher running costs			
England & Wales		EU Directive 2002/91/EC	