



**Trueman
Letting
Company**



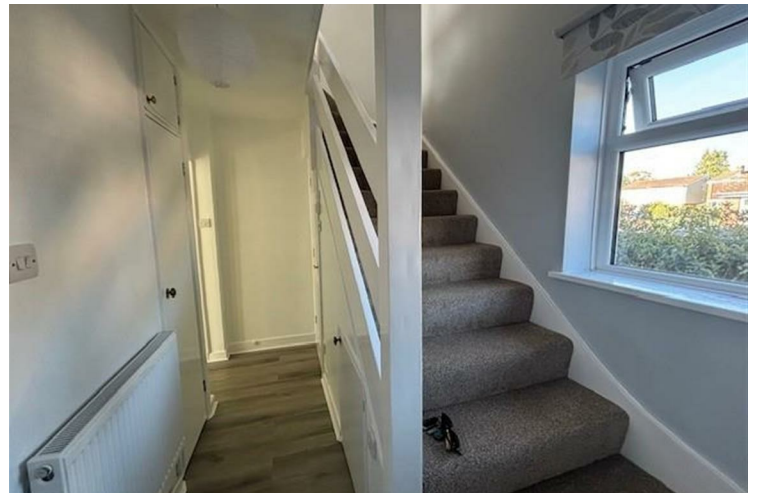
24 Bardsley Drive Farnham

£1,650 Per

A light and spacious 2/3 Bedroom end of terrace house which has been the subject of major updating in the last few months including redecoration, new carpets, curtains, blinds, new radiators with the added benefit of off road parking and front and rear gardens. The property is situated within walking distance of all amenities and Weydon School. EPC D COUNCIL TAX C

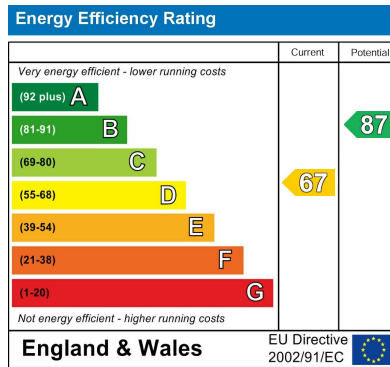


- Entrance lobby into hallway with cloakroom. Two storage cupboards and meter cupboard
- Sitting/Dining Room with doors to rear garden - laminate flooring throughout ground floor
- Study/Bedroom 3
- Fully fitted kitchen with electric hob, electric eye level oven, dishwasher, washing machine, large fridge, under counter freezer



- Large Family bathroom with separate shower cubicle
- Two Double Bedrooms both with fitted wardrobes and cupboards
- Loft space with ladder and fully boarded.
- Gated driveway with parking and front grassed area of garden.
- To the rear there is a good sized paved garden with shed (with electrics).
- EPC D COUNCIL TAX BAND C





Agents Note: Whilst every care has been taken to prepare these particulars, they are for guidance purposes only. All measurements are approximate and are for general guidance purposes only and whilst every care has been taken to ensure their accuracy, they should not be relied upon and potential buyers/tenants are advised to recheck the measurements

Trueman Letting Company Lettings
 5a Castle Street
 Farnham
 Surrey
 GU9 7HR

01252 711227
 lettings@tlc-farnham.co.uk
 www.tlc-farnham.co.uk

