



Knighton Church Road, South Knighton

£440,000 Freehold

Elegant three-bedroom period terrace in South Knighton with two reception rooms, modern bathroom, stylish kitchen/breakfast room, established rear garden and driveway parking.





L-Shaped Entrance Hall

Features original tiled floor, picture rail, stairs to the first floor, and a radiator.

Reception Room One

14' 6" x 11' 4" (4.41m x 3.46m)

Includes a bay window to the front elevation, cornice to ceiling, picture rail, a feature period-style fireplace with tiled inset, marble hearth and fire surround, storage cupboard, and a radiator.

Reception Room Two

14' 6" x 12' 4" (4.41m x 3.76m)

Includes a door to the rear elevation, cornice to ceiling, picture rail, feature period fireplace with tiled inset, marble hearth and fire surround, wooden flooring, and a radiator.

Ground Floor WC

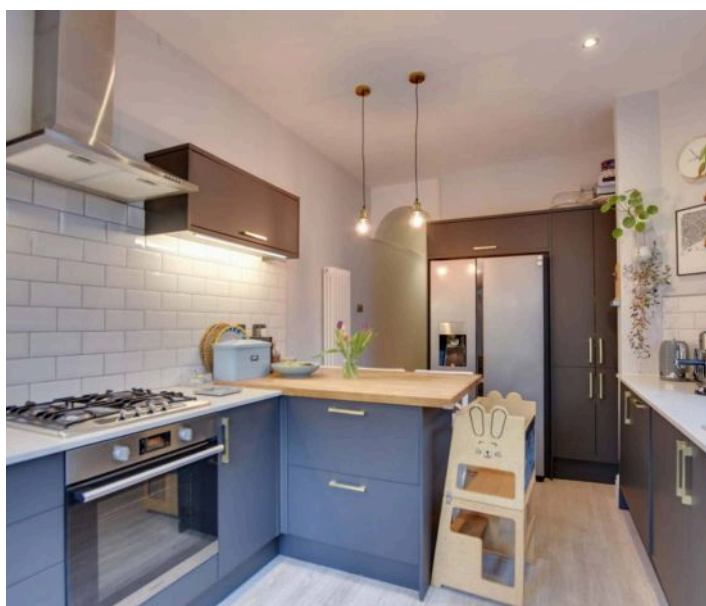
5' 0" x 2' 5" (1.53m x 0.74m)

Features a window to the side elevation, a low-level WC, a wash hand basin, and a tiled floor.

Fitted Kitchen / Breakfast Room

14' 9" x 9' 2" (4.50m x 2.80m)

Features a mock sash double-glazed window to the side elevation and double-glazed French doors to the rear elevation. Includes a sink and drainer unit, a range of wall units with under-unit lighting, base units with marble work surfaces, a breakfast bar, a built-in oven, and a gas hob with a stainless steel chimney hood. It also contains a built-in dishwasher, space for a fridge freezer, a built-in bookshelf, a larder unit, inset ceiling spotlights, wood-effect flooring, and a tall radiator.





First Floor L-Shaped Landing

Features a leaded window to the front elevation, an original storage cupboard, loft access, and a radiator.

Bedroom One

14' 6" x 11' 4" (4.41m x 3.46m)

Includes a bay window to the front elevation, a period-style fireplace, and a radiator.

Bedroom Two

14' 2" x 12' 4" (4.33m x 3.77m)

Includes a mock sash window to the rear elevation, a feature period-style fireplace, a dressing table with storage cupboards and a built-in wash hand basin with granite work surface, a built-in original style storage cupboard, fitted wardrobes, and a radiator.

Bedroom Three

11' 10" x 9' 6" (3.60m x 2.90m)

Includes a sash window to the rear elevation, period-style fireplace, fitted wardrobes, box cupboards and shelving, a radiator, and an airing cupboard.

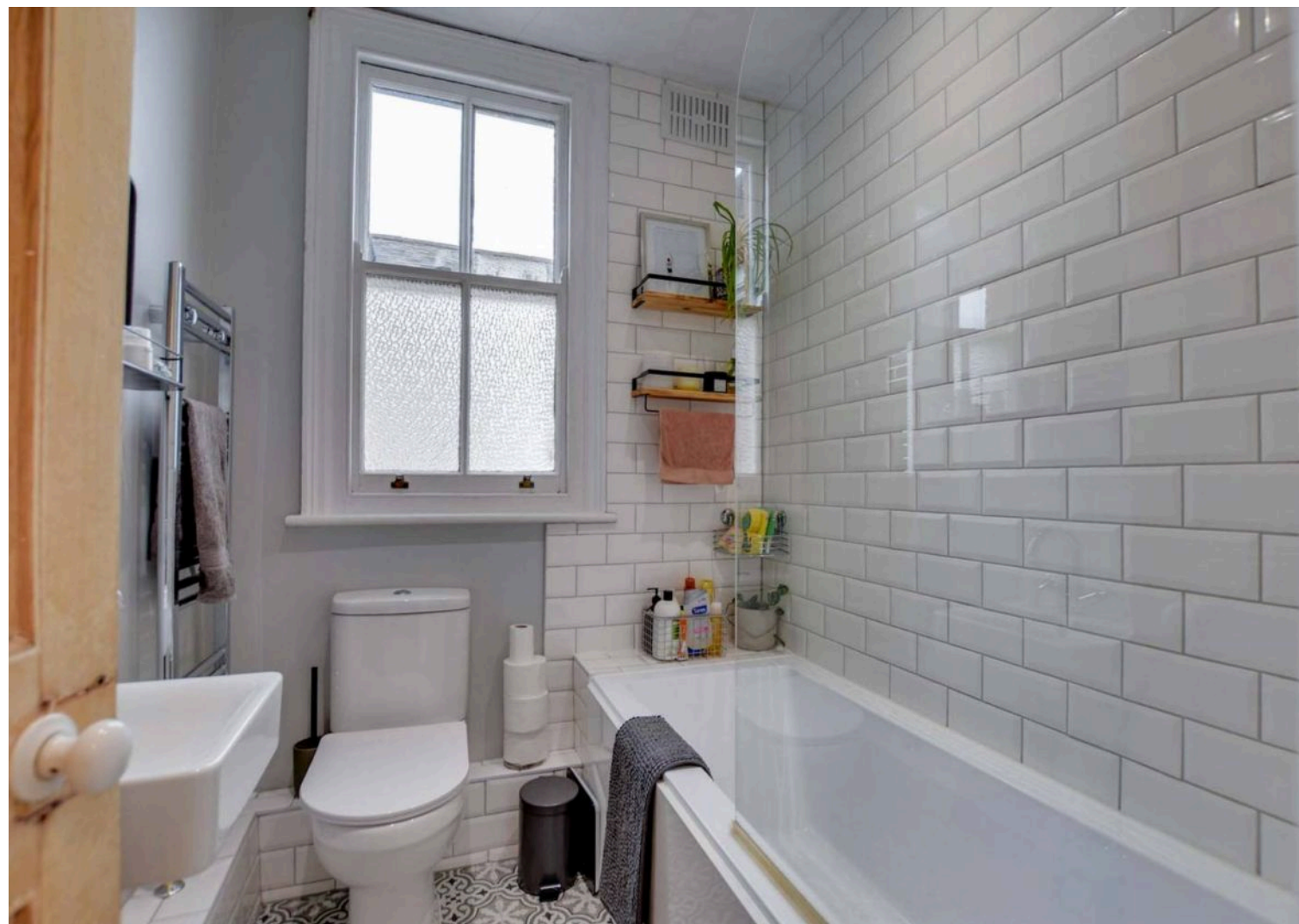
Bathroom

6' 3" x 5' 8" (1.90m x 1.72m)

With a bath with overhead rainfall shower and hand-held shower head, a wash hand basin, low-level WC, tiled flooring and a heated chrome towel rail.









Front Garden

With flower beds, mature shrubs, and hedging to the perimeter.

Rear Garden

Block-paved patio with a pergola and established wisteria over. Mainly lawned rear garden with a raised decked area, established shrubs, flower beds, and mature trees. Includes a storage shed, outside lighting, and a gate for side access.

Driveway

With a block-paved driveway.



FLOOR PLAN CREATED BY CUBICASA APP; MEASUREMENTS DEEMED HIGHLY RELIABLE BUT NOT GUARANTEED.





Council Tax band: D

Tenure: Freehold

EPC Energy Efficiency Rating: E

We'll keep you moving...



We must inform all prospective purchasers that the measurements are taken by an electronic take and are provided as a guide only and they should not be used as accurate measurements. We have not tested any mains services, gas or electric appliances, or fixtures and fittings mentioned in these details, therefore, prospective purchasers should satisfy themselves before committing to purchase. Intending purchasers must satisfy themselves by inspection or otherwise to the correctness of the statements contained in these particulars. Knightsbridge Estate Agents (nor any person in their employment) has any authority to make any representation or warranty in relation to the property. The floor plans are not to scale, and are intended for use as a guide to the layout of the property only. They should not be used for any other purpose. We are required by law to conduct anti-money laundering checks on all those selling or buying a property. Whilst we retain responsibility for ensuring checks and any ongoing monitoring are carried out correctly, the initial checks are carried out on our behalf by Lifetime Legal who will contact you once you have agreed to instruct us in your sale or had an offer accepted on a property you wish to buy. The cost of these checks is £60 (incl. VAT), which covers the cost of obtaining relevant data and any manual checks and monitoring which might be required. This fee will need to be paid by you in advance of us publishing your property (in the case of a vendor) or issuing a memorandum of sale (in the case of a buyer), directly to Lifetime Legal, and is non-refundable. We will receive some of the fee taken by Lifetime Legal to compensate for its role in the provision of these checks.