



## WILLIAM MORRIS WAY, SW6

£1,950,000

Three bedrooms  
Two bathrooms  
Two receptions  
River views  
Ample storage  
Energy rating: c

@marshandparsons  
marshandparsons.co.uk

MARSH &  
PARSONS



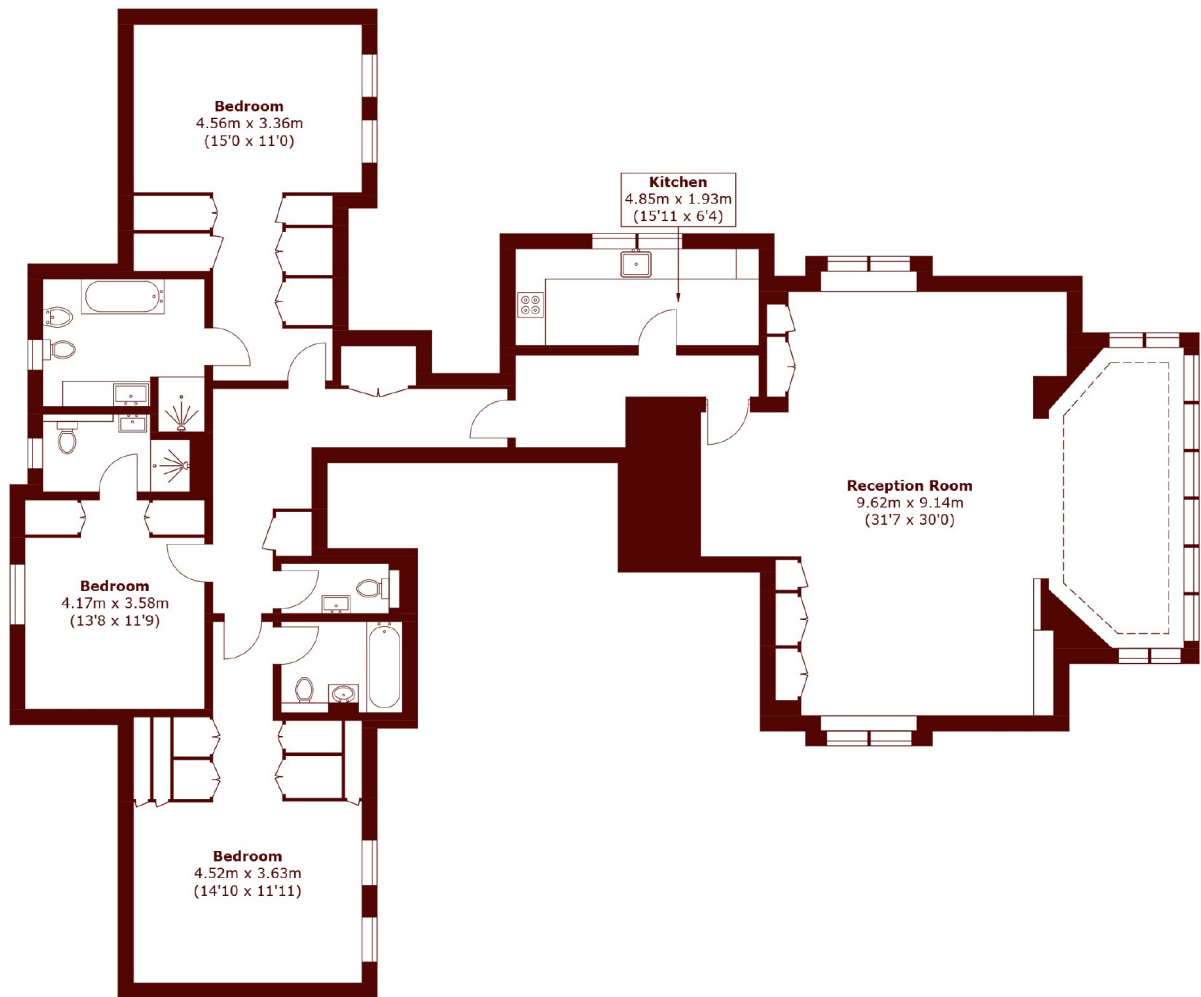
# ABOUT THE PROPERTY

A stunning ninth-floor penthouse offering panoramic views across London and the River Thames. Accessed via a private landing, the apartment spans approximately 2,100 sq ft and features expansive living spaces designed to maximise natural light and showcase the exceptional outlook.

Residents of Regent on the River enjoy first-class amenities, including a dedicated concierge, gated security, and the rare advantage of two underground parking spaces. Watermans Quay sits directly on the Thames, providing a peaceful riverside setting with excellent transport links.



# STEP INSIDE WILLIAM MORRIS WAY



**Ninth Floor**

Total area (approx.): 192.9 sq. m (2,076.3 sq. ft)

**Fulham**  
020 7736 9822

Energy Rating: C We aim to make our particulars both accurate and reliable. However, they are not guaranteed; nor do they form part of an offer or contract. If you require clarification on any points then please contact us, especially if you're traveling some distance to view. Please note that appliances and heating systems have not been tested and therefore no warranties can be given as to their good working order

**MARSH &  
PARSONS**