



Pantycelyn Place, offers in excess of £240,000

- Renovated throughout by the current owners
- Fantastic open plan lounge / kitchen / dining room with doors to the rear garden
- Contemporary shower room
- Generous rear garden and driveway parking for several vehicles
- Convenient location close to schools, shops, amenities, and the Heritage Coast.
- Council Tax Band - D
- EPC Rating: D



 3  1  2



About the property

Renovated throughout by its present owners, this semi-detached home in sought-after St Athan is near a wide range of amenities. Boasting a superb open plan living space, a stylish shower room, and a generous rear garden plus driveway parking for several cars.





Hallway

Entered via composite glazed front door, stairs leading to the first floor with storage area beneath, wood effect laminate floor, opening through to lounge area.

Lounge/Kitchen/Dining Room

21' 4" x 18' 8" (Max) (6.50m x 5.69m (Max))

Lounge area

UPVC double glazed window to front, log burner, vertical radiator, wood effect laminate flooring, open plan to kitchen / dining area.

Kitchen / Dining Area

Units to base and wall height, tiled splashbacks, marble effect worktops inset with stainless steel sink and drainer, induction hob with extractor hood over and oven below, space for upright fridge/freezer, larder cupboards, integrated dishwasher and washing machine. Wall mounted Worcester boiler, UPVC double glazed obscured door to side, window to the rear, UPVC double glazed French doors leading to the rear garden, wood effect laminate flooring.

Landing

Access to insulated loft space, UPVC double glazed window to side, doors leading to three bedrooms and shower room, carpeted.

Bedroom One

12' 7" x 11' 11" (3.84m x 3.63m)

A double bedroom with UPVC double glazed window to front, radiator, carpeted.

Bedroom Two

12' 6" x 9' 2" (3.81m x 2.79m)

A further double bedroom with UPVC double glazed window to rear, radiator, carpeted.

Bedroom Three

8' 8" x 7' 11" (2.64m x 2.41m)

UPVC double glazed window to rear, radiator, carpeted.

Shower Room

UPVC double glazed obscured window to rear, shower enclosure with marble effect tiled walls, wash hand basin with cupboard below, push button WC, chrome ladder style radiator, tiled flooring, UPVC double glazed obscured window to side.

Front Of Property

Driveway parking for several vehicles, access to the side and rear of the property. Area laid to decorative stone.

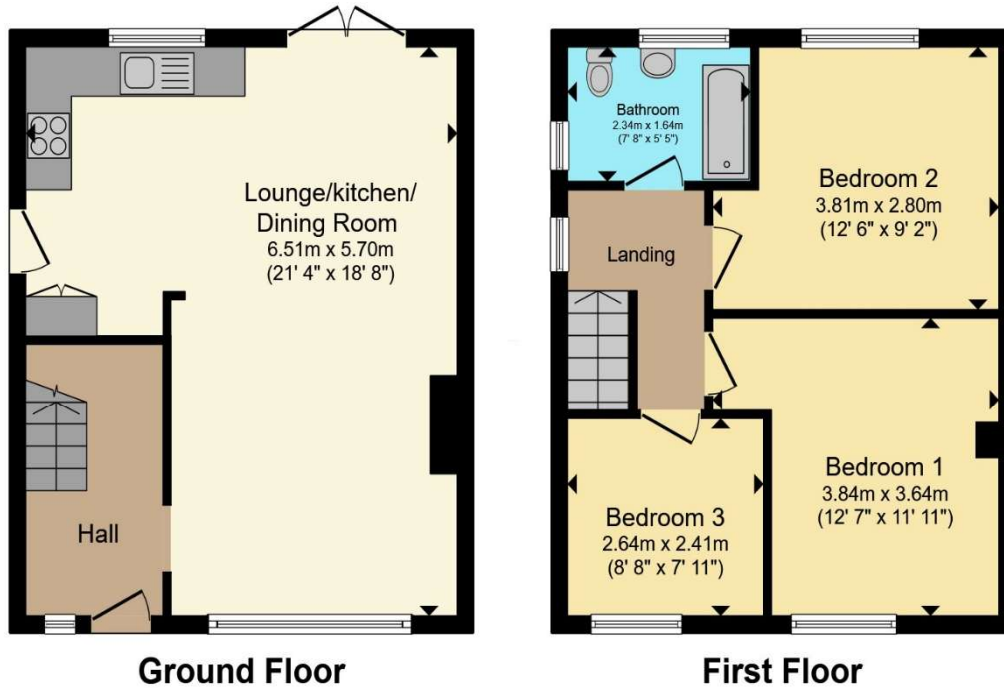
Rear Garden

Generous garden with paved patio area and a covered games area to the side with gated access to the front of the property, storage sheds, greenhouse. Large area laid to lawn, fencing and walls to boundary.

01446 772857

enquiries@pablack.co.uk

Floorplan



Total floor area 78.4 m² (844 sq.ft.) approx

This floor plan is for illustrative purposes only. It is not drawn to scale. Any measurements, floor areas (including any total floor area), openings and orientation are approximate. No details are guaranteed, they cannot be relied upon for any purpose and they do not form part of any agreement. No liability is taken for any error, omission or misstatement. A party must rely upon its own inspection(s). Powered by www.propertybox.io

Important Information

Note while we endeavour to make our sales details accurate and reliable, if there is any point which is of particular interest to you, please contact the office and we will be pleased to confirm the position for you. We have not personally tested any apparatus, equipment, fixtures, fittings or services and cannot verify they are in working order or fit for their purposes. Nothing in these particulars is intended to indicate that carpets or curtains, furnishings or fittings, electrical goods (whether wired or not). Gas fires or light fittings or any other fixtures not expressly included form part of the property offered for sale. This computer generated Floorplan, if applicable, is intended as a general guide to the layout and design of the property. It is not to scale and should not be relied upon for dimensions. Tenure: We cannot confirm the tenure of the property as we have not had access to the legal documents. The buyer is advised to obtain verification from their solicitor or surveyor.

Peter Alan Limited is registered in England and Wales under company number 2073153, Registered Office is Cumbria House, 16-20 Hockliffe Street, Leighton Buzzard, Bedfordshire, LU7 1GN. VAT Registration Number is 500 2481 05. For activities relating to regulated mortgages and non-investment insurance contracts, Peter Alan Limited is an appointed representative of Connells Limited which is authorised and regulated by the Financial Conduct Authority. Connells Limited's Financial Services Register number is 302221. Most buy-to-let