



Lock Road, TW10

£850,000

Offers In Excess Of £850,000

A beautifully presented three bedroom family home located moments away from Ham Common. The property has planning permission granted to further extend on the ground floor and is positioned for a number of excellent local schools.

If its green open spaces you love then this location will not disappoint. With Ham Common, Richmond Park, Petersham Meadows and the River Thames on your doorstep, what more could you want. There is a choice of regular bus services into Richmond and Kingston where can be found train and tube services into Central London.

Features

- Three Bedrooms
- Spacious Reception Room
- Kitchen/Dining Room
- Private Garage
- Extension Potential
- Just Off Ham Common



Lock Road, TW10

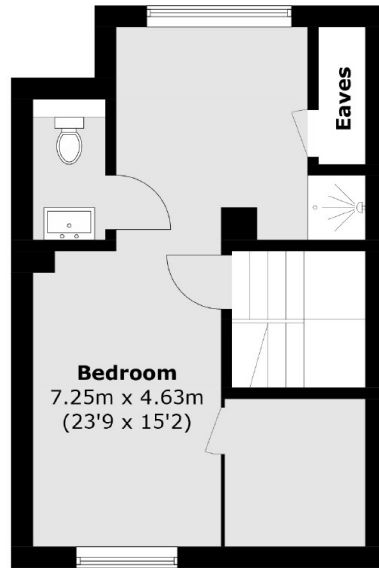
The ground floor consists of an entrance hall, a spectacular open plan reception room incorporating distinct living and dining areas with a fully fitted kitchen and door leading to the private garden.

The first floor consists of a landing, two double bedrooms, a modern family bathroom and a separate w/c. The second floor consists of a double bedroom with an ensuite shower room.

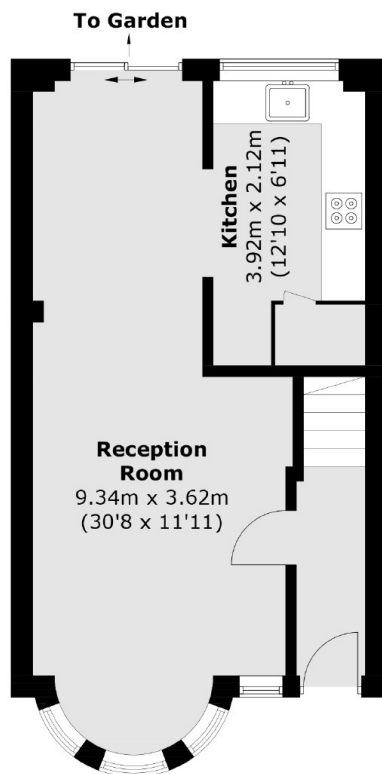
To the front is a smartly presented garden which provides access into the property. To the rear is a good sized private garden which is laid to patio. The property also has the benefit of a private garage which is found to the rear of the property.



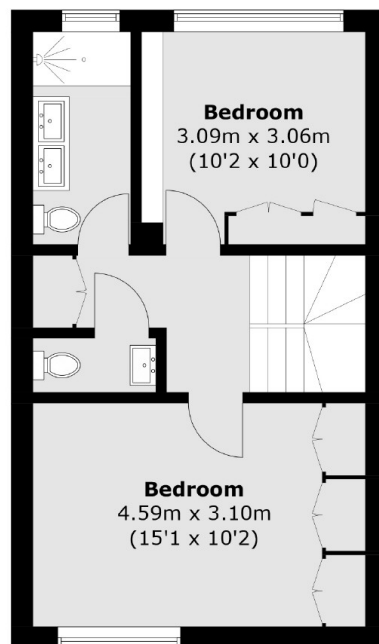
Lock Road, Ham, TW10



Second Floor



Ground Floor



First Floor

Total area (approx.): 108.4 sq. m (1,166.7 sq. ft)
(Excluding Eaves)

Dexters

Richmond
1 Sheen Road
Richmond
TW9 1AD

Sales
020 8288 9988

Energy Rating: D. We aim to make our particulars both accurate and reliable. However they are not guaranteed; nor do they form part of an offer or contract. If you require clarification on any points then please contact us, especially if you're traveling some distance to view. Please note that appliances and heating systems have not been tested and therefore no warranties can be given as to their good working order.

 **RICS** | Regulated
Estate Agent
and Letting Agent

[dexters.co.uk](https://www.dexters.co.uk)