



Carina  
Boutique  
Clothing

silver  
street  
studio

No loading  
Mon - Fri  
8.30 - 9.00 am  
12.30 - 5.00 pm  
4.30 - 8.00 pm  
Saturdays  
9.00 am - 5.00 pm



**JEREMY JENKINS**

ESTATE AGENT

# Flat 1, Silver Street House, Bradford-on-Avon. BA15 1JY.

## Guide Price £245,000.

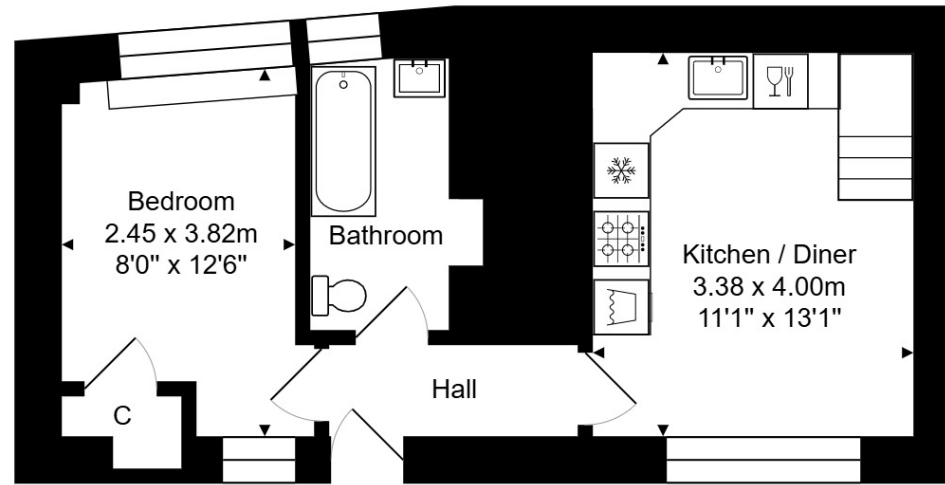
*A characterful, Grade II listed apartment set over three floors within Silver Street House, bang in the heart of town with all amenities on the doorstep and the train station a short walk away.*

A quirky Grade II listed period apartment set over three floors accessed via an impressive communal entrance hall. Once inside, on the ground floor we have an entrance hall, double bedroom which is on the left-hand side with the modern bathroom with bath & shower over it immediately next door. The impressive kitchen diner is to the right. There is plenty of thought-out space here to accommodate a dining table. The living room with feature fireplace is on the first floor. Finally, up a second flight of stairs is an occasional bedroom/study. The apartment benefits from gas central heating & some shared outside space. An ideal purchase for first time buyers.

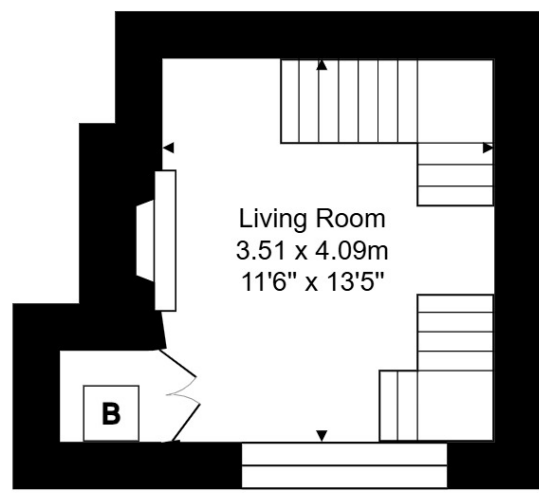
Bradford-on-Avon offers enviable market town amenities including; good schools, doctor & dentist, swimming pool & sports fields, library & Music Centre, many places to eat & drink, shops & boutiques and of course canal, river and country walks. The railway station offers a picturesque ride to Bath and Bristol city centres for high street shopping, entertainment and night life.

- Well presented, Grade II listed apartment
- Double bedroom with deep fitted cupboard
- Super, town centre location
- First floor living room with fireplace
- Modern kitchen diner & impressive bathroom
- Shared outside space

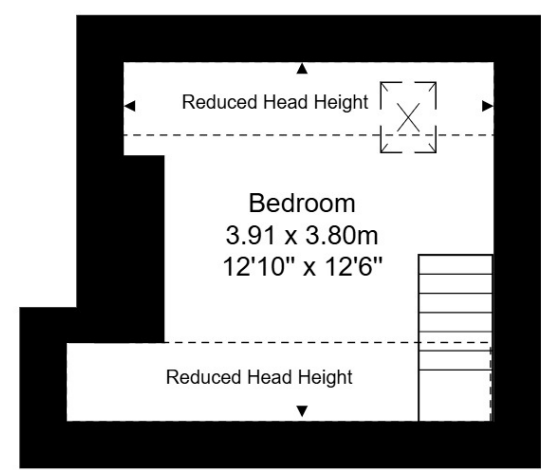




Ground Floor  
Area: 35.9 m<sup>2</sup> ... 386 ft<sup>2</sup>



First Floor  
Area: 15.9 m<sup>2</sup> ... 171 ft<sup>2</sup>



Second Floor  
Area: 15.2 m<sup>2</sup> ... 163 ft<sup>2</sup>

Total Area: 66.9 m<sup>2</sup> ... 720 ft<sup>2</sup>

Whilst every attempt has been made to ensure the accuracy of the floorplan contained here,

