



Uxbridge Road, W5

£695,000

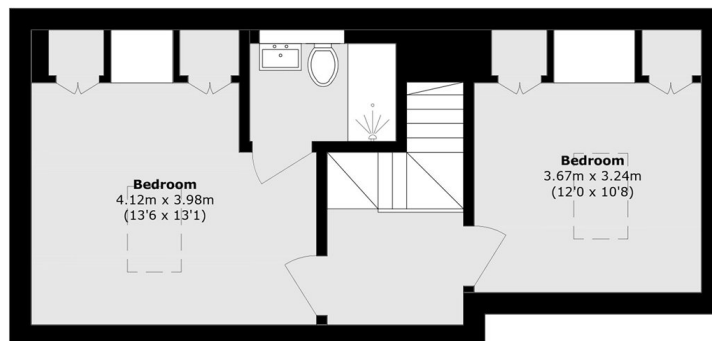
This stunning three-bedroom penthouse apartment is arranged over two floors and offers impressive views across London. The property includes a spacious reception area, a modern kitchen, three double bedrooms (one with en suite), a separate bathroom, private roof terrace, air conditioning throughout along with access to a porter, parking, and on-site gym and pool.

Ideally located less than 0.5 miles from Ealing Broadway station (Elizabeth Line), the property offers excellent transport links via the Central, District and National Rail services. The area is well known for its vibrant high street, with a wide selection of shops, cafés and restaurants.

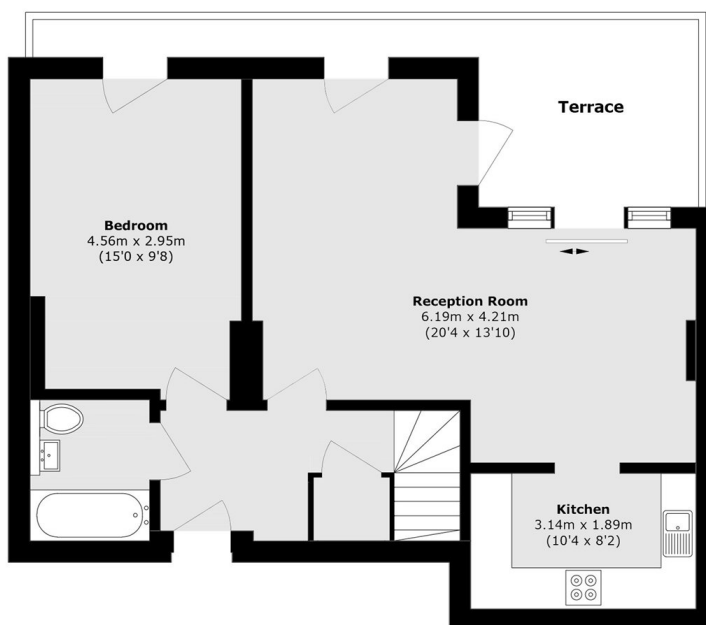
Features

- Three Bedrooms
- Penthouse
- Split Level
- Private Roof Terrace
- On Site Gym and Pool
- On Site Porter
- One Allocated Parking Space

Uxbridge Road, London, W5



Eleventh Floor



Tenth Floor

Total area (approx.): 92.7 sq. m (997.8 sq. ft)
Terrace area (approx.): 11.3 sq. m (121.6 sq. ft)