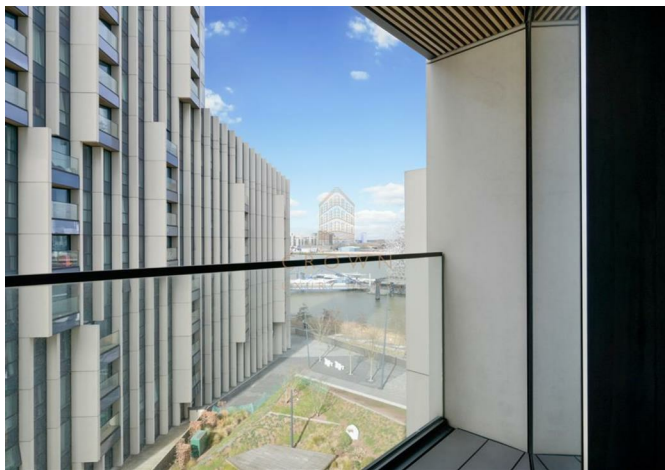




Bldg 5, Flat 504 2 Cutter Lane, London, SE10 0ZT  
**£525,000**



Bldg 5, Flat 504 2 Cutter Lane, London, SE10 0ZT

£525,000

Prefer to communicate in Chinese? Connect with our China Desk on WeChat at CLH-Hannah. An Unparalleled Riverside Sanctuary Awaits at No.5 Upper Riverside. Your Exclusive Invitation to Elevated London Living.



## Description

### The Property

Imagine: Waking to the soft glow of dawn illuminating your expansive, meticulously designed one-bedroom residence. 555 square feet of pure, unadulterated luxury, a testament to the art of modern living. This is not just an apartment; it's a statement.

Picture: Floor-to-ceiling windows framing a breathtaking panorama of the Thames, a living masterpiece that transforms your daily life into an extraordinary experience. The generous reception room, bathed in natural light, is a canvas for your personal style, a space designed for both grand entertaining and intimate moments.

Envision: The plush, 100% wool carpets beneath your feet, leading you to a bedroom where bespoke built-in wardrobes effortlessly blend functionality with elegance. The bathroom, a sanctuary of tranquility, boasts exquisite marble finishes and a luxurious shower-over-bath, a daily indulgence in refined living.

This is your opportunity to transcend ordinary living and embrace the exclusive Upper Riverside lifestyle.

Unlock: The coveted Upper Riverside Club, a private haven of wellness and leisure. Ascend to the 15th-floor infinity pool, where panoramic views stretch as far as the eye can see. Rejuvenate in state-of-the-art gyms, unwind in the tranquil sauna, and bask in the breathtaking beauty of the rooftop terraces.

Experience: A vibrant community within five architecturally stunning towers, cascading towards the river's edge. Step outside and immerse yourself in lush riverfront gardens, charming cafes, and curated retail spaces – an extension of your exquisite lifestyle.

Benefit from: Seamless connectivity to Peninsula Square, with the North Greenwich Underground station (Jubilee Line), the iconic O2, and a vibrant tapestry of restaurants and social hubs at your doorstep.

This is more than a residence; it's an investment in an unparalleled lifestyle.

Don't just dream of luxury; live it. No.5 Upper Riverside is your gateway to an extraordinary London experience, a testament to refined living, exclusively presented by Crown Luxury Homes. Contact us today to schedule your private viewing and secure your place in this exceptional riverside sanctuary.

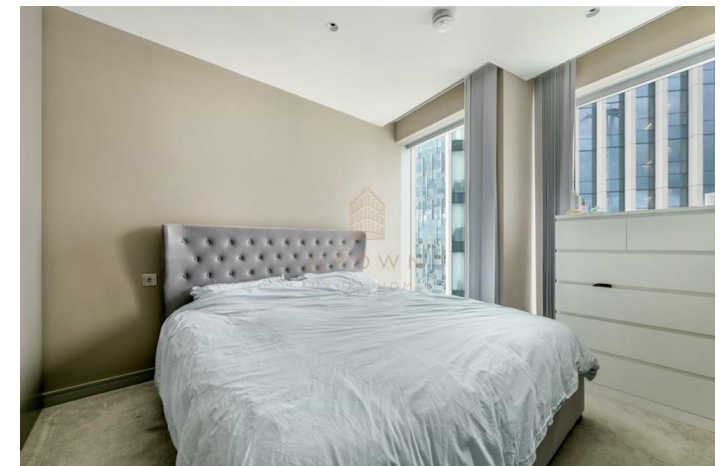
### Additional Information

Heating/Hot Water Provider: TBC

Council: Greenwich, Band E

Service Charge: £4,750 per annum (Billed 6 Monthly) (subject to change)

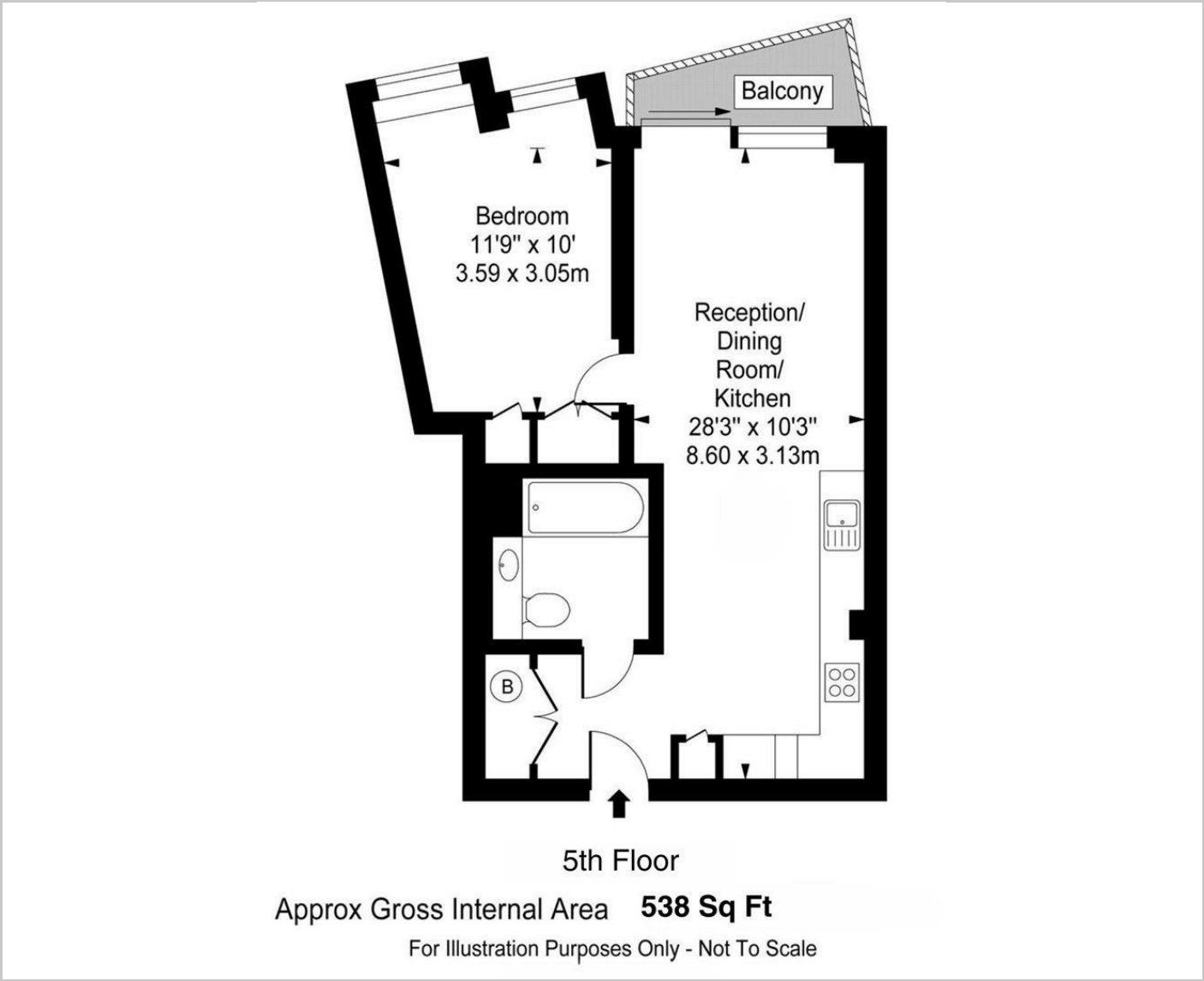
Ground Rent: £564 per annum (subject to change)



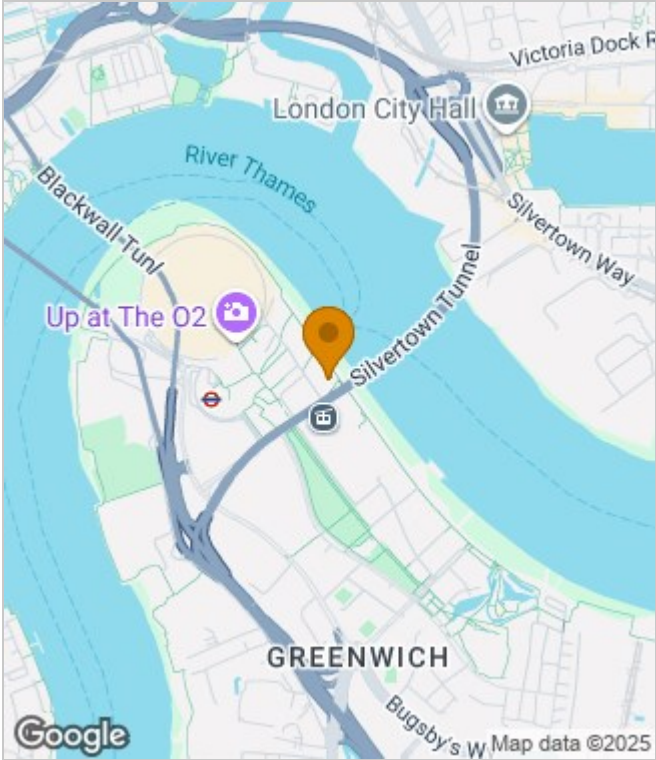
Local Council: Greenwich

Council Tax Band: E

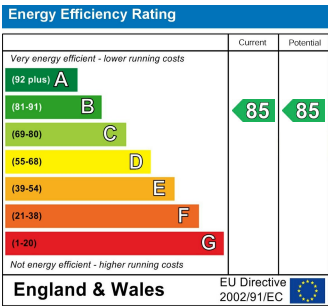
Floor Plans



Area Map



Energy Performance Graph



These particulars, whilst believed to be accurate are set out as a general outline only for guidance and do not constitute any part of an offer or contract. Intending purchasers should not rely on them as statements of representation of fact, but must satisfy themselves by inspection or otherwise as to their accuracy. No person in this firms employment has the authority to make or give any representation or warranty in respect of the property.