



King Charles Walk, SW19

£775,000

 3  1  1  Aw

- End of terrace
- Three bedrooms
- Garage
- Two balconies
- Private garden
- Sought after location

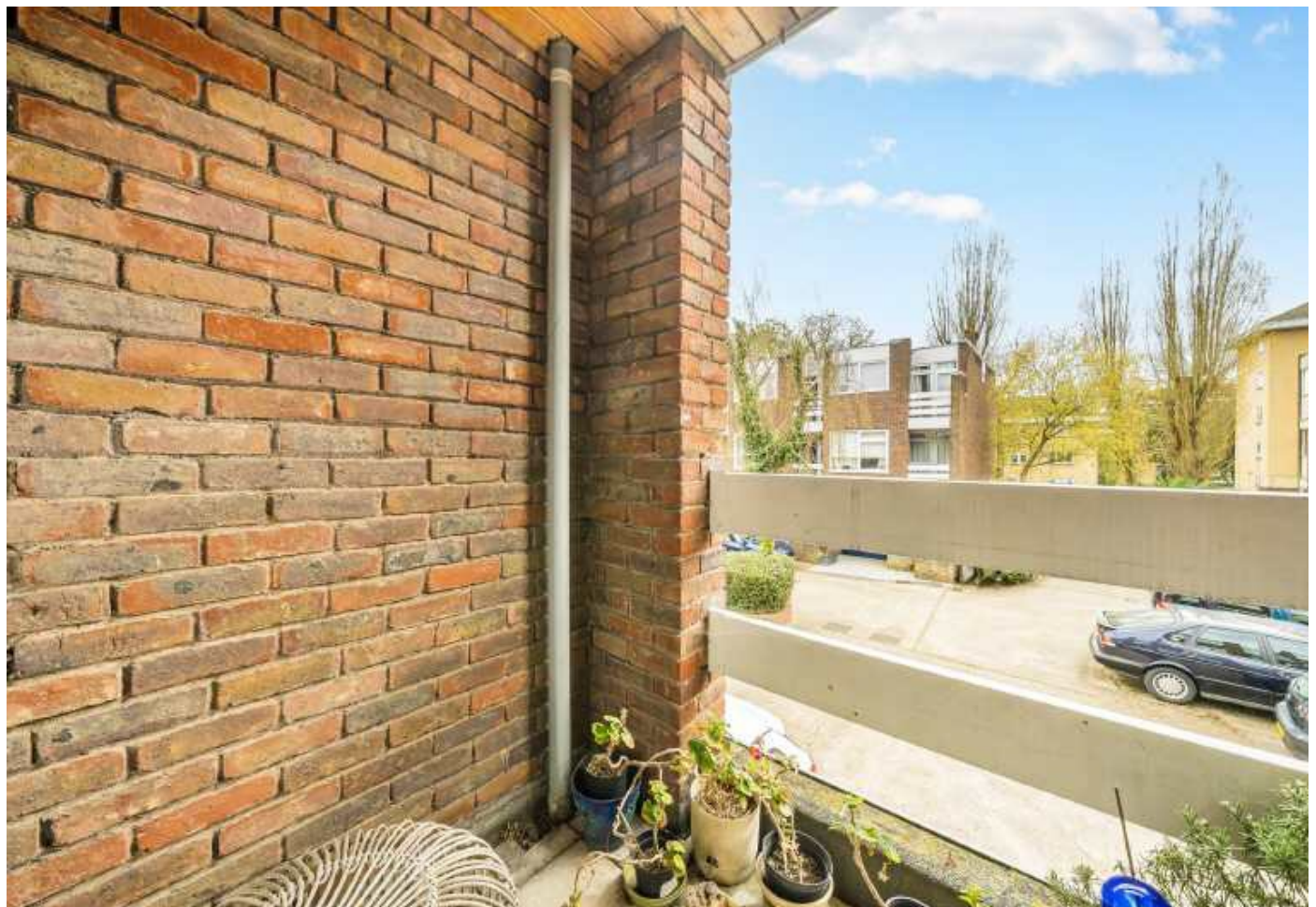


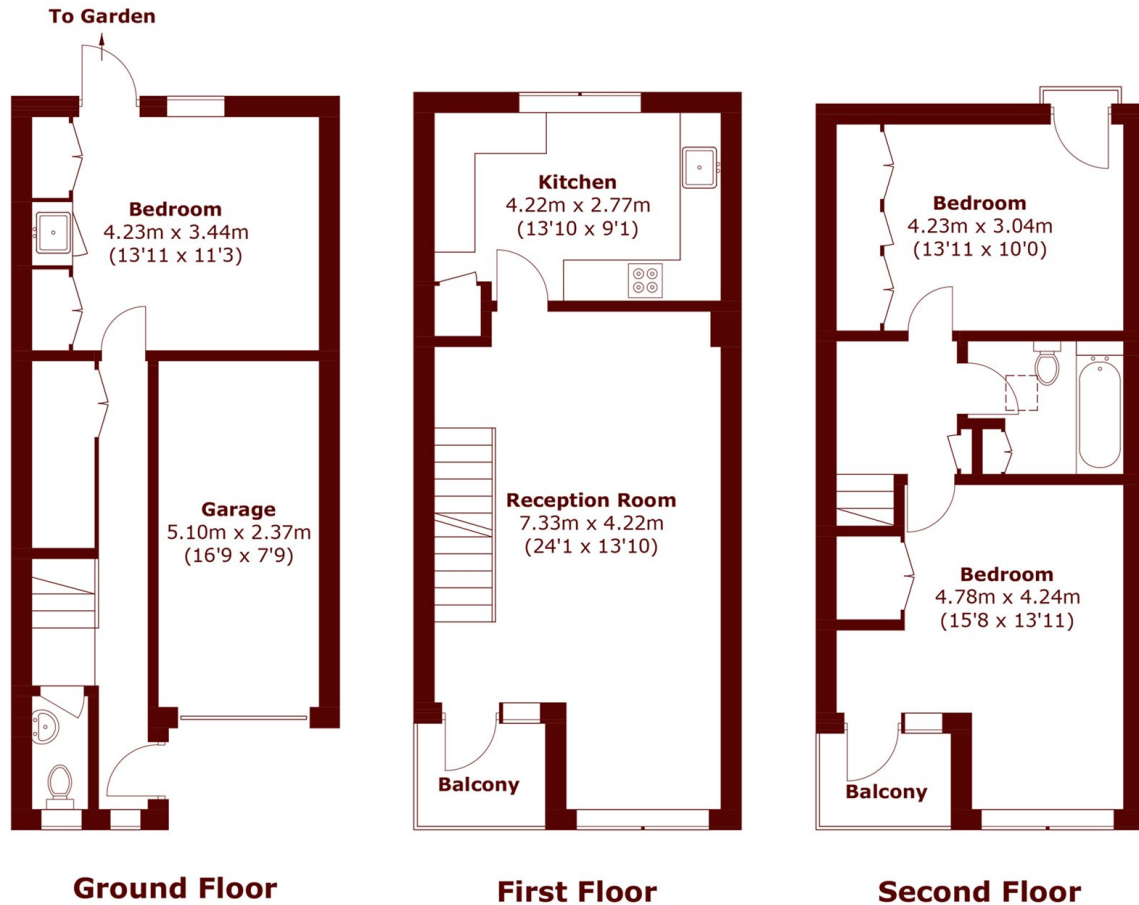


ABOUT THE PROPERTY

Built over three floors with integral garage and two balconies, this end of terrace three bedroom property provides generous and versatile living accommodation. Requiring updating throughout it offers a blank canvas for an incoming buyer to create a wonderful family home in an extremely convenient location

King Charles Walk is perfectly placed for Southfields town centre for its array of independent shops, restaurants and the District line underground station. The open spaces of Wimbledon Park and Common are close at hand.





Total area (approx.): 106.7 sq. m (1,148.5 sq. ft)
Garage: 12.1 sq. m (130.2 sq. ft)
Total: 118.8 sq. m (1,278.7 sq. ft)
Balcony: 5.5 sq. m (59.2 sq. ft)

Marsh & Parsons Wimbledon

24 High Street, Wimbledon
Village, SW19 5DX
020 8879 6660